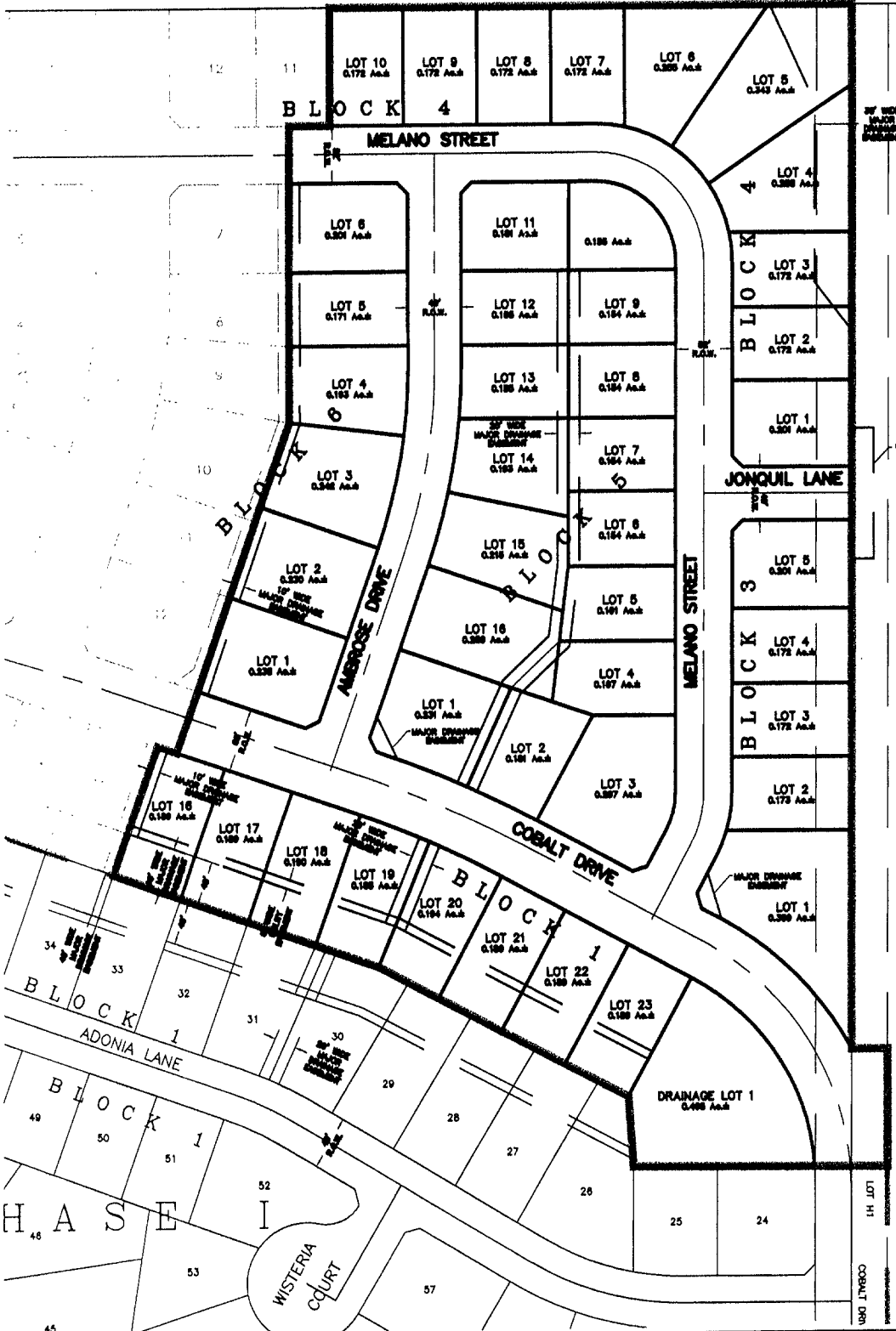


LOTS 16-23 BLOCK 1, LOTS 1-5 BLOCK 3, LOTS 1-10 BLOCK 4, LOTS 1-16 BLOCK 5, LOTS 1-6 BLOCK 6, AND DRAINAGE LOT 1 BROOKFIELD SUBDIVISION

LOCATED IN THE NE $\frac{1}{4}$ SE $\frac{1}{4}$ OF SECTION 13 T2N, R7E, BHM
RAPID CITY, PENNINGTON COUNTY, SOUTH DAKOTA

SW $\frac{1}{4}$ NE $\frac{1}{4}$

SECTION 13
SECTION 18



20' WIDE
MAJOR
DRAINAGE
DITCH

20'x100' TEMPORARY
CONSTRUCTION DRAINAGE



NOT TO SCALE
SEPTEMBER 13, 2006

SLETTEN ADD.

TRACT 5

RECEIVED

SEP 18 2006

Rapid City Growth
Management Department