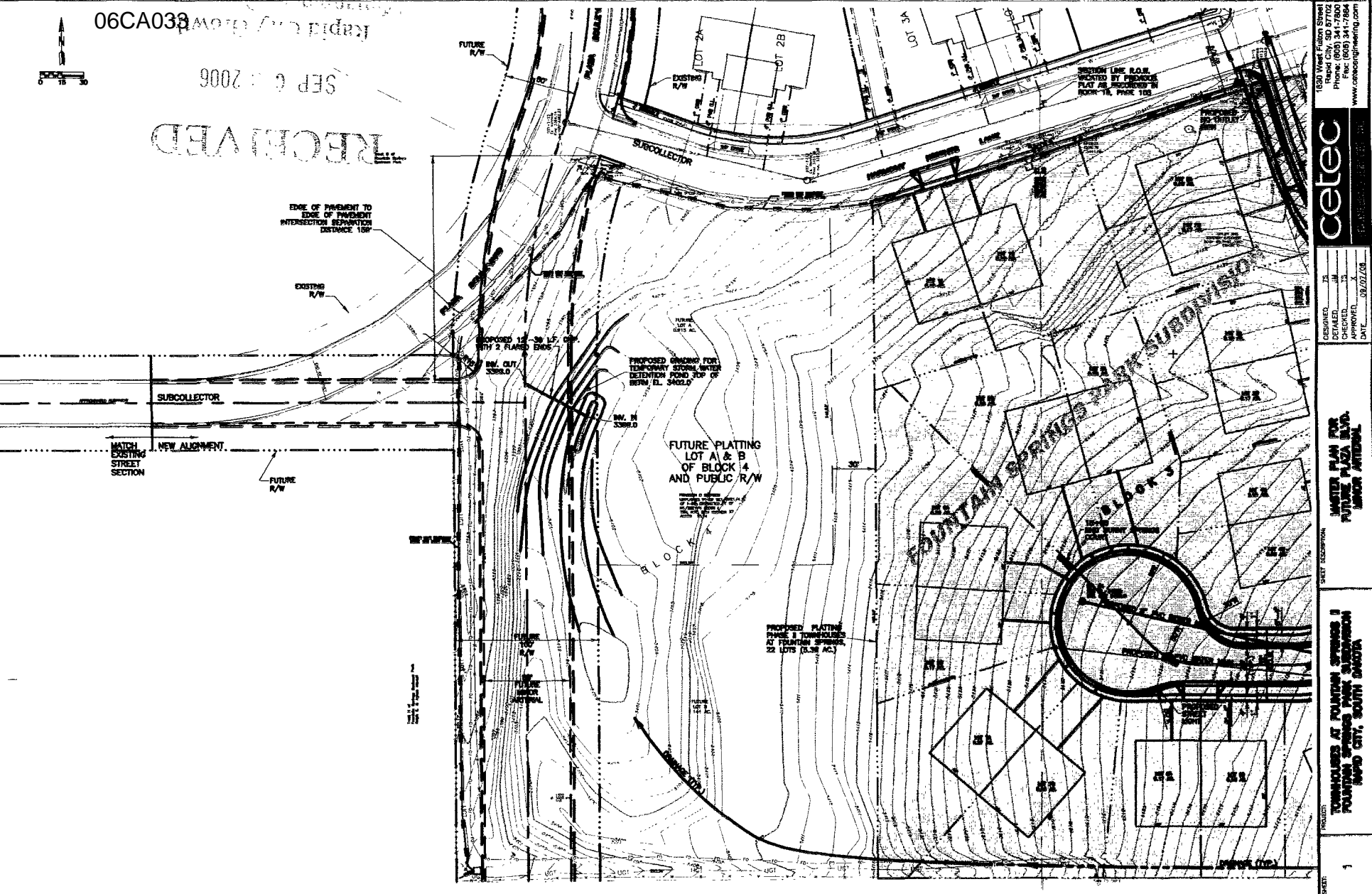




SEP 6 2006

REVISIONS



EDGE OF PAVEMENT TO EDGE OF PAVEMENT INTERSECTION SEPARATION DISTANCE 150'

EXISTING R/W

SUBCOLLECTOR

MATCH EXISTING STREET SECTION

NEW ALIGNMENT

FUTURE R/W

SUBCOLLECTOR

FUTURE PLATTING LOT A & B OF BLOCK 4 AND PUBLIC R/W

PROPOSED PLATTING PHASE I TOWNHOUSES AT TOWNHOMES PARK SUBDIVISION 24 LOTS (8.38 AC.)

PROPOSED GRADING FOR TOWNHOMES PARK SUBDIVISION DETENTION POND OF BERM EL. 3402.0

PROPOSED 12' W/ 2 FLARED ENDS

R/W CUT 3388.0

R/W IN 3388.0

1930 West Fulton Street
Rapid City, SD 57102
Phone: (605) 341-7864
Fax: (605) 341-7864
www.cetecengineering.com

cetec

DESIGNED	JS
DRAWN	JM
CHECKED	JS
APPROVED	X
DATE	09/21/06

MASTER PLAN FOR
FUTURE PLAZA BLVD.
UNION AVENUE

TOWNHOUSES AT FOUNTAIN SPRINGS II
FOUNTAIN SPRINGS PARK SUBDIVISION
RAPID CITY, SOUTH DAKOTA