

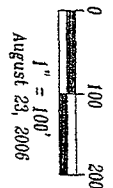
Plat of Lots 1 through 8 of Elysian Heights Subdivision and Dedicated Right-of-Way
 located in the N1/2 SW1/4 of Section 21, T1N, R7E, BHM,
 Rapid City, Pennington County, South Dakota

Prepared by:
 Risk Land Surveying & Consulting Engineers, Inc.
 P.O. Box 8164
 Rapid City, SD 57709
 (605) 438-1298
 Project No. 06-10-02

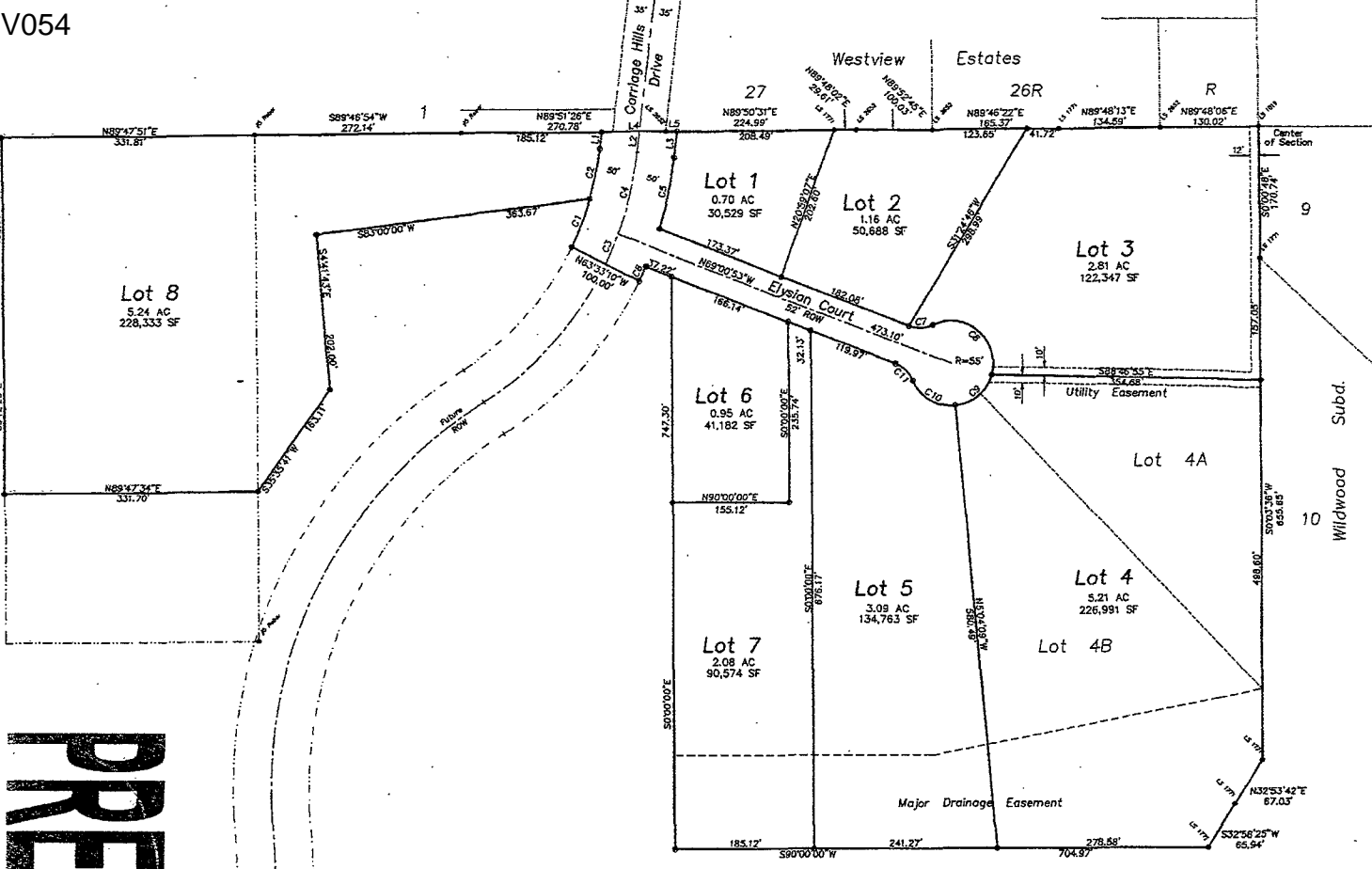
g Utility and Minor Drainage Easements on the interior sides of all lot lines except along the Subdivision and 2 of both Subdivision

All Major Drainage Easements Shown Herein Shall Be Keep Free Of All Obstructions, Including But Not Limited To Buildings, Walks, Fences, etc. and All Other Structures. The Right To Construct, Operate, Maintain, Repair, And Repair Such Improvements and Structures As It Deems Expedient To Facilitate Drainage From Any Section.

Carriage Hills Drive and Elysian Court, containing 1.07 acre more or less, as shown hereon, are hereby dedicated as public right-of-ways; however, such dedication shall not be construed to mean a donation of the fee of said land.



● = Found Survey Monument marked as noted
 ⊙ = Set Rebar with cap marked RW File 0505



NUM	DELTA	ARC	RADIUS	BEARING	DISTANCE
C1	3°44'59"	66.75'	332.26'	N21°34'20"E	66.67'
C2	5°44'59"	66.75'	392.26'	N11°49'21"E	66.67'
C3	5°27'43"	42.16'	442.26'	N23°42'58"E	42.15'
C4	14°02'15"	108.35'	442.26'	N13°57'59"E	108.08'
C5	11°00'35"	94.59'	492.26'	N12°27'09"E	94.43'
C6	2°28'04"	20.92'	492.26'	N25°13'48"E	20.91'
C7	45°59'37"	32.11'	40.00'	N87°59'18"E	31.25'
C8	131°06'56"	125.86'	55.00'	N49°27'02"W	100.14'
C9	68°48'23"	65.07'	55.00'	N50°31'09"E	82.16'
C10	72°02'53"	69.16'	55.00'	S39°02'43"E	64.69'
C11	45°59'37"	32.11'	40.00'	N46°01'05"W	31.25'

NUM	BEARING	DISTANCE
L1	N6°56'51"E	22.08'
L2	N6°56'51"E	28.30'
L3	N6°56'51"E	34.52'
L4	N89°51'26"E	85.63'
L5	N89°50'31"E	16.11'

PRELIMINARY

1/4 Section Line