

Plat of Lots 1 through 8 of Elysian Heights Subdivision and Dedicated Right-of-Way

located in the N1/2 SW1/4 of Section 21, T1N, R7E, BHM, Rapid City, Pennington County, South Dakota

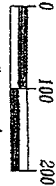
Prepared by:
 Pfister Land Surveying & Consulting Engineers, Inc.
 P.O. Box 8164
 Rapid City, SD 57709
 (605) 348-1858
 Project No. 06-10-02

Utility and Minor Drainage Easements on the interior sides of all lot lines 1 and 2 of Dava Subdivision

All Right-of-Way Easements Shown Herein Shall Be Keep Free Of All Obstructions, Including But Not Limited to Buildings, Walls, Fences, Hedges, Trees and Shrubs, and Other Easements

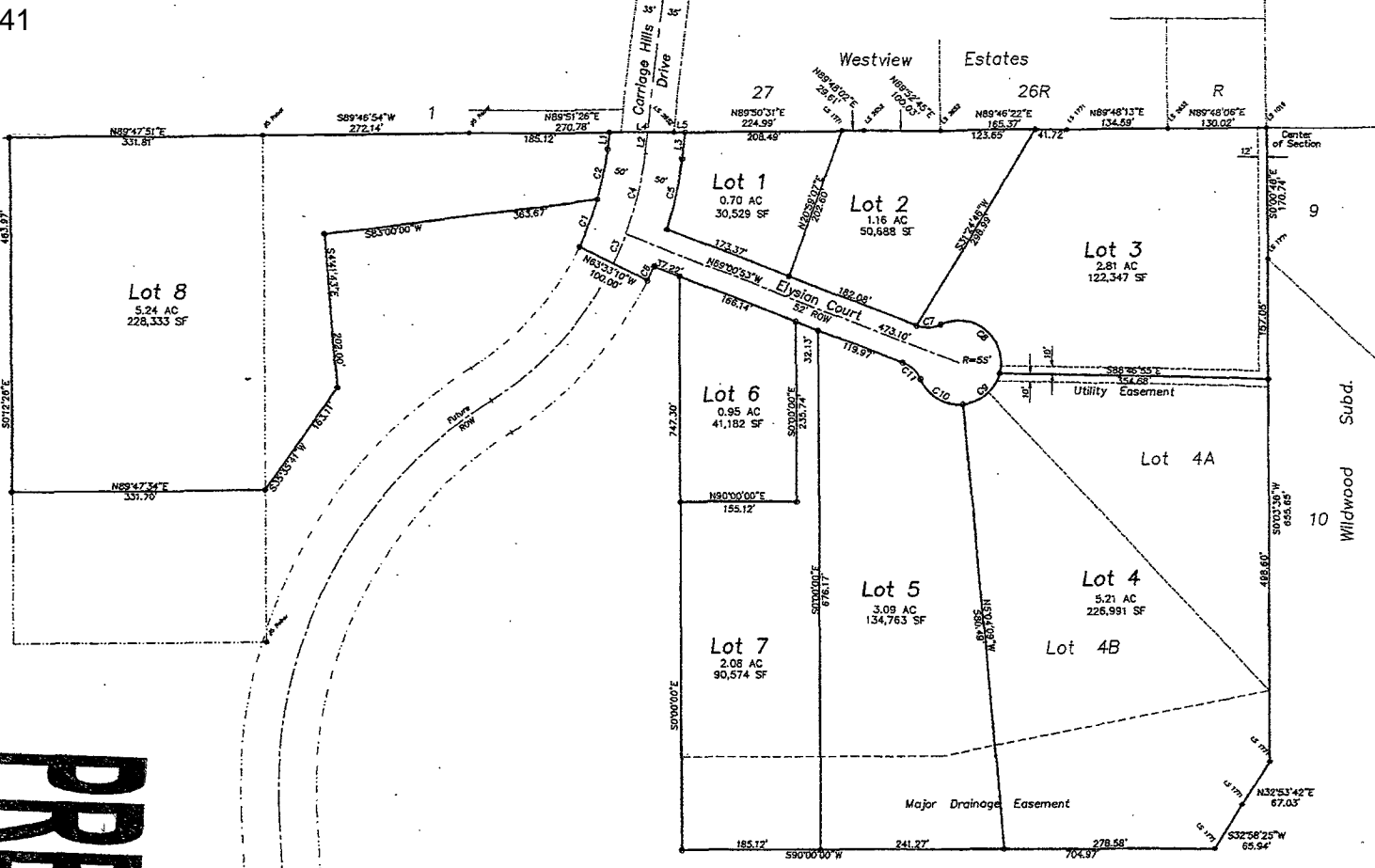
Carriage Hills Drive and Elysian Court, containing 1.07 Acres more or less, as shown herein are hereby dedicated as public right-of-way, however, no dedication of the fee of said land.

Found Survey Monument, marked as noted
 Set Rebar with cap marked "NW Fish 6395"



NUM	DELTA	ARC	RADIUS	BEARING	DISTANCE
C1	9°44'59"	66.75'	392.26'	N21°34'20"E	66.67'
C2	9°44'59"	66.75'	392.26'	N11°49'21"E	66.67'
C3	5°27'43"	42.16'	442.26'	N23°42'38"E	42.13'
C4	14°02'15"	108.35'	442.26'	N1°32'25"E	108.08'
C5	11°00'36"	84.59'	492.26'	N12°27'09"E	84.45'
C6	2°26'04"	20.92'	492.26'	N25°13'48"E	20.91'
C7	45°59'37"	32.11'	40.00'	N87°59'18"E	31.25'
C8	15°06'56"	125.98'	55.00'	N49°27'02"W	100.14'
C9	66°49'23"	46.07'	55.00'	N85°31'09"E	62.76'
C10	72°02'23"	69.16'	55.00'	S58°02'43"E	64.69'
C11	45°59'37"	32.11'	40.00'	N46°01'05"W	31.25'

NUM	BEARING	DISTANCE
L1	N6°56'51"E	22.08'
L2	N6°56'51"E	28.30'
L3	N6°56'51"E	34.52'
L4	N89°51'26"E	85.66'
L5	N89°50'31"E	15.11'



PRELIMINARY