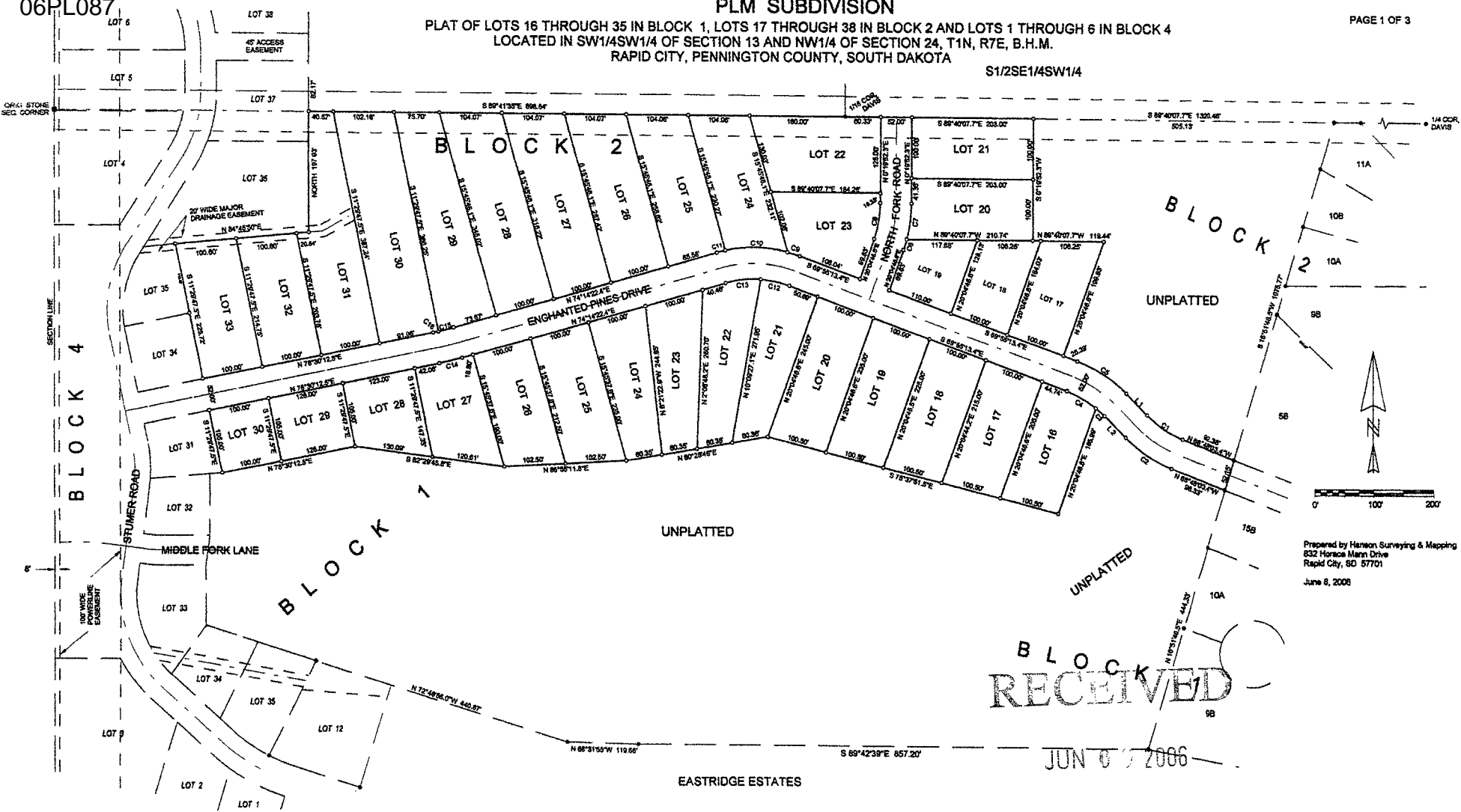


PLAT OF LOTS 16 THROUGH 35 IN BLOCK 1, LOTS 17 THROUGH 38 IN BLOCK 2 AND LOTS 1 THROUGH 6 IN BLOCK 4  
LOCATED IN SW1/4SW1/4 OF SECTION 13 AND NW1/4 OF SECTION 24, T1N, R7E, B.H.M.  
RAPID CITY, PENNINGTON COUNTY, SOUTH DAKOTA

S1/2SE1/4SW1/4



Prepared by Hanson Surveying & Mapping  
832 Horace Mann Drive  
Rapid City, SD 57701  
June 8, 2006

RECEIVED

JUN 07 2006

EASTRIDGE ESTATES