



YOUTH & FAMILY  
SERVICES

August 22, 2006

Vicki Fisher, Planner III  
Growth Management Department  
City of Rapid City  
300 Sixth Street  
Rapid City, SD 57701

Re: File #06VR007

Dear Vicki:

Youth & Family Services has serious concerns about the vacation of the section line (marked in blue on the attached map) for the following reasons:

- 1) Vacation of the section highway line removes the best access to the 20 acres owned by YFS.
- 2) There is currently no dedicated access to our property.
- 3) The section highway line provides the best and most direct access to 5<sup>th</sup> Street from our acreage.

The alternate road (marked in green on the attached map) would meet our needs if it provides access from 5<sup>th</sup> Street. If the Rapid City Planning Commission and the City Council vote to vacate the section highway line, we request that the plan for this alternate access from 5<sup>th</sup> Street be made a part of the record.

We appreciate your assistance and your attention to this matter. Please share our concerns and request with the Planning Commission and the City Council.

Sincerely,

Susan Fedell  
Executive Director

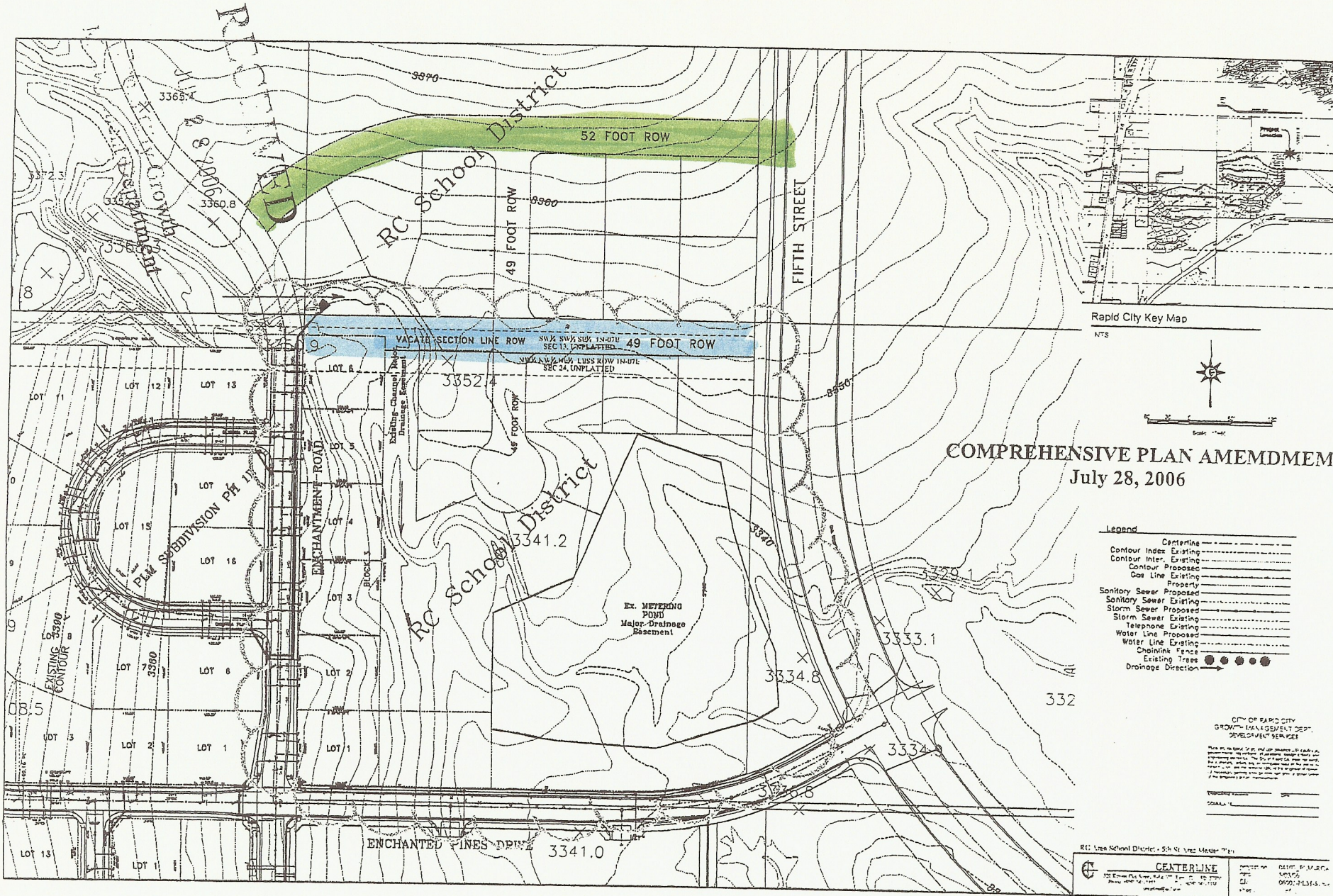
Cc: Malcom Chapman, City Council

Services for youth & their families include:

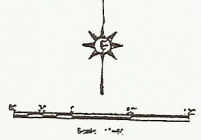
Counseling • Crisis Intervention • Child Care • Education • Girls Incorporated • Head Start • Nutrition & Health • Parenting Programs • Prevention Programs • Recreation

1920 Plaza Boulevard • PO Box 2813 • Rapid City, SD 57709 • (605) 342-4195 • FAX: (605) 342-0693

"A United Way Agency"



Rapid City Key Map  
NTS



### COMPREHENSIVE PLAN AMEMDMEM July 28, 2006

- Legend**
- Centerline
  - Contour Inter. Existing
  - Contour Inter. Proposed
  - Contour Proposed
  - Gas Line Existing
  - Property
  - Sanitary Sewer Proposed
  - Sanitary Sewer Existing
  - Storm Sewer Proposed
  - Storm Sewer Existing
  - Telephone Existing
  - Water Line Proposed
  - Water Line Existing
  - Chainlink Fence
  - Existing Trees
  - Drainage Direction

CITY OF RAPID CITY  
GROWTH MANAGEMENT DEPT.  
DEVELOPMENT SERVICES

This plan is the property of the City of Rapid City and is loaned to you for your use only. It is not to be used for any other purpose without the written consent of the City of Rapid City. The City of Rapid City is not responsible for any errors or omissions in this plan. The user of this plan is advised that it is not a contract and that it is subject to change without notice.

DATE: 7/28/06  
SCALE: 1" = 40'

RC: Lee School District - 52' x 49' Meter Pkgs

	<b>CENTERLINE</b>	DATE: 7/28/06	DESIGNER: M. J. ...
		SCALE: 1" = 40'	CITY OF RAPID CITY