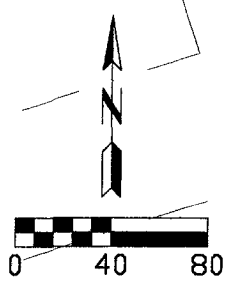
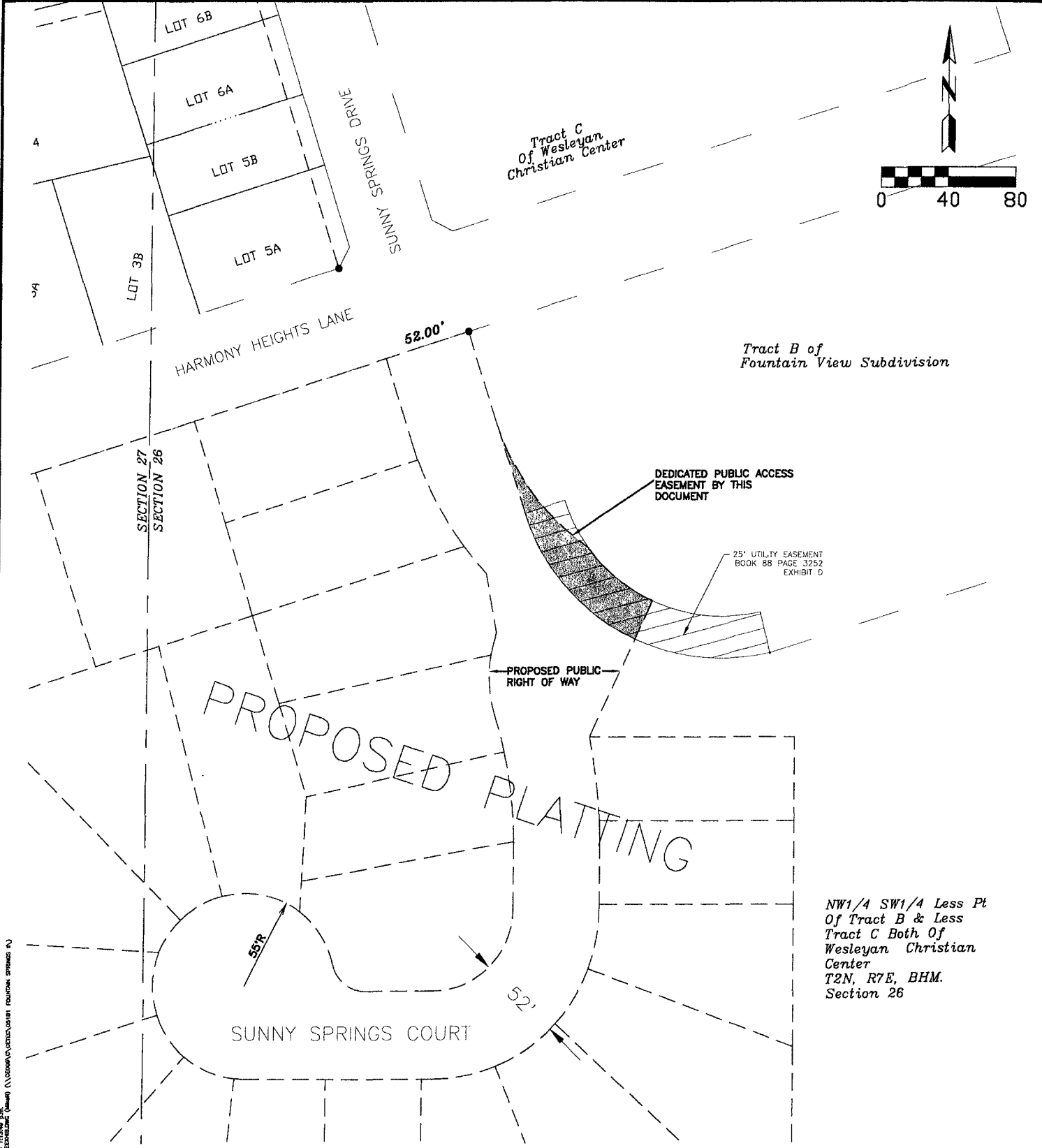


# EXHIBIT A

## DEDICATION OF PUBLIC ACCESS EASEMENT TRACT B OF FOUNTAIN VIEW SUBDIVISION IN THE W1/2, NW1/4 SW1/4 SECTION 26, T2N, R7E, B.H.M. RAPID CITY, PENNINGTON COUNTY, S.D.



NW1/4 SW1/4 Less Pt  
Of Tract B & Less  
Tract C Both Of  
Wesleyan Christian  
Center  
T2N, R7E, BHM.  
Section 26

Date: 11/20/04 11:30 AM  
 Drawing: 06SV050.dwg  
 User: \s06sv050\user\jstewart  
 Plot: 06SV050.dwg

