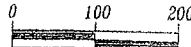


Plat of Elk Meadows Subdivision - including 06AN003



1" = 100'
 June 7, 2006
 Basis of Bearings
 Assumed from Previous Surveys
 and confirmed by
 Solar Observation

All major drainage easements shown herein shall be kept free of all obstructions including, but not limited to buildings, wells, fences, hedges, trees & shrubs. These easements grant to all public authorities the right to construct, operate maintain, inspect, and repair such improvements and structures as it deems expedient to facilitate drainage from any source

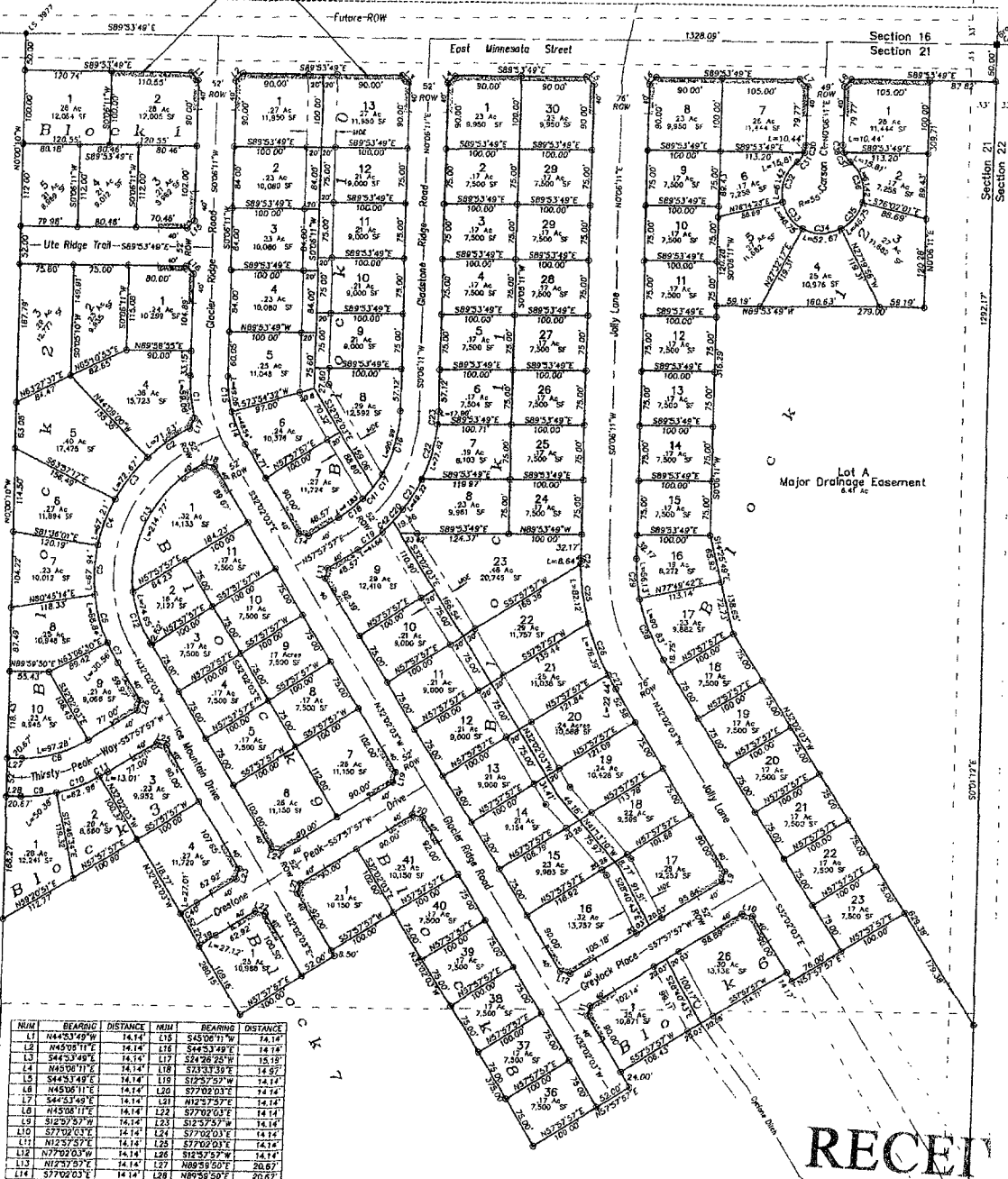
NOTE: The rear lot lines in Block 10 and portions of Block 11 represent the centerline of a 40' wide Major Drainage Easement (aka Cyclone Ditch). The side lot line annotations are to the Witness Corners located at the edge of the easement

located in the E1/2 NE1/4 of Section 21
 T1N, R8E, BHM, Rapid City, Pennington County, South Dakota

Prepared by:
 Flisk Land Surveying & Consulting Engineers, Inc.
 P.O. Box 6164
 Rapid City, SD 57709
 (605) 348-1638
 Project # 06-05-07

- Utility and Minor Drainage Easements
 the interior sides of all lot lines
- Legend
- = Found Survey Monument as noted
 - = Found Brass Cap (BLM - 1949)
 - = Set Rebar/Cap "RW FISK LS 6565"
 - = Major Drainage Easement

East Minnesota Street (S1/2), Glacier Ridge Road, Gladstone Ridge Road, Jolly Lane, Carson Court, Ice Mountain Drive, Ute Ridge Trail, Thirsty Peak Way, Crestone Peak Drive and Greylock Place, containing 2.19 Acres more or less, as shown hereon are hereby dedicated as public right-of-ways, however, such dedication shall not be construed to mean a donation of the fee of said land.



NUM	BEARING	DISTANCE	NUM	BEARING	DISTANCE
L1	N44°53'49"W	14.14	C15	S45°06'11"W	14.18
L2	N45°07'47"W	14.14	C16	S45°06'11"W	14.18
L3	S44°53'49"E	14.14	L17	S34°28'57"E	14.18
L4	N45°06'11"E	14.14	L18	S43°33'39"E	14.87
L5	S44°53'49"E	14.14	L19	S12°57'57"W	14.14
L6	N45°06'11"E	14.14	L20	S77°02'03"E	14.14
L7	S44°53'49"E	14.14	L21	N12°57'57"E	14.14
L8	N45°06'11"E	14.14	L22	S77°02'03"E	14.14
L9	S12°57'57"W	14.14	L23	S12°57'57"W	14.14
L10	S77°02'03"E	14.14	L24	S77°02'03"E	14.14
L11	N12°57'57"E	14.14	L25	S77°02'03"E	14.14
L12	N77°02'03"W	14.14	L26	S12°57'57"W	14.14
L13	N12°57'57"E	14.14	L27	N89°58'50"E	20.67
L14	S77°02'03"E	14.14	L28	N89°58'50"E	20.67

NUM	DELTA	ARC	RADIUS	BEARING	DISTANCE	NUM	DELTA	ARC	RADIUS	BEARING	DISTANCE
C1	14°38'11"	39.66	226.00	S72°30'07"E	58.89	C22	16°43'42"	77.82	226.00	N14°30'22"E	77.43
C2	18°03'14"	71.23	226.00	S5°45'47"W	70.96	C23	13°32'20"	61.32	226.00	N14°30'22"E	77.43
C3	18°23'21"	71.67	226.00	S36°38'18"W	72.35	C24	17°23'35"	86.4	338.00	S03°37'47"E	8.84
C4	17°02'17"	67.21	226.00	S18°54'30"W	66.88	C25	17°35'12"	82.12	338.00	S18°19'27"E	81.37
C5	17°13'07"	67.84	226.00	S7°44'39"W	67.69	C26	12°58'54"	63.69	338.00	S12°05'23"E	76.27
C6	17°27'07"	68.84	226.00	S13°33'42"E	68.57	C27	9°48'13"	26.44	338.00	S30°07'57"E	26.27
C7	7°44'47"	35.56	226.00	S28°09'40"E	30.53	C28	18°51'45"	90.83	262.00	S22°06'11"E	80.37
C8	32°01'53"	97.26	174.00	N73°58'53"E	98.07	C29	12°16'28"	56.13	262.00	S6°02'04"E	58.07

RECEIVED
 JUN 09 2006