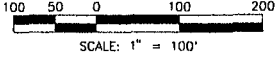


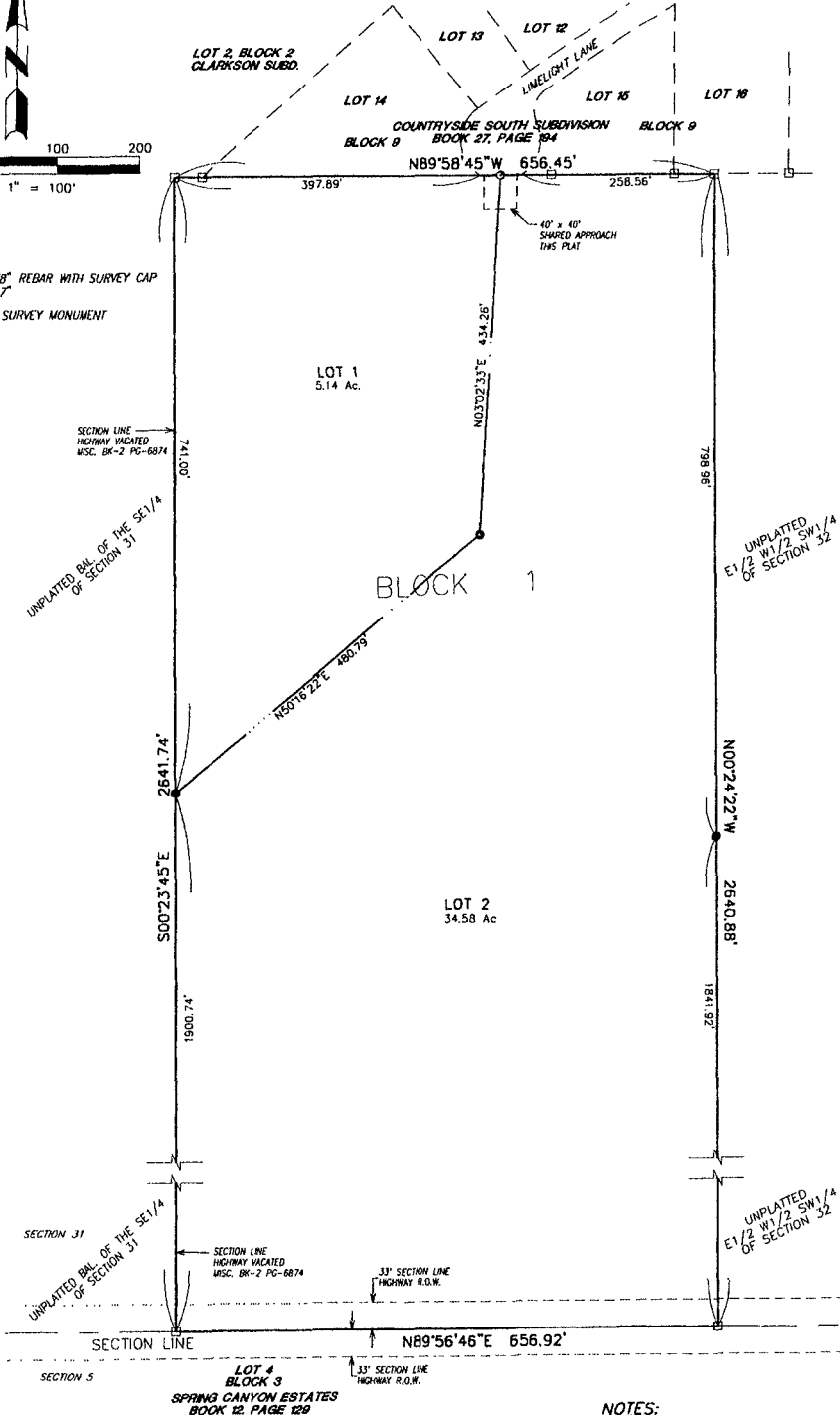
06PL106

BUEHNER SUBDIVISION
LOTS 1 AND 2, BLOCK 1
LOCATED IN THE W1/2 W1/2 SW1/4 OF SECTION 32
T1N, R7E, B.H.M.,
PENNINGTON COUNTY, SOUTH DAKOTA



LEGEND

- DENOTES SET 5/8" REBAR WITH SURVEY CAP MARKED "RLS.3977"
- DENOTES FOUND SURVEY MONUMENT



NOTES: