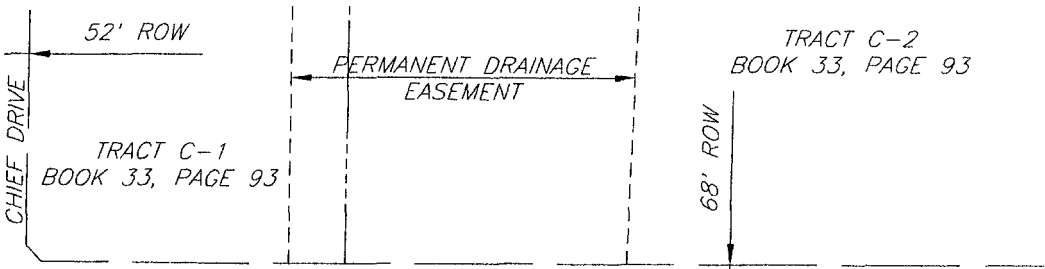
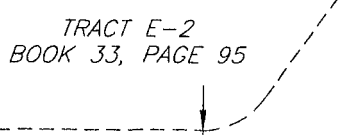


06PL091

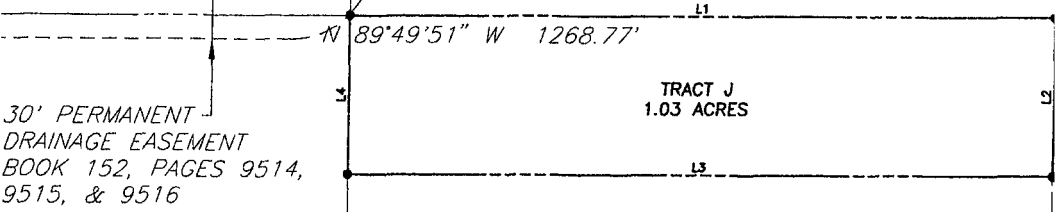
PLAT OF McMAHON SUBDIVISION  
TRACT J OF McMAHON SUBDIVISION  
LOCATED BY THE  
NE ¼ SW ¼ OF  
SECTION 24, T2N, R7E, BHM  
RAPID CITY, PENNINGTON COUNTY, SOUTH DAKOTA



KATHRYN AVENUE



TRACT E-3  
BOOK 33, PAGE 95



UNPLATTED PORTION OF  
THE NE ¼ SW ¼ SECTION 24

NUMBER	DIRECTION	DISTANCE
L1	S 89°49'51" E	448.00'
L2	S 00°10'09" W	100.00'
L3	S 89°49'51" E	448.00'
L4	S 00°10'09" W	100.00'

RECEIVED

JUN 01 2006