

Plat of Elk Meadows Subdivision - including

06PL090



0 100 200

1" = 100'

June 7, 2006

Basis of Bearings

Assumed from Previous Surveys

and confirmed by

Solar Observation

All major drainage easements shown herein shall be kept free of obstructions including but not limited to buildings walls, fences, hedges, trees & shrubs. These easements grant to all public authorities the right to construct, operate, maintain, inspect, and repair such improvements and structures as it deems expedient to facilitate drainage from any source.

NOTE: The rear lot lines in Block 10 and portions of Block 11 represent the centerline of a 40' wide Major Drainage Easement (aka Cyclopedia Ditch). The side lot line annotations are to the Witness Corners located at the edge of the easement.

located in the E1/2 NE1/4 of Section 21
T1N, R8E, BHM, Rapid City, Pennington County, South Dakota

Prepared by:
Fisk Land Surveying & Consulting Engineers, Inc.
P.O. Box 8104
Rapid City, SD 57709
(605) 348-1538
Project # 06-05-07

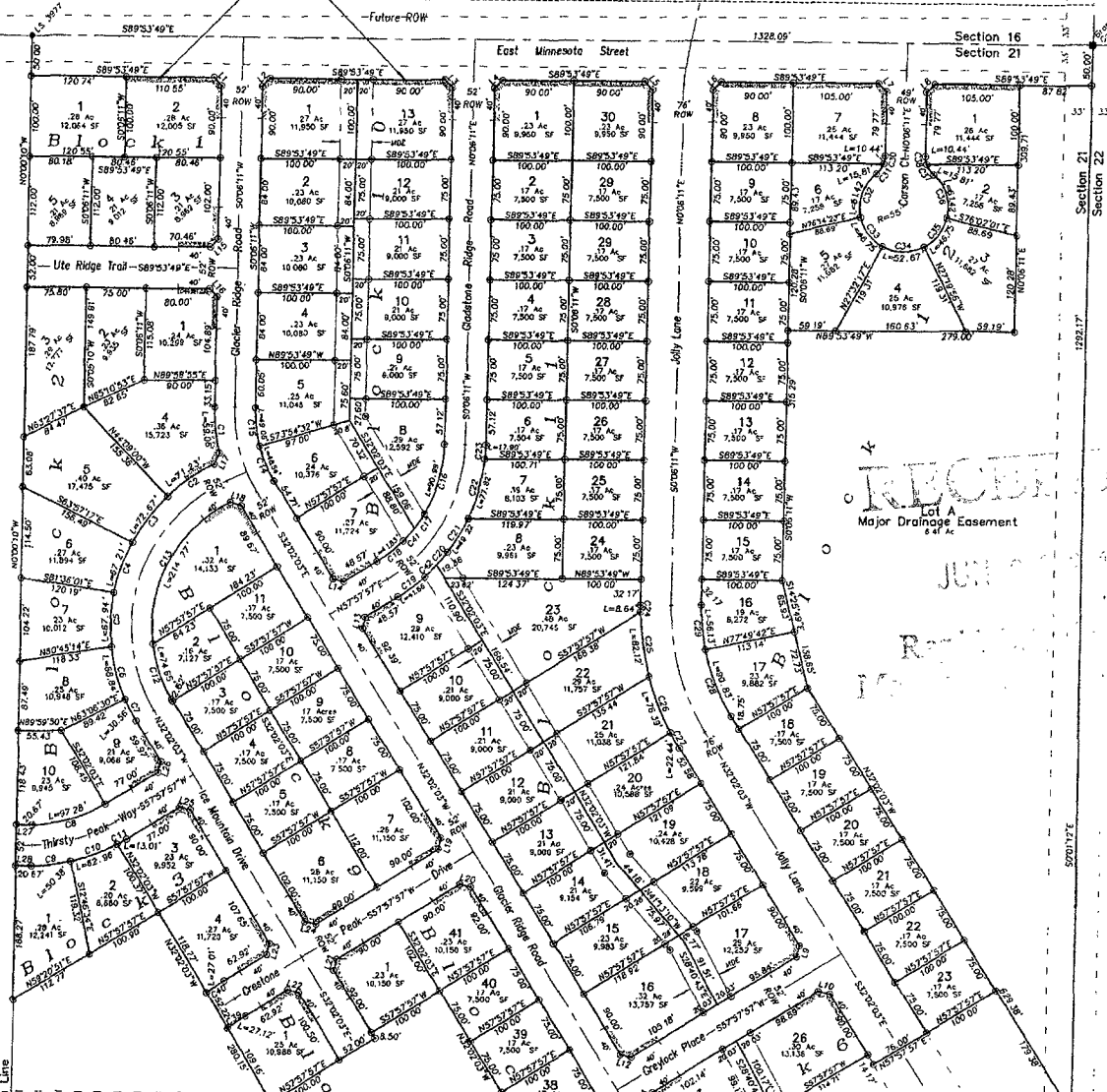
Utility and Minor Drainage Easements on the interior sides of all lot lines

- Legend
- = Found Survey Monument as noted
 - = Found Brass Cap (BLM - 1949)
 - = Set Rebar/Cap "RW FISK LS 6565"
 - = Major Drainage Easement

Access Restriction
(See hatching at each intersection)

-Future-ROW-

East Minnesota Street (S1/2), Glacier Ridge Road, Gladstone Ridge Road, Jolly Lane, Carson Court, Ice Mountain Drive, Ute Ridge Trail, Thirsty Peak Way, Crestone Peak Drive and Greylock Place, containing 9.09 Acres more or less, as shown hereon are hereby dedicated as public right-of-ways, however, such dedication shall not be construed to mean a donation of the fee of said land.



RECORD
Lot A
Major Drainage Easement
9.09 Ac

1/16 Section Line

NUM	BEARING	DISTANCE	NUM	BEARING	DISTANCE
L1	N44°34'49"W	14.14	L15	S45°08'11"E	14.14
L2	N45°06'11"E	14.14	L16	S44°39'49"E	14.14
L3	S44°34'49"E	14.14	L17	S72°20'03"E	14.14
L4	N45°06'11"E	14.14	L18	S73°33'58"E	14.97
L5	S44°34'49"E	14.14	L19	S72°57'57"W	14.14
L6	N45°06'11"E	14.14	L20	S72°02'03"E	14.14
L7	S44°34'49"E	14.14	L21	N12°24'24"E	14.14
L8	N45°06'11"E	14.14	L22	S77°02'03"E	14.14
L9	S42°57'57"W	14.14	L23	S72°57'57"W	14.14
L10	S77°02'03"E	14.14	L24	S72°20'03"E	14.14
L11	N12°24'24"E	14.14	L25	S77°02'03"E	14.14
L12	N77°02'03"E	14.14	L26	S18°57'57"W	14.14