

372 III SW
-OLA DAM)

06PL069

RECEIVED

UNITED STATES
DEPARTMENT OF THE INTERIOR
GEOLOGICAL SURVEY

1956
Growth
Management Department

103°22'30"
44°00'

631000m.E.

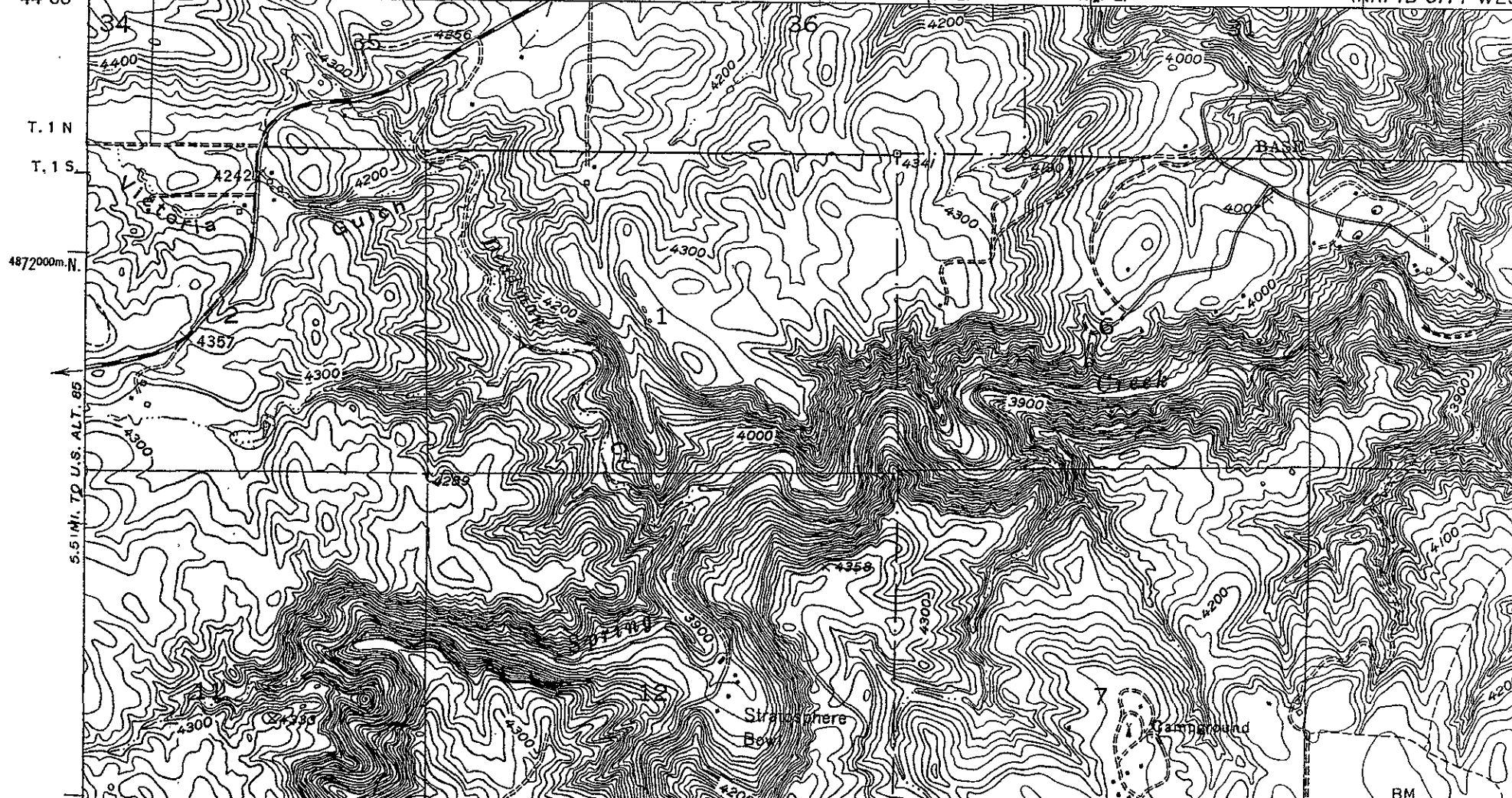
RAPID CITY (CH) 11 MI.

633

R. 6 E. 20'

R. 7 E.

5372 III SE
(RAPID CITY WES)



T. 1 N
T. 1 S

4872000m.N.

S. 51 MI. TO U.S. ALT. 65

BM