

06VE016

EXHIBIT A

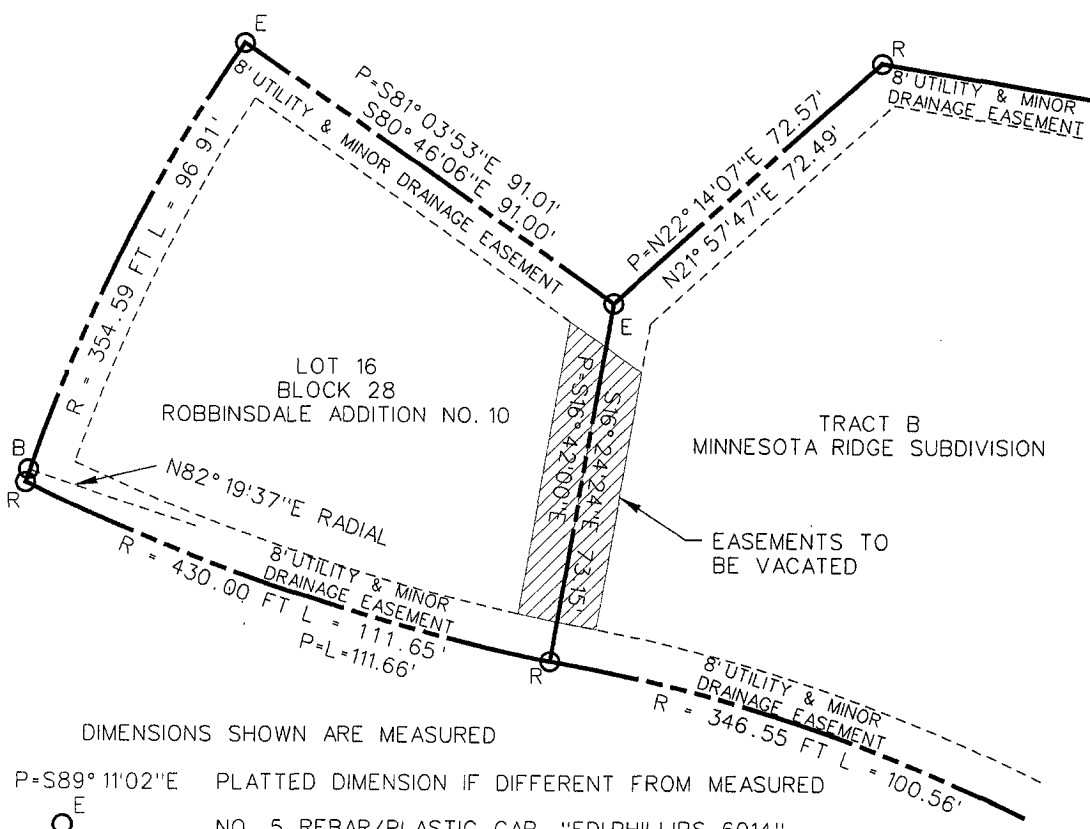
UTILITY & MINOR DRAINAGE EASEMENT VACATION

LOT 16 IN BLOCK 28 OF ROBBINSDALE ADDITION NO. 10 RAPID CITY, PENNINGTON COUNTY, SOUTH DAKOTA, AS SHOWN ON THE PLAT FILED IN PLAT BOOK 30, PAGE 63 IN THE PENNINGTON COUNTY RECORDS, LOCATED IN THE NE1/4 OF THE SW1/4 OF SECTION 13, T1N, R7E, B.H.M.

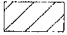
AND

TRACT B MINNESOTA RIDGE SUBDIVISION, AS SHOWN ON THE PLAT FILED IN PLAT BOOK 30 PAGE 72 IN THE PENNINGTON COUNTY RECORDS, LOCATED IN THE S1/2 OF SECTION 13, T1N, R7E, B.H.M.

OWNER: PRESBYTERIAN RETIREMENT VILLAGE OF RAPID CITY, INC.



DIMENSIONS SHOWN ARE MEASURED

- P=S89° 11'02"E PLATTED DIMENSION IF DIFFERENT FROM MEASURED
- <sup>E</sup> NO. 5 REBAR/PLASTIC CAP, "EDIPHILLIPS 6014"
- <sup>R</sup> NO. 5 REBAR, "RENNER AND SPERLICK 2652"
- <sup>B</sup> BENT NO. 5 REBAR
-  8' WIDE UTILITY & MINOR DRAINAGE EASEMENTS TO BE VACATED

I, WILLIAM C. PHILLIPS, A REGISTERED LAND SURVEYOR IN THE STATE OF SOUTH DAKOTA, DO HEREBY CERTIFY THAT AT THE DIRECTION OF PRESBYTERIAN RETIREMENT VILLAGE OF RAPID CITY, INC., I HAVE PREPARED FROM A SURVEY AND RECORD DOCUMENTS THE 8' UTILITY & MINOR DRAINAGE EASEMENT VACATION SHOWN HEREON.

