

# Plat of Lots A and B of Knight's of Columbus Subdivision

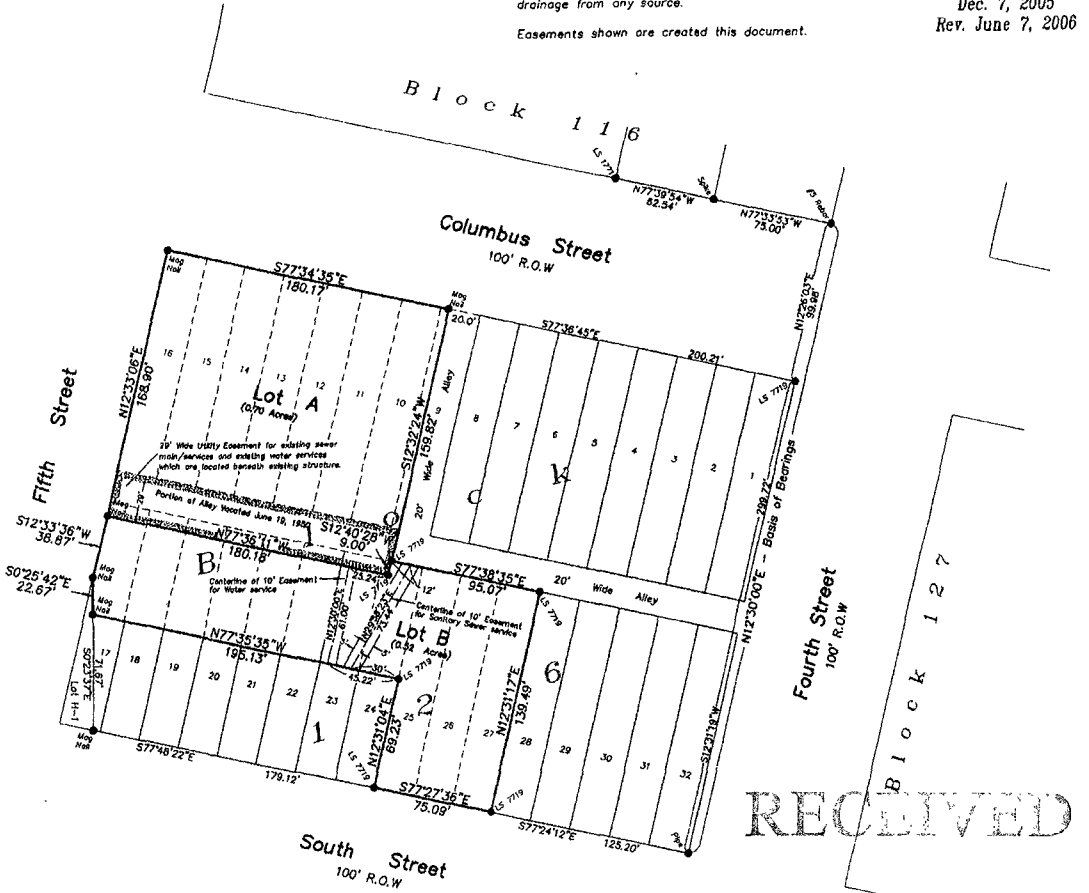
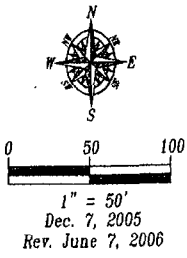
(formerly the West 5' of Lot 9 and 10 through 16 inclusive, Lots 25, 26, 27 and the North 70 Feet of Lot 17 less Lot H-1 and Lots 18 through 24 inclusive of Block 128 of the Original Townsite of Rapid City, including the vacated alley adjoined thereto)

all located in the NW 1/4 of Section 1, T1N, R7E, B.H.M., Rapid City, Pennington County, South Dakota

Prepared by:  
**Fisk Land Surveying & Consulting Engineers, Inc.**  
 P.O. Box 8164  
 Rapid City, SD 57709  
 (605) 348-1538  
 Project # 05-11-02  
**06PL088**

All major drainage easements shown hereon shall be kept free of all obstructions including but not limited to buildings walls, fences, hedges, trees & shrubs. These easements grant to all public authorities the right to construct, operate, maintain, inspect, and repair such improvements and structures as it deems expedient to facilitate drainage from any source.

Easements shown are created this document.



RECEIVED

JUN 6 2006