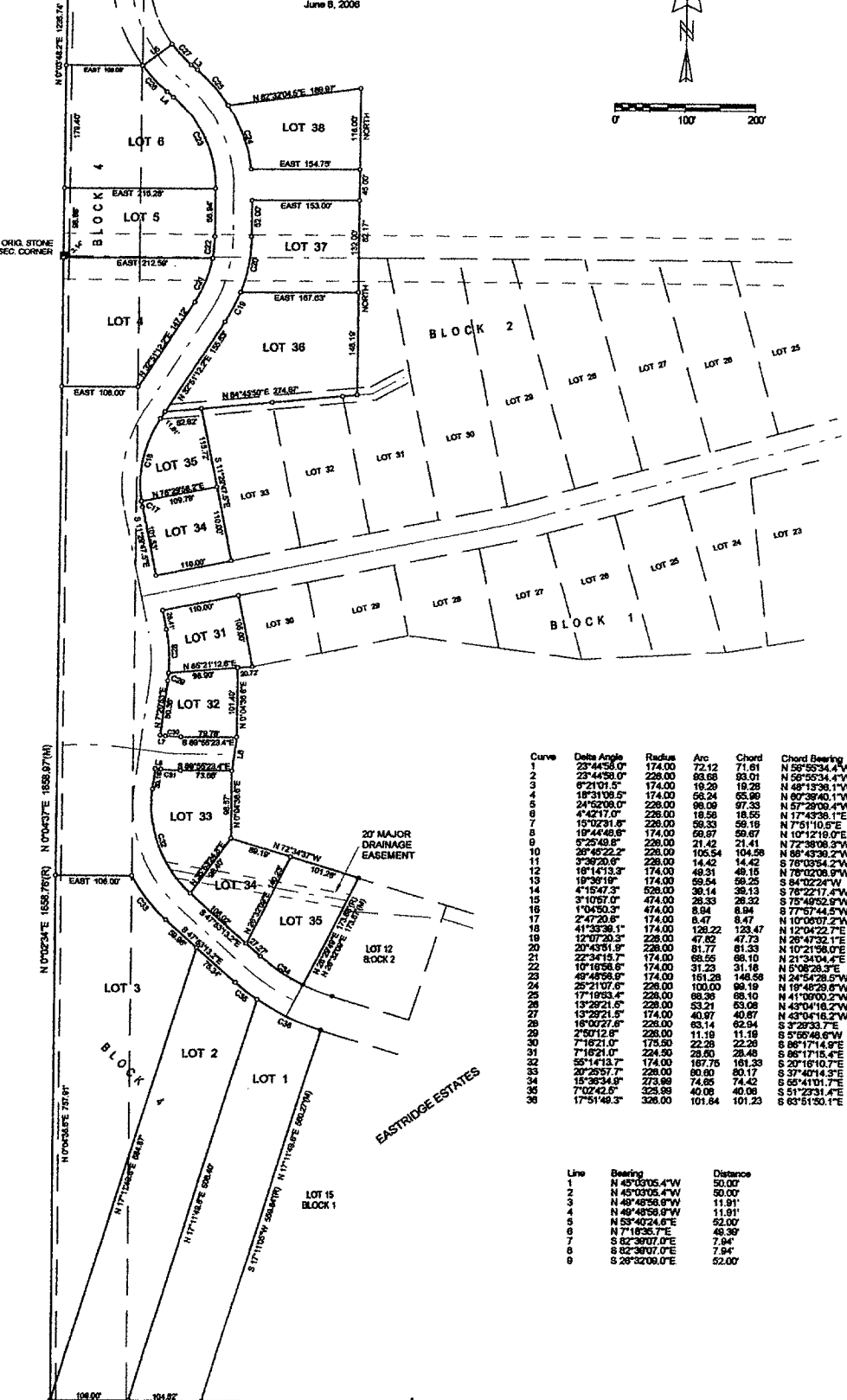
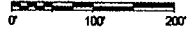
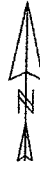


PLAT OF LOTS 16 THROUGH 35 IN BLOCK 1, LOTS 17 THROUGH 38 IN BLOCK 2 AND LOTS 1 THROUGH 6 IN BLOCK 4.
 LOCATED IN NW1/4 OF SECTION 24 AND SW1/4SW1/4 OF SECTION 13, T1N, R7E,
 RAPID CITY, PENNINGTON COUNTY, SOUTH DAKOTA

PREPARED BY:
 HANSON SURVEYING & MAPPING
 832 HORACE MANN DRIVE
 RAPID CITY, SD 57701
 605-388-9852
 June 8, 2008



Curve	Delta Angle	Radius	Arc	Chord	Chord Bearing
1	23°44'53.0"	174.00	72.12	71.81	N 56°55'34.4"W
2	23°44'53.0"	228.00	99.68	99.01	N 59°53'34.4"W
3	6°21'01.5"	174.00	18.29	18.28	N 49°13'38.1"W
4	18°31'08.5"	174.00	56.24	55.89	N 60°38'40.1"W
5	24°15'20.0"	228.00	98.08	97.33	N 57°29'08.4"W
6	4°42'17.0"	228.00	18.58	18.55	N 17°43'39.7"E
7	19°02'31.8"	228.00	59.33	59.19	N 7°51'10.5"E
8	18°44'49.8"	174.00	59.87	59.87	N 10°12'19.0"E
9	6°25'49.5"	228.00	21.42	21.41	N 72°38'08.5"W
10	26°45'22.2"	228.00	105.54	104.58	N 65°43'30.2"W
11	3°39'20.6"	228.00	14.42	14.42	S 78°03'54.2"W
12	10°14'13.3"	174.00	49.31	49.15	N 78°02'08.9"W
13	19°39'19"	174.00	69.54	69.25	S 84°02'24"W
14	4°15'47.3"	526.00	38.14	39.13	S 78°22'17.4"W
15	3°10'57.0"	474.00	26.33	26.32	S 75°49'52.9"W
16	11°04'50.3"	474.00	8.94	8.94	S 77°57'44.5"W
17	2°47'20.8"	174.00	8.47	8.47	N 10°00'07.2"W
18	41°33'38.1"	174.00	128.22	128.47	N 12°04'22.7"E
19	12°07'20.3"	228.00	47.82	47.73	N 28°47'32.1"E
20	23°43'51.5"	228.00	81.77	81.33	N 102°15'50.0"E
21	22°34'15.7"	174.00	68.55	68.10	N 21°34'04.4"E
22	10°18'58.8"	174.00	31.23	31.16	N 5°08'28.5"E
23	49°48'58.9"	174.00	151.28	148.58	N 24°54'28.9"W
24	25°21'07.6"	228.00	100.00	99.19	N 19°48'28.8"W
25	17°19'53.4"	228.00	68.38	68.10	N 41°00'00.2"W
26	13°29'21.5"	228.00	53.21	53.08	N 43°04'18.2"W
27	13°29'21.5"	174.00	40.87	40.67	N 42°04'18.2"W
28	18°00'27.8"	228.00	63.14	62.94	S 3°29'33.7"E
29	2°00'12.8"	228.00	11.19	11.19	S 5°55'48.6"W
30	7°18'21.0"	174.00	23.28	22.28	S 88°17'14.9"E
31	7°18'21.0"	224.50	28.80	28.48	S 88°17'14.9"E
32	55°14'13.7"	174.00	167.76	161.33	S 20°18'10.7"E
33	26°25'57.7"	228.00	80.80	80.17	S 37°40'14.3"E
34	19°38'34.9"	273.88	74.85	74.42	S 59°41'01.7"E
35	7°02'42.5"	228.99	40.08	40.08	S 51°23'31.4"E
36	17°51'48.3"	326.00	101.84	101.23	S 63°51'50.1"E

Line	Bearing	Distance
1	N 45°03'05.4"W	50.00
2	N 45°03'05.4"W	50.00
3	N 49°48'58.9"W	11.81
4	N 49°48'58.9"W	11.81
5	N 53°40'24.6"E	52.00
6	N 7°18'35.7"E	48.39
7	S 52°38'07.0"E	7.94
8	S 82°38'07.0"E	7.94
9	S 28°32'00.0"E	52.00