

# EXHIBIT A

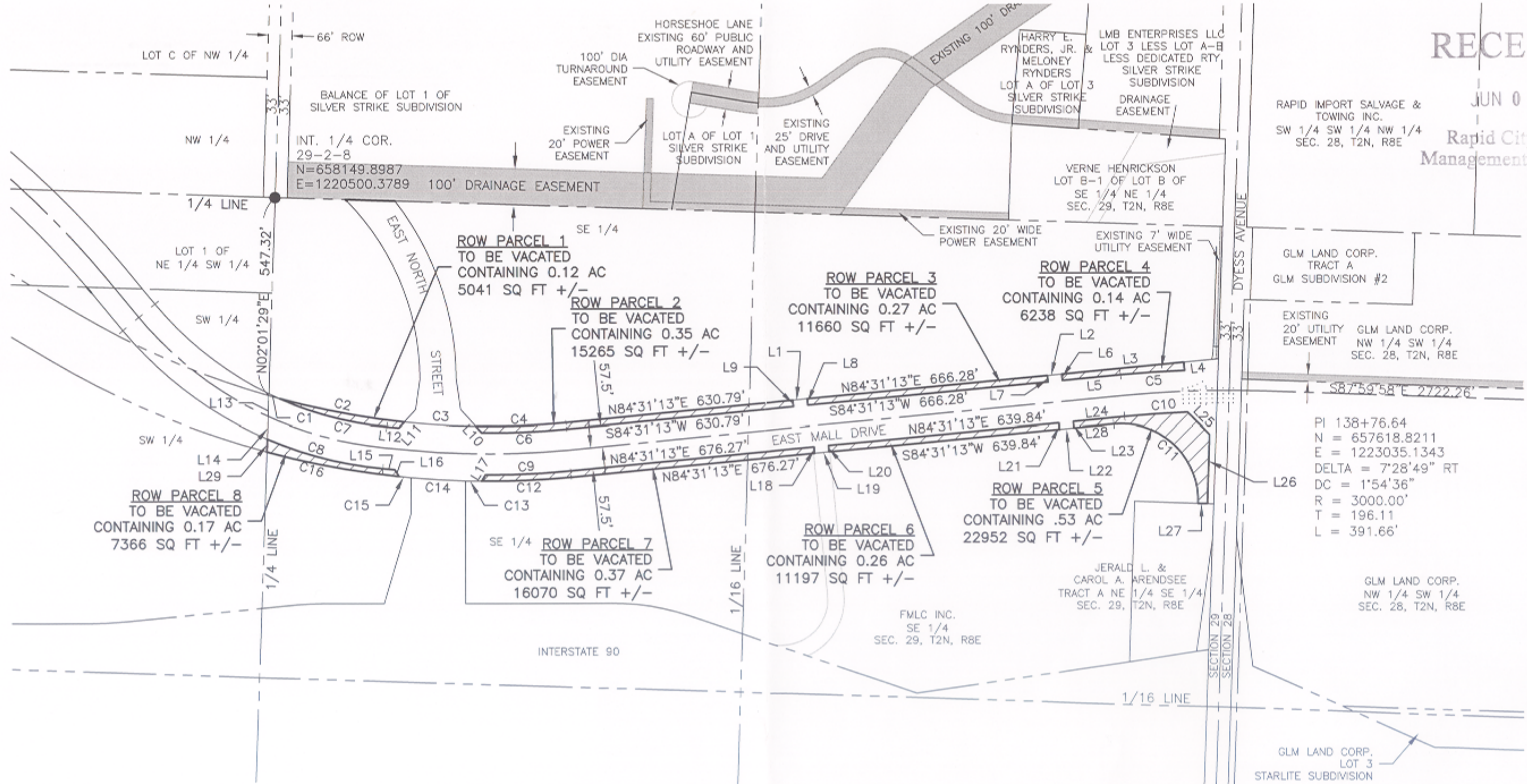
NUMBER	DIRECTION	DISTANCE
L1	N84°31'13"E	40.00'
L2	N84°31'13"E	40.00'
L3	N84°31'13"E	338.98'
L4	S05°28'47"E	22.67'
L5	S84°31'13"W	161.32'
L6	N05°28'47"W	17.50'
L7	S05°28'47"E	17.50'
L8	N05°28'47"W	17.50'
L9	S05°28'47"E	17.50'
L10	N42°17'28"W	23.94'
L11	S42°17'28"W	22.09'
L12	N84°37'06"W	33.35'

NUMBER	DIRECTION	DISTANCE
L13	N02°01'29"E	56.96'
L14	N02°01'29"E	61.98'
L15	S84°37'06"E	33.35'
L16	S31°31'41"E	21.69'
L17	N31°31'41"E	20.44'
L18	S05°28'47"E	17.50'
L19	N84°31'13"E	40.00'
L20	N05°28'47"W	17.50'
L21	S05°28'47"E	17.50'
L22	N84°31'13"E	40.00'
L23	N05°28'47"W	17.50'
L24	N84°31'13"E	142.28'
L25	S44°53'25"E	85.49'
L26	N02°01'29"E	231.64'
L27	N88°01'25"W	25.00'
L28	S84°31'13"W	110.72'
L29	N02°01'29"E	35.30'

NUMBER	DELTA ANGLE	CHORD BEARING	R (FT)	L (FT)	LC (FT)
C1	00°48'43"	S74°28'11"E	2216.83	31.42	31.42
C2	09°02'25"	S79°23'45"E	2216.83	349.77	349.41
C3	05°08'05"	S86°29'00"E	2216.83	198.67	198.60
C4	06°25'44"	N87°44'05"E	2216.83	248.74	248.61
C5	03°19'52"	S86°11'09"W	3057.50	177.75	177.73
C6	06°00'30"	S87°31'28"W	2234.33	234.30	234.20
C7	18°38'46"	N75°17'43"W	942.50	306.73	305.37
C8	17°54'56"	S75°39'38"E	1057.50	330.67	329.32
C9	05°45'05"	N87°23'46"E	2349.33	235.83	235.73
C10	03°23'57"	S86°13'12"W	2942.50	174.57	174.55
C11	97°51'07"	N46°49'30"W	211.48	361.18	318.86
C12	06°00'30"	S87°31'28"W	2366.83	248.20	248.08
C13	01°04'42"	N88°55'55"W	2366.83	44.55	44.55
C14	03°38'18"	N86°34'25"W	2366.83	150.29	150.27
C15	00°48'00"	N84°21'17"W	2366.83	33.05	33.04
C16	08°59'35"	N79°27'29"W	2366.83	371.50	371.12



**LEGEND**  
 ● FOUND SURVEY MONUMENT  
 VACATED EXISTING ROW



**RECEIVED**  
 JUN 06 2006  
 Rapid City Growth Management Department

RAPID IMPORT SALVAGE & TOWING INC.  
 SW 1/4 SW 1/4 NW 1/4 SEC. 28, T2N, R8E

GLM LAND CORP.  
 TRACT A  
 GLM SUBDIVISION #2

EXISTING 20' UTILITY EASEMENT  
 GLM LAND CORP.  
 NW 1/4 SW 1/4 SEC. 28, T2N, R8E

PI 138+76.64  
 N = 657618.8211  
 E = 1223035.1343  
 DELTA = 7°28'49" RT  
 DC = 1'54'36"  
 R = 3000.00'  
 T = 196.11  
 L = 391.66'

GLM LAND CORP.  
 NW 1/4 SW 1/4 SEC. 28, T2N, R8E

GLM LAND CORP.  
 LOT 3  
 STARLITE SUBDIVISION