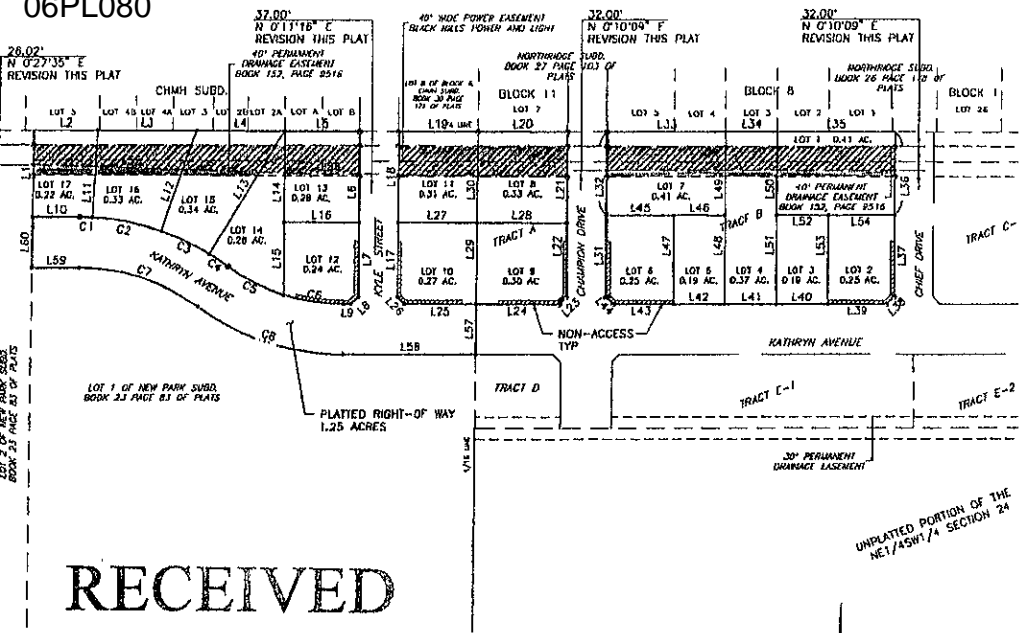


06PL080



LOT 2 OF NEW PARK SUBD. BOOK 23 PAGE 83 OF PLATS

LOT 1 OF NEW PARK SUBD. BOOK 23 PAGE 83 OF PLATS

PLATTED RIGHT-OF-WAY  
1.25 ACRES

NON-ACCESS  
TYP

30' PERMANENT  
DRAINAGE EASEMENT

UNPLATTED PORTION OF THE  
NET/ASW1/74 SECTION 24

RECEIVED

MAY 12 2006

Rapid City Growth

