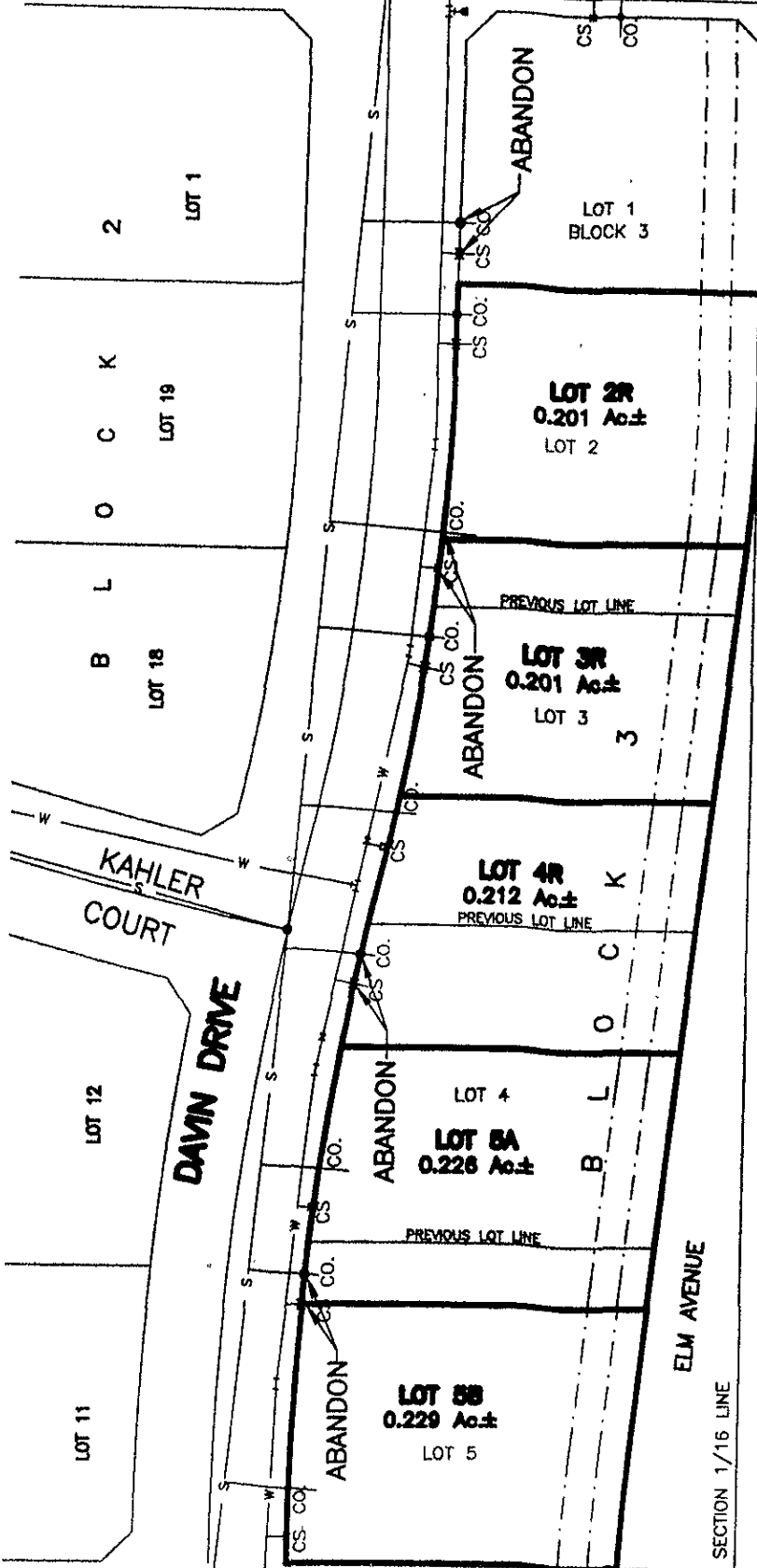


SECTION 18, T1N, R8E, BHM,
RAPID CITY, PENNINGTON COUNTY, SOUTH DAKOTA



ELM AVENUE

ABANDON SEWER SERVICE LINES (4 TOTAL)
EXPOSE AND CAP AT R.O.W.

ABANDON WATER SERVICE LINES (4 TOTAL)
EXPOSE AND ABANDON AT MAIN.

TRACT B OF PARCEL C
MJK SUBDIVISION

SECTION 1/16 LINE

