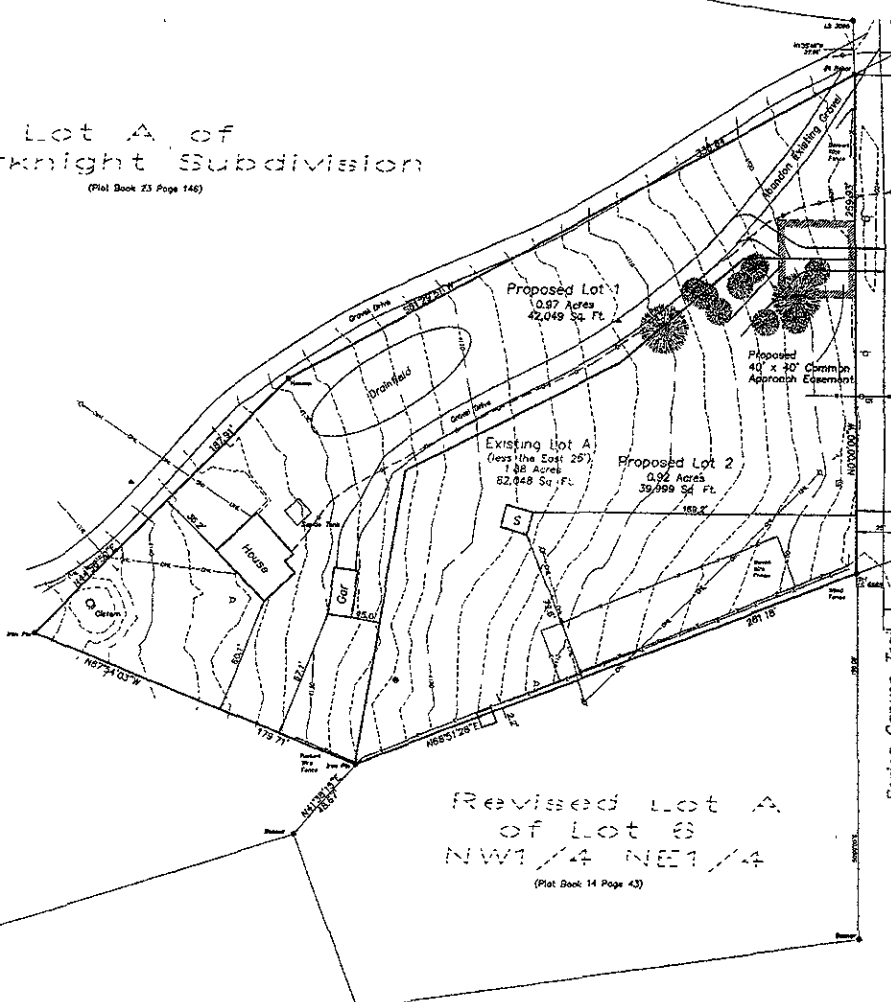


Lot A of  
Leberknight Subdivision  
(Plat Book 23 Page 146)

Sheridan Lake Road



Revised Lot A  
of Lot 6  
NW1/4 NE1/4  
(Plat Book 14 Page 43)

16

Subdivision

15

South  
(Plat Book 28 Page 20)

14

Countryside

13

Install 1" copper water service with curb stop 1' in ROW.  
Patch asphalt road in accordance with city of Rapid City  
standard detail. Seed/mulch and water disturbed/unpaved  
area in accordance with the city of Rapid City 2004  
standard specifications.