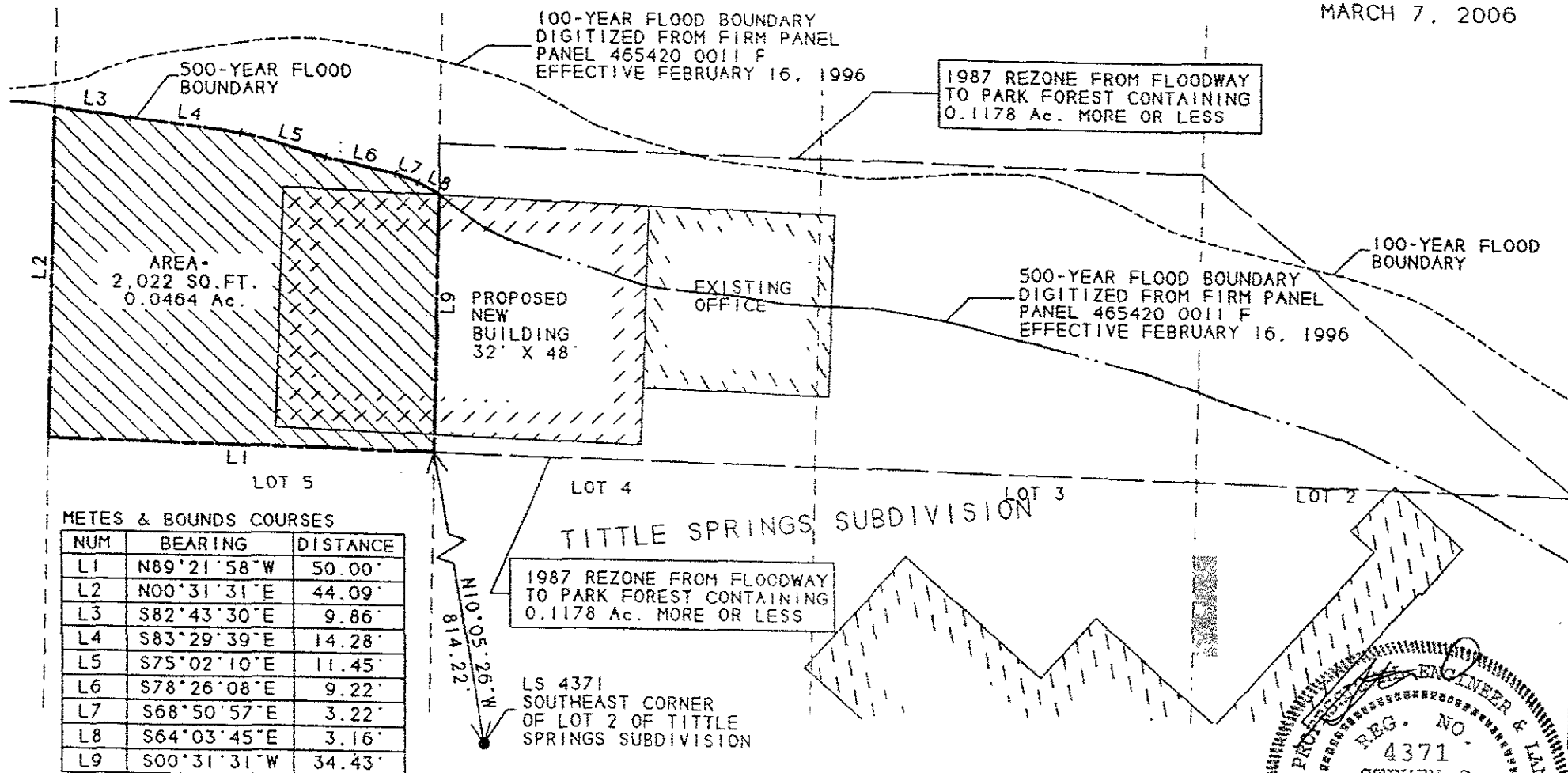


EXHIBIT OF REZONE  
FROM THE 500-YEAR FLOODPLAIN BOUNDARY TO PARK FOREST FOR  
A PORTION OF LOTS 2 - 6 OF TITTLE SPRINGS SUBD.  
LOCATED IN THE SW 1/4 AND SE 1/4 OF SECTION 18,  
T1N, R7E, BHM RAPID CITY, PENNINGTON COUNTY, SD



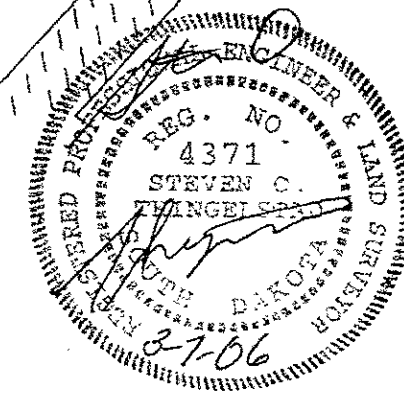
SCALE: 1" = 20'  
MARCH 7, 2006



NOTE:  
THE 100-YEAR AND 500-YEAR FLOOD  
BOUNDARY LINES SHOWN HEREON ARE  
REPRODUCED BY DIGITIZING THESE  
LINES FROM THE EFFECTIVE F.I.R.M.  
PANEL 465420 0011 F AND OVERLAYING  
THEM ONTO THIS MAP. THESE LINES ARE  
REFERENCED TO ACTUAL FIELD SURVEYED  
PROPERTY MONUMENTS THAT ARE IDENTIFIABLE  
ON THE F.I.R.M. PANEL. BUILDING LOCATIONS  
AND PROPERTY LINES SHOWN HEREON ARE BASED  
ON ACTUAL FIELD SURVEYED POSITIONS.

LEGEND

- PROPERTY LINES
- - - - - LOT LINES
- 1987 REZONE  
BOUNDARY
- PROPOSED REZONE  
BOUNDARY
- 100 YEAR FLOODLINE
- 500 YEAR FLOODLINE



SHEET 1 OF 2

PREPARED BY: STEVEN O. THINGELSTAD  
BRITTON ENGINEERING & LAND SURVEYING, INC.  
11750 NORTH HIGHWAY 79, BLACK HAWK, SD 57718  
TELEPHONE: (605) 718-3988