

# EXHIBIT A

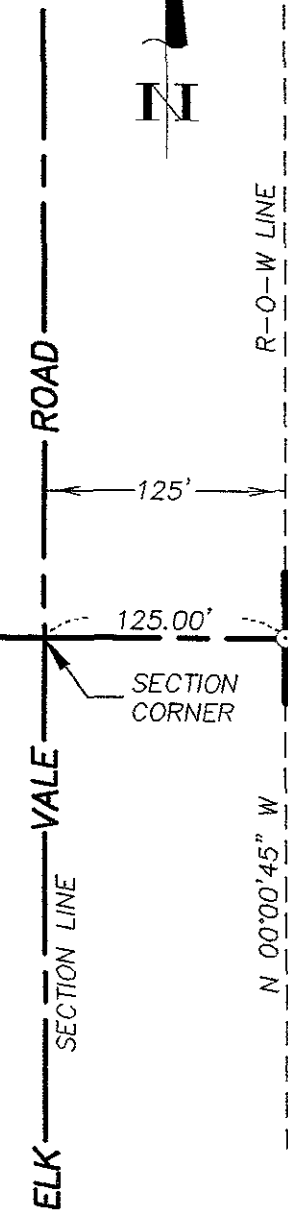
Vacated Section Line Right-of-Way  
located in the NW1/4 NW1/4 of Section 3, T1N, R8E, B.H.M.  
and in the SW1/4 SW1/4 of Section 34, T2N, R8E, B.H.M.  
Rapid City, Pennington County, South Dakota,

February, 2006

PREPARED BY:



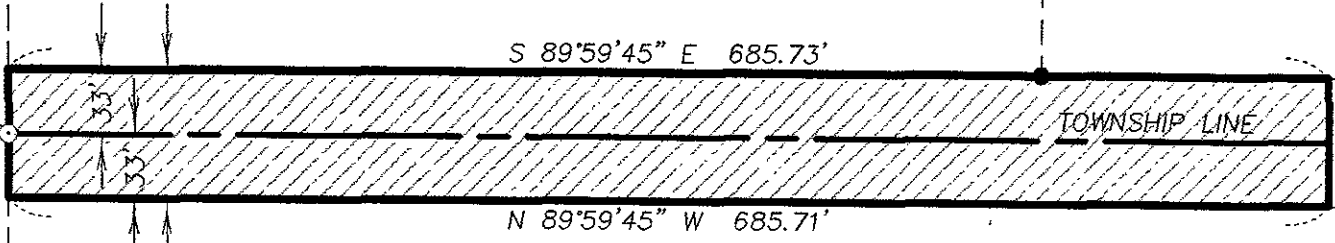
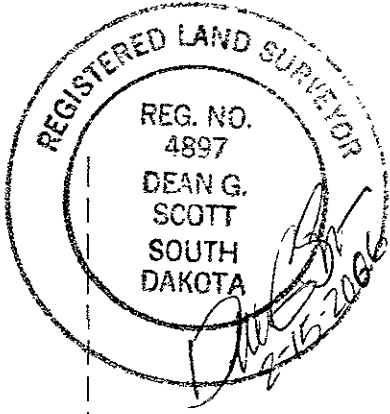
**D.C. Scott**  
SURVEYORS, INC.  
3153 ANDERSON ROAD  
RAPID CITY, SD 57703  
(605) 393-2400



R-O-W LINE

SW1/4 SW1/4  
SEC. 34

LOT 1  
NEFF'S SUBD.  
NO. 3



59.00'

T2N  
T1N

66' WIDE SECTION LINE  
RIGHT-OF-WAY  
VACATED THIS INSTRUMENT.

NW1/4 NW1/4  
SEC. 3

## RECEIVED

FEB 15 2006

Rapid City Growth  
Management Department

