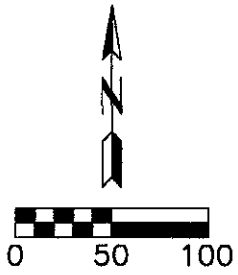


EASEMENT EXHIBIT "A"

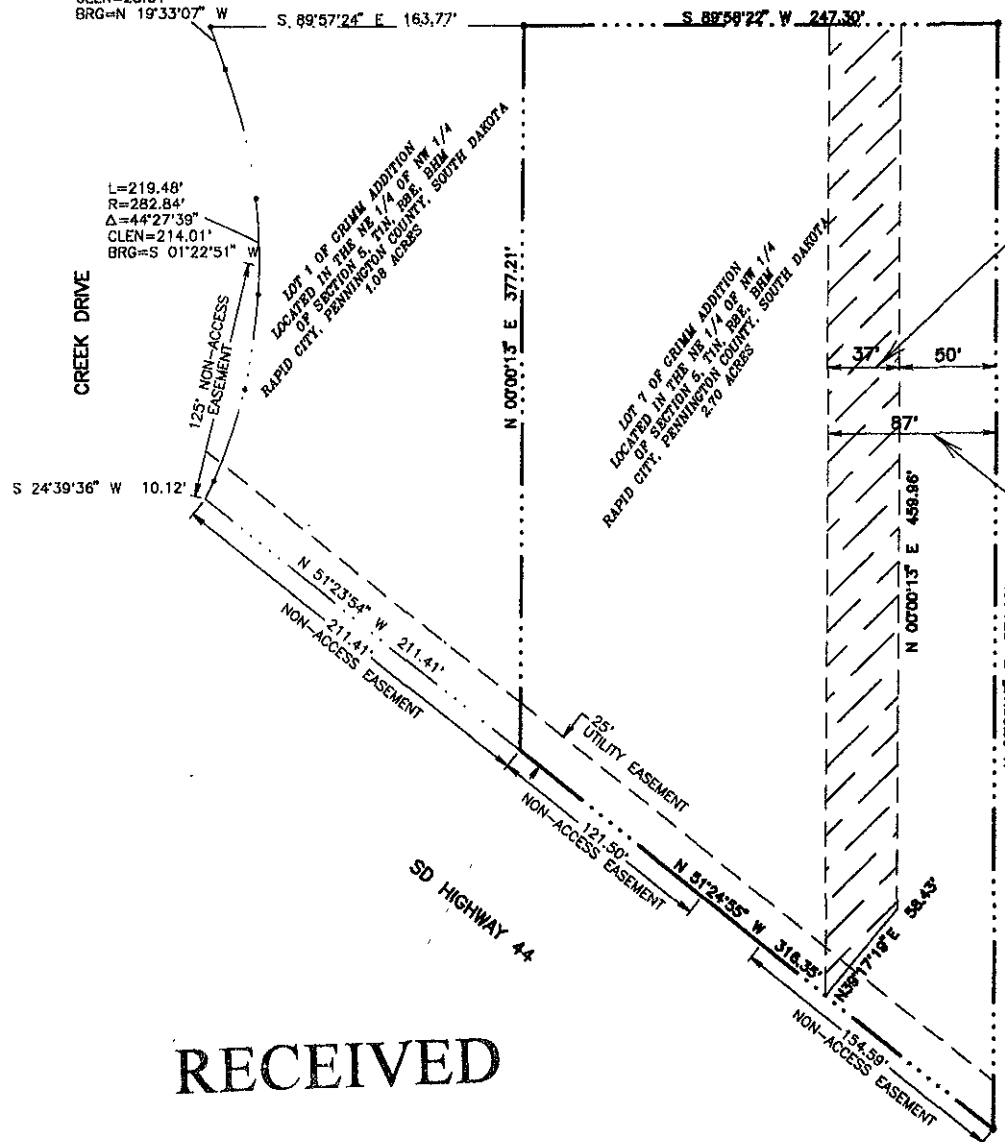
VACATION OF A PORTION OF DRAINAGE EASEMENT OVER AND ACROSS
LOT 7 OF GRIMM ADDITION, AS PREVIOUSLY RECORDED
IN BOOK 71, PAGE 5684 AND 5685
AT THE PENNINGTON COUNTY REGISTER OF DEEDS OFFICE
IN THE NE 1/4 OF NW 1/4 SECTION 5, T1N, R8E, B.H.M.
RAPID CITY, PENNINGTON COUNTY, S.D.



LOT 2R OF GRIMM ADDITION
LOCATED IN THE NE 1/4 OF NW 1/4
OF SECTION 5, T1N, R8E, BHM
RAPID CITY, PENNINGTON COUNTY, SOUTH DAKOTA

L=23.64'
R=506.01'
Δ=02°40'36"
CLEN=23.64'
BRG=N 19°33'07" W

L=219.48'
R=282.84'
Δ=44°27'39"
CLEN=214.01'
BRG=S 01°22'51" W



37' WIDE PORTION OF DRAINAGE EASEMENT (VACATED BY THIS DOCUMENT)

EXISTING 87' WIDE DRAINAGE & UTILITY EASEMENT



RECEIVED

MAR 23 2006