

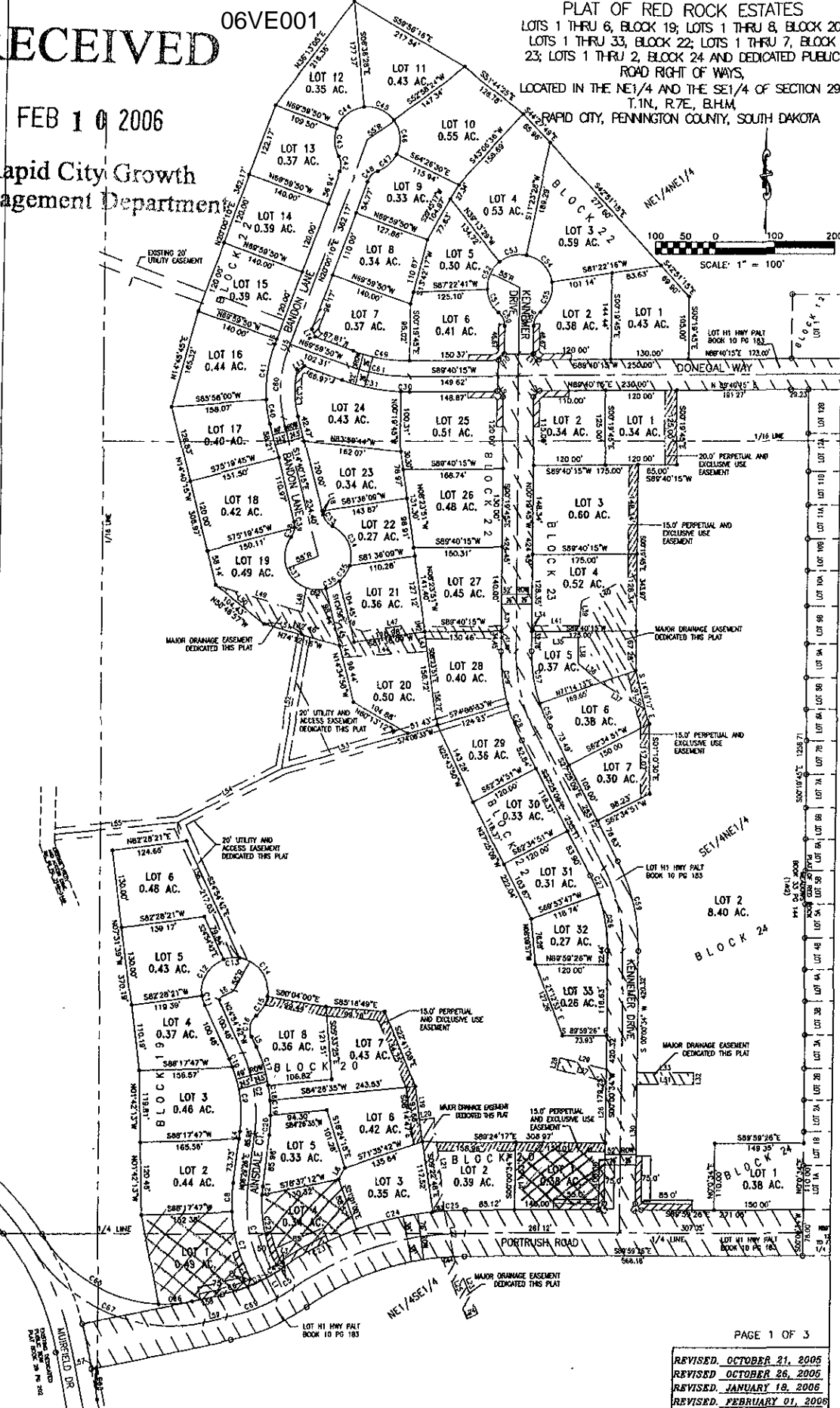
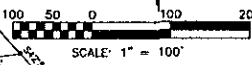
RECEIVED

06VE001

PLAT OF RED ROCK ESTATES
LOTS 1 THRU 6, BLOCK 19; LOTS 1 THRU 8, BLOCK 20
LOTS 1 THRU 33, BLOCK 22; LOTS 1 THRU 7, BLOCK
23; LOTS 1 THRU 2, BLOCK 24 AND DEDICATED PUBLIC
ROAD RIGHT OF WAYS,
LOCATED IN THE NE 1/4 AND THE SE 1/4 OF SECTION 29
T.1N, R.7E, B.H.M.
RAPID CITY, PENNINGTON COUNTY, SOUTH DAKOTA

FEB 10 2006

Rapid City Growth
Management Department



REVISED, OCTOBER 21, 2005
REVISED OCTOBER 26, 2005
REVISED, JANUARY 18, 2006
REVISED, FEBRUARY 01, 2006