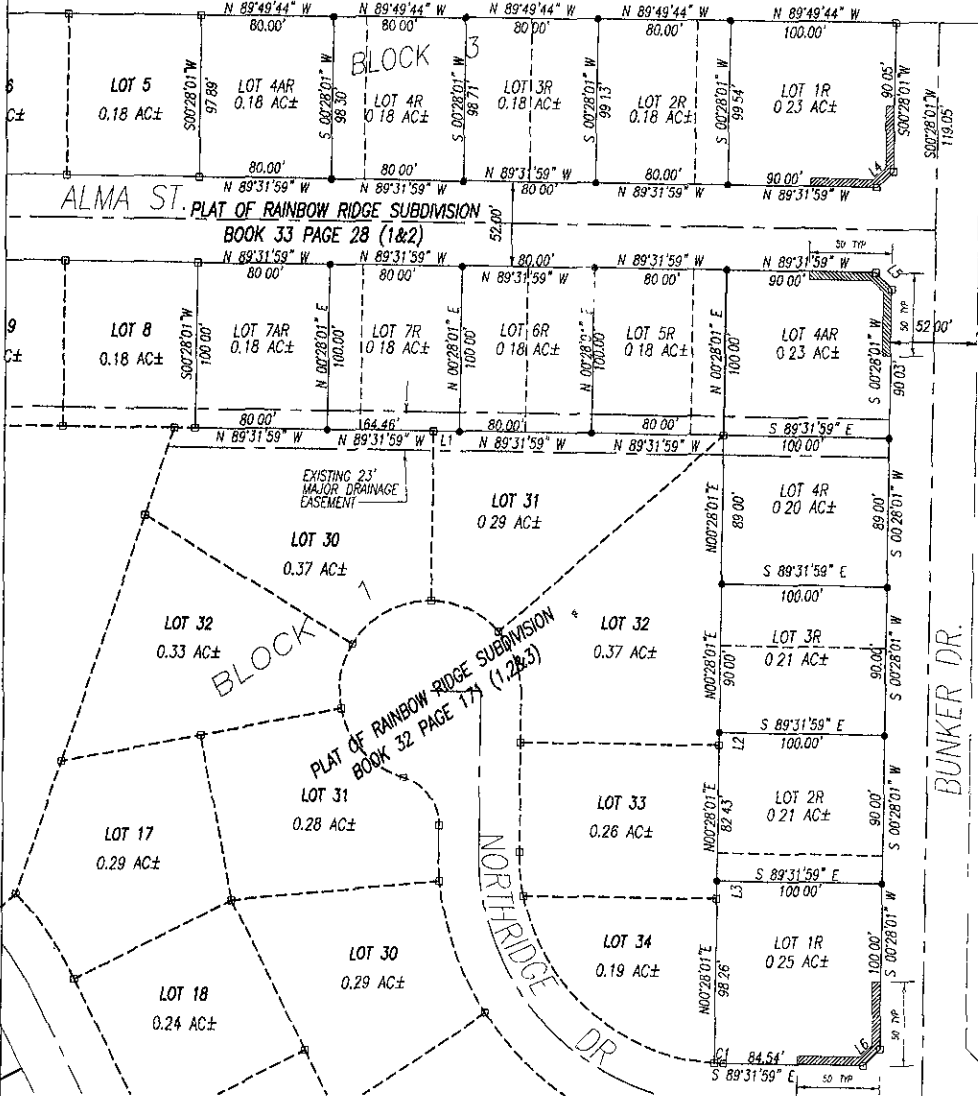


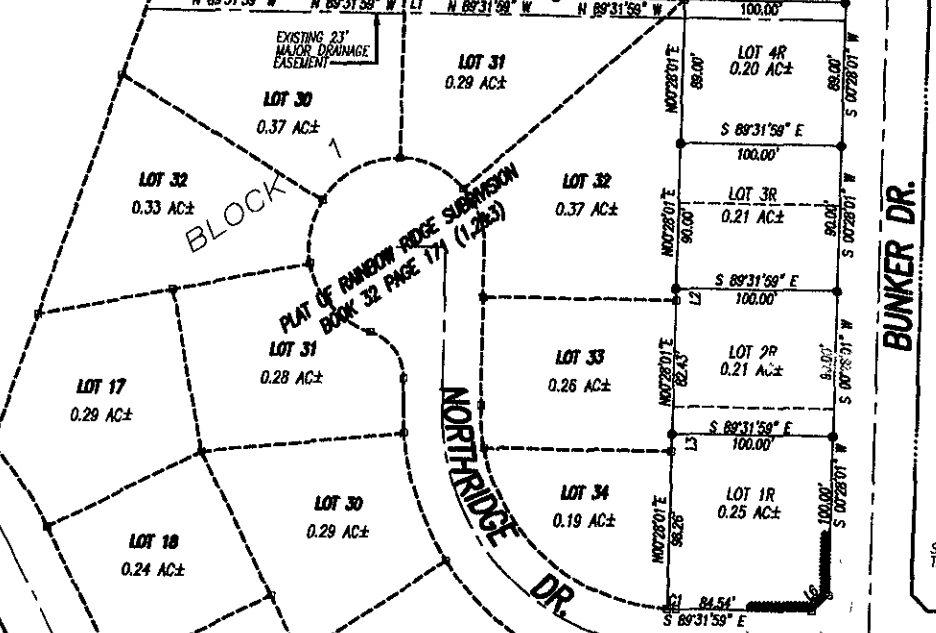
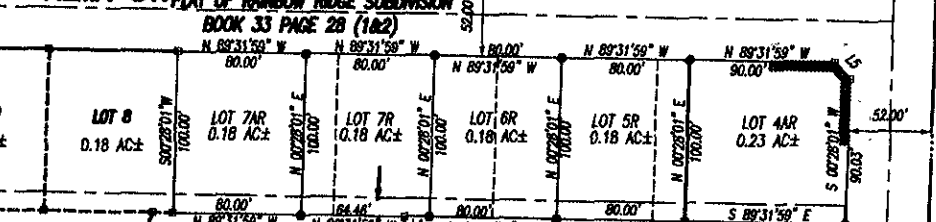
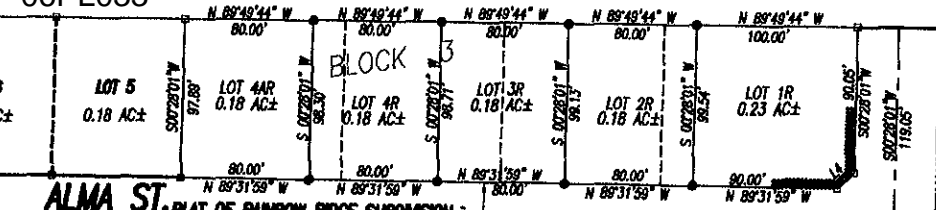
06PL033

PLAT OF RAINBOW RIDGE SUBDIVISION

LOTS 1R, 2R, 3R, 4R, 4AR, 5R, 6R, 7R, AND 7AR, BLOCK 1, AND LOTS 1R, 2R, 3R, 4R, AND 4AR, BLOCK 3, FORMERLY LOTS 1, 2, 3, 4, 5, 6, AND 7, BLOCK 1, AND LOTS 1, 2, 3, AND 4, BLOCK 3, OF RAINBOW RIDGE SUBDIVISION, LOCATED IN THE SE1/4 NE1/4 IN SECTION 23, T2N, R7E, B.H.M., CITY OF RAPID CITY, PENNINGTON COUNTY, SOUTH DAKOTA



SW1/4 NW1/4 SEC 23, T2N, R7E, BHM



Rap
Manag

SW1/4 NW1/4 SEC. 24
T2N, R7E, B1M