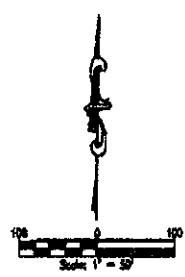
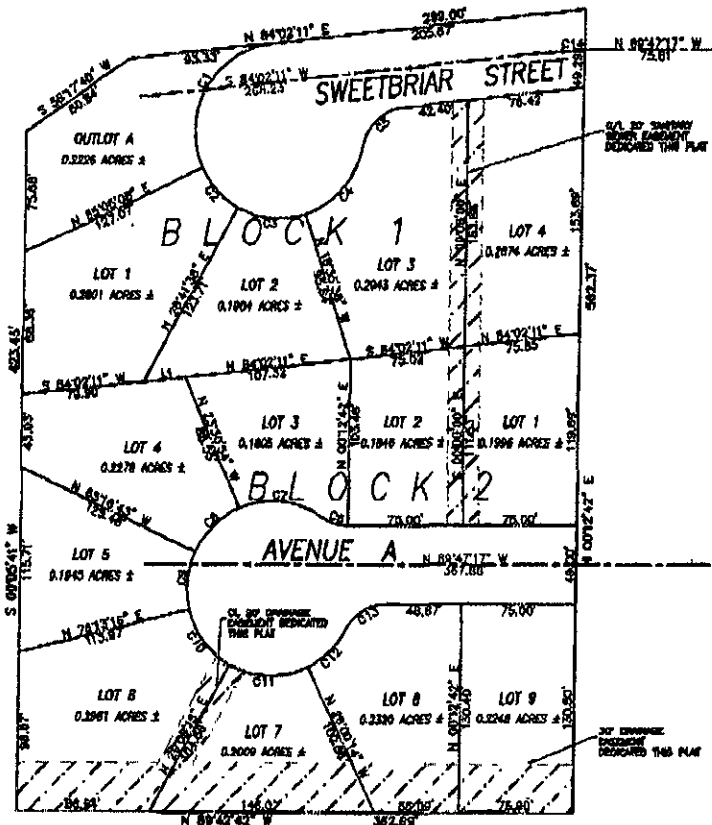


INCLUDING LOTS 1 THRU 4, BLOCK 1,
 LOTS 1 THRU 9, BLOCK 2,
 AND OUTLOT A AND DEDICATED STREETS
 LOCATED IN A PREVIOUSLY UNPLATTED PORTION OF THE NW1/4 SW1/4
 SECTION 3, T1N, R8E, B1W
 RAPID CITY, PENNINGTON COUNTY, SOUTH DAKOTA



LEGEND

- DENOTES SET 5/8" REBAR WITH SURVEY CAP MARKED "RLS 0117"
- DENOTES FOUND SURVEY MONUMENT
- BASIS OF BEARINGS: PER PREVIOUSLY RECORDED PLAT(S)

SHORT COURSE TABLE

NUMBER	DIRECTION	DISTANCE
01	S 89°22'11" W	27.26

CURVE TABLE

NUMBER	BLANKS	DETA	ANG P	ARC LEN	TANGENT	CHORD	W/ANG	CHORD	LENGTH
01	00.00	108.713	104.89	77.04	S 89°22'11" W	88.87			
02	00.00	389.510	34.83	18.04	N 43°04'33" W	34.83			
03	00.00	477.719	43.39	24.05	N 64°37'00" W	44.77			
04	00.00	602.307	58.82	37.88	N 60°34'18" E	58.82			
05	00.00	727.258	73.94	52.44	N 47°01'12" E	73.94			
06	00.00	852.209	88.92	67.00	N 28°22'27" W	88.92			
07	00.00	977.160	103.89	81.04	N 44°04'00" W	103.89			
08	00.00	1102.111	118.87	95.09	N 40°26'12" E	118.87			
09	00.00	1227.062	133.84	109.14	S 60°20'17" W	133.84			
10	00.00	1352.013	148.81	123.19	S 37°03'04" P	148.81			
11	00.00	1476.964	163.78	137.24	S 48°25'00" P	163.78			
12	00.00	1601.915	178.75	151.29	E 48°24'30" W	178.75			
13	00.00	1726.866	193.72	165.34	N 84°03'27" E	193.72			
14	00.00	1851.817	208.69	179.39	N 87°02'27" E	208.69			

NOTES:

1. MINOR DRAINAGE AND UTILITY EASEMENTS ARE HEREBY ESTABLISHED & WIDE ON THE INTERIOR SIDE OF ALL LOT LINES. (EXCEPT WHERE MAJOR DRAINAGE EASEMENTS ARE LOCATED)
2. TOTAL PLATTED AREA: 3.0027 ACRES; LOTS: 3.2035 ACRES; DEDICATED PUBLIC RIGHT-OF-WAY: 0.7022 ACRES.
3. ANY MAJOR DRAINAGE EASEMENT SHOWN HEREON SHALL BE KEPT FREE OF ALL OBSTRUCTIONS INCLUDING BUT NOT LIMITED TO BUILDINGS, WALLS, FENCES, HEDGES, TREES, AND SHRUBS. THESE EASEMENTS GRANT TO ALL PUBLIC AUTHORITIES THE RIGHT TO CONSTRUCT, OPERATE, MAINTAIN, INSPECT AND REPAIR SUCH IMPROVEMENTS AND STRUCTURES AS IT DEEMS EXPEDIENT TO FACILITATE DRAINAGE FROM ANY SOURCE.