

PRELIMINARY PLAT OF

LOT 1R OF NEFF'S SUBDIVISION NO. 3
 (FORMERLY LOT 1 OF NEFF'S SUBDIVISION NO. 3 AND
 UNPLATTED LAND IN THE SW1/4 SW1/4 OF SECTION 34),
 LOCATED IN THE SW1/4 SW1/4 OF SECTION 34;
 TOWNSHIP 2 NORTH, RANGE 8 EAST OF THE BLACK HILLS MERIDIAN,
 RAPID CITY, PENNINGTON COUNTY, SOUTH DAKOTA.

JANUARY, 2006

N

PREPARED BY:

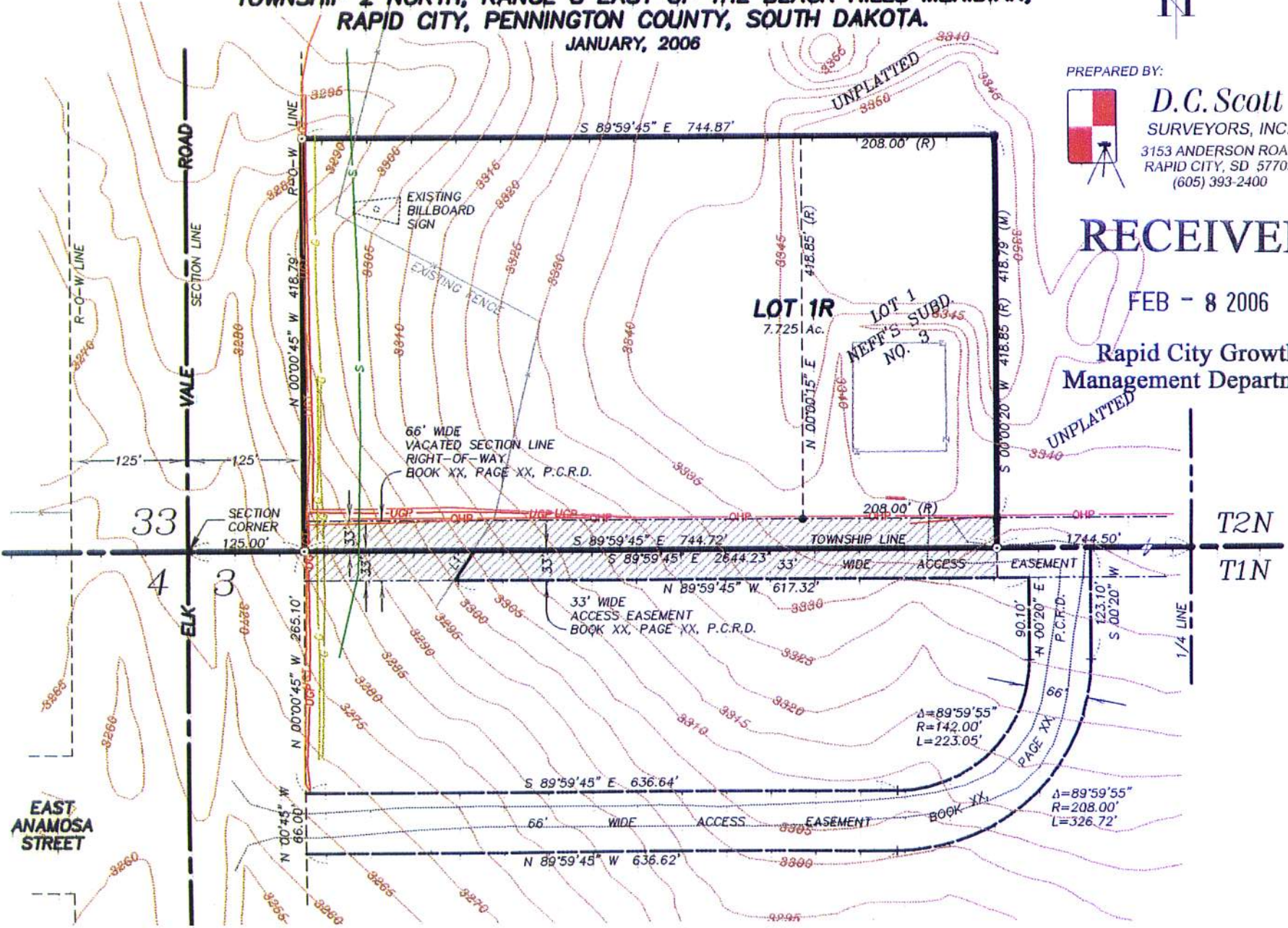


D.C. Scott
 SURVEYORS, INC.
 3153 ANDERSON ROAD
 RAPID CITY, SD 57703
 (605) 393-2400

RECEIVED

FEB - 8 2006

Rapid City Growth
 Management Department



EAST ANAMOSA STREET