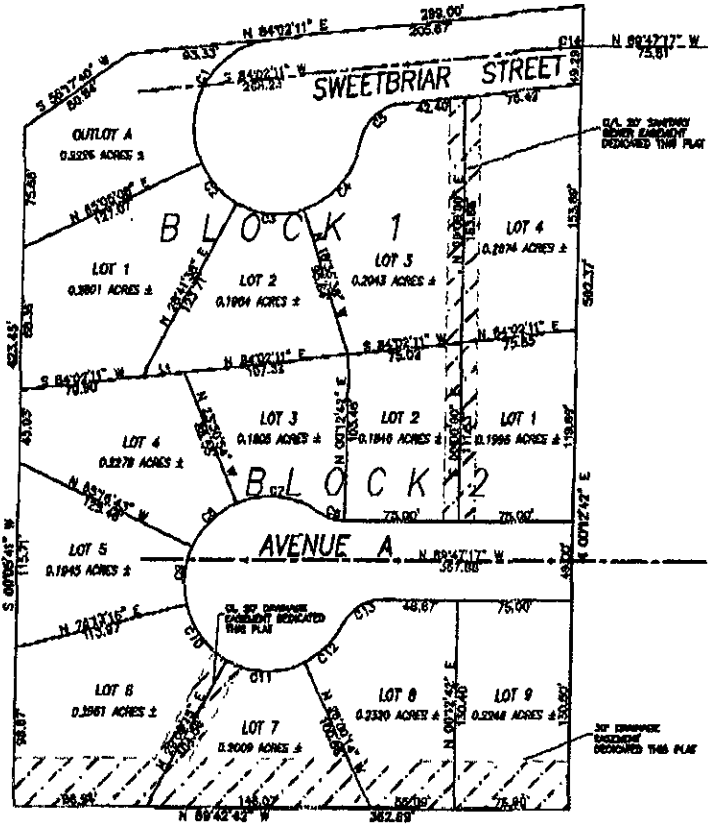


06PL015

PLAN OF NEFT SUBDIVISION V

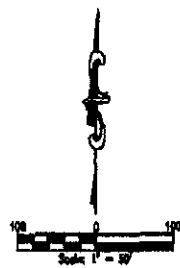
INCLUDING LOTS 1 THRU 4, BLOCK 1,
LOTS 1 THRU 9, BLOCK 2,
AND OUTLOT A AND DEDICATED STREETS

LOCATED IN A PREVIOUSLY UNPLATTED PORTION OF THE NW1/4 SW1/4
SECTION 3, T1N, R8E, B1M
RAPID CITY, PENNINGTON COUNTY, SOUTH DAKOTA



0.5' BY 5' DRIVEWAY
SHOWN EASEMENT
DEDICATED THIS PLAN

30' DRIVEWAY
SHOWN EASEMENT
DEDICATED THIS PLAN



LEGEND

- DENOTES SET 3/4" BEARER WITH SURVEY CAP MARKED "1511"
- D DENOTES FOUND SURVEY MONUMENT
- BASIS OF BEARING: PER PREVIOUSLY RECORDED PLAT(S)

SHORT COURSE TABLE

BEARING	DIRECTION	DISTANCE
66°42'11" W		27.24'

CURVE TABLE

NUMBER	RADIUS	CHORDAL CURVE	TANGENT	CHORD	CHORD TO POINT	CHORD LENGTH
01	158.00'	11043.170'	106.53'	172.54'	S 48°23'40" W	158.53'
02	84.00'	2623.320'	26.53'	14.00'	N 43°08'00" W	84.53'
03	53.00'	4717.018'	43.50'	24.00'	N 84°52'00" W	48.12'
04	30.00'	2623.320'	26.53'	14.00'	N 40°38'18" E	30.00'
05	30.00'	2273.530'	26.54'	21.44'	N 4°19'19" E	30.34'
06	53.00'	3032.000'	10.50'	0.50'	N 23°27'27" W	70.10'
07	78.00'	9472.017'	94.00'	0.00'	N 84°00'00" W	04.00'
08	20.00'	4170.161'	16.00'	0.00'	N 40°00'12" E	10.21'
09	03.00'	3032.011'	03.00'	0.21'	S 00°29'17" W	06.27'
10	05.00'	4294.170'	41.18'	02.85'	S 37°34'45" E	43.83'
11	53.00'	51174.99'	50.40'	20.70'	S 88°31'00" P	50.83'
12	85.00'	13704.23'	84.40'	17.82'	S 87°54'50" W	134.00'
014	50.00'	6724.31'	38.40'	18.74'	N 34°03'22" E	31.00'
014	50.00'	6410.11'	37.33'	18.19'	N 27°02'31" E	17.32'

NOTES

1. MINOR DRAINAGE AND UTILITY EASEMENTS ARE HEREBY ESTABLISHED BY WIDE ON THE INTERIOR SIDE OF ALL LOT LINES. (EXCEPT WHERE MAJOR DRAINAGE EASEMENTS ARE LOCATED)
2. TOTAL PLATTED AREA: 3.0027 ACRES; LOTS: 3.2035 ACRES; DEDICATED PUBLIC RIGHT-OF-WAY: 0.7092 ACRES.
3. ANY MAJOR DRAINAGE EASEMENT SHOWN HEREON SHALL BE KEPT FREE OF ALL OBSTRUCTIONS INCLUDING BUT NOT LIMITED TO BUILDINGS, WALLS, FENCES, HEDGES, TREES, AND SHALLING. THESE EASEMENTS GRANT TO ALL PUBLIC AUTHORITIES THE RIGHT TO CONSTRUCT, OPERATE, MAINTAIN, IMPROVE AND REPAIR SUCH IMPROVEMENTS AND STRUCTURES AS IT DEEMS EXPEDIENT TO FACILITATE DRAINAGE FROM ANY SOURCE.

PREPARED BY:
ARLETH & ASSOCIATES

25 KIRK ROAD
DEADWOOD, SD 57738
605-578-1837

JOB NO
02-0020

DATE:
SCALE: 1"=50'
DRAWN:

APPROVED:
DPA:

Prepared for:
Dream Design International, Inc.
328 Kansas City Street, Suite 4
Rapid City, SD 57701
605-241-7774 dmi@dreamdesigninfo.com