

RECEIVED

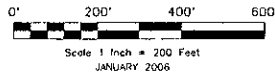
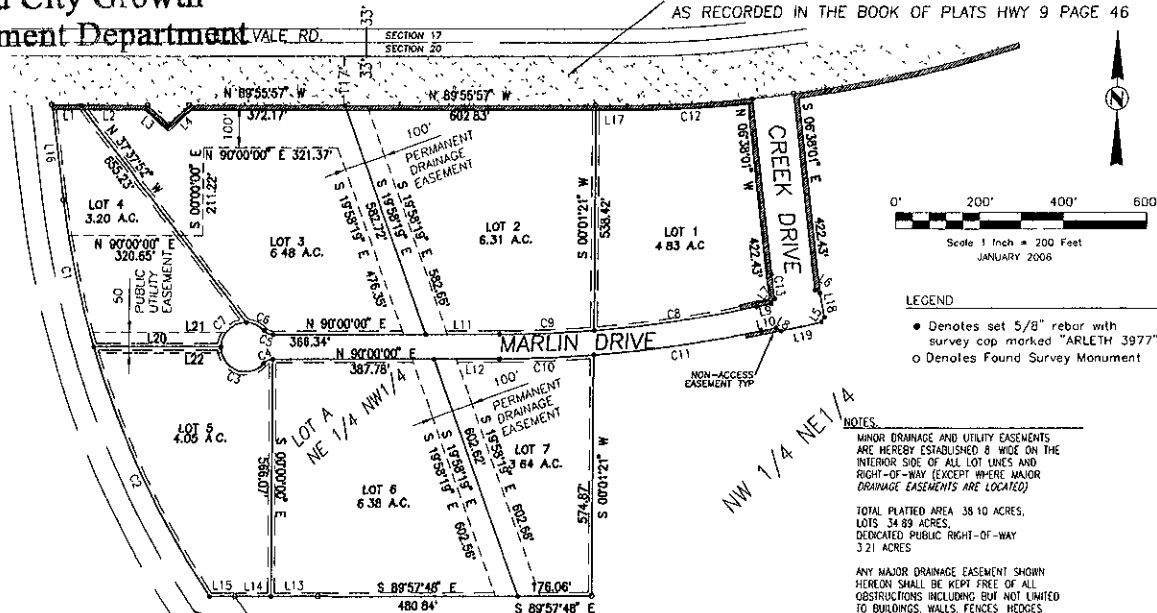
# PLAT OF LOTS 1 THRU 7 OF MARLIN INDUSTRIAL PARK

AND DEDICATED PUBLIC RIGHT OF WAY  
LOCATED IN LOT A OF THE NE1/4NW1/4 AND A PORTION OF  
THE NW1/4NE1/4 OF SECTION 20, T1N, R8E, B H M,  
RAPID CITY, PENNINGTON COUNTY, SOUTH DAKOTA

JAN 13 2006

Rapid City Growth  
Development Department

CONTROLLED EASEMENT PER D.O.T.  
AS RECORDED IN THE BOOK OF PLATS HWY 9 PAGE 46



## LEGEND

- Denotes set 5/8" rebar with survey cap marked "ARLETH 3977"
- o Denotes Found Survey Monument

## NOTES:

MINOR DRAINAGE AND UTILITY EASEMENTS ARE HEREBY ESTABLISHED & WIDE ON THE INTERIOR SIDE OF ALL LOT LINES AND RIGHT-OF-WAY (EXCEPT WHERE MAJOR DRAINAGE EASEMENTS ARE LOCATED)

TOTAL PLATED AREA 38.10 ACRES,  
LOTS 34.89 ACRES,  
DEDICATED PUBLIC RIGHT-OF-WAY  
3.21 ACRES

ANY MAJOR DRAINAGE EASEMENT SHOWN HEREON SHALL BE KEPT FREE OF ALL OBSTRUCTIONS INCLUDING BUT NOT LIMITED TO BUILDINGS, WALLS, FENCES, HEDGES, TREES, AND SHRUBS. THESE EASEMENTS GRANT TO ALL PUBLIC AUTHORITIES THE RIGHT TO CONSTRUCT, OPERATE, MAINTAIN, INSPECT AND REPAIR SUCH IMPROVEMENTS AND STRUCTURES AS IT DEEMS EXPEDIENT TO FACILITATE DRAINAGE FROM ANY SOURCE

NON-ACCESS EASEMENTS ARE HEREBY

DAKOTA, MINNESOTA  
AND EASTERN R.R.