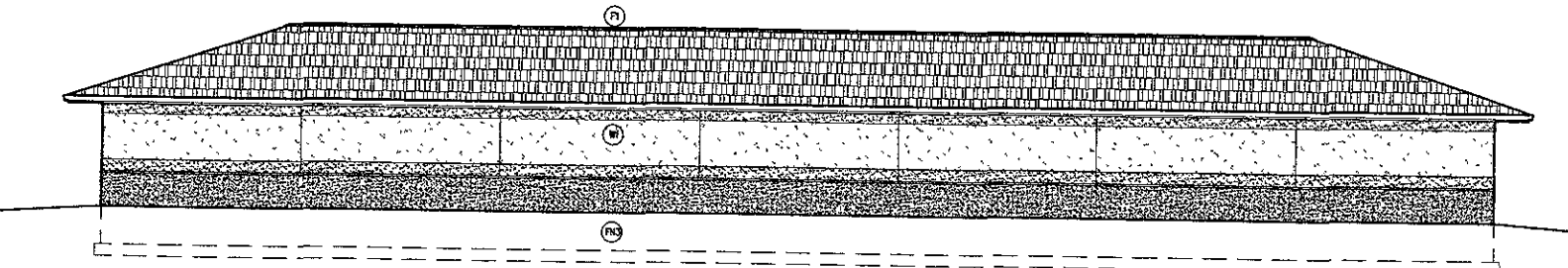
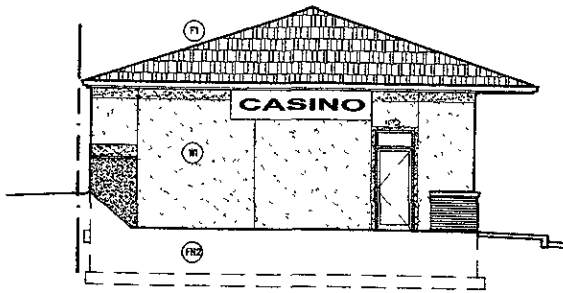


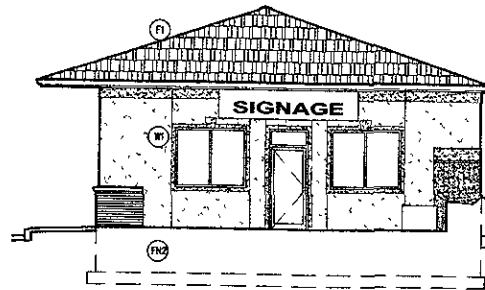
SIDE (EAST) ELEVATION
SCALE: 3/32" = 1'-0"



SIDE (WEST) ELEVATION
SCALE: 3/32" = 1'-0"



REAR (SOUTH) ELEVATION
SCALE: 3/32" = 1'-0"



FRONT (NORTH) ELEVATION
SCALE: 3/32" = 1'-0"

EXTERIOR FINISH COLORS		
	FIELD COLORS	ACCENT COLORS
BRICK	EARTH TONE GRAYS	
EIFS	LIGHT GRAYS	DARK GRAYS
ROOF SHINGLES	MEDIUM GRAYS	
DOOR/WINDOW FRAMES	LIGHT TO MEDIUM GRAYS	
SIGNS	SEE SIGN DRAWINGS	SEE SIGN DRAWINGS

**KENNEDY
DESIGN
GROUP INC**
1855 ENCHANTED PINES DRIVE
RAPID CITY, SD 57701
PHONE: 605.342.5314
FAX: 605.342.5314

CLIENT:
REEL WYING LLC
4941 ENCHANTED PINES DRIVE
RAPID CITY, SD 57701
605.716.1800

PROJECT:
NEW COMMERCIAL MALL
703 & 705 INDIANA STREET
RAPID CITY, SD 57701

EXTERIOR ELEVATIONS

PROJECT NO: 527
FILE NO: 527-2
DRAWN BY: RKK
CHECK BY: RKK
DATE: 12.09.05
REVISION #1: 0.0.0
REVISION #2: 0.0.0

A3

Drawing Number