

RECEIVED

DEC 30 2005

Rapid City Growth Management Department

05SV088

PRELIMINARY PLAT OF LOTS 8, 9, 10, 11, AND 12 OF BLOCK 1, AND DEDICATED PUBLIC RIGHT-OF-WAY OF PARK HILL SUBDIVISION FORMERLY TRACT B OF THE NW1/4 SE1/4 OF SECTION 7, T1N, R8E LOCATED IN THE NW1/4 OF SE1/4, SECTION 7, T1N, R8E, B.H.M. RAPID CITY, PENNINGTON COUNTY, SOUTH DAKOTA

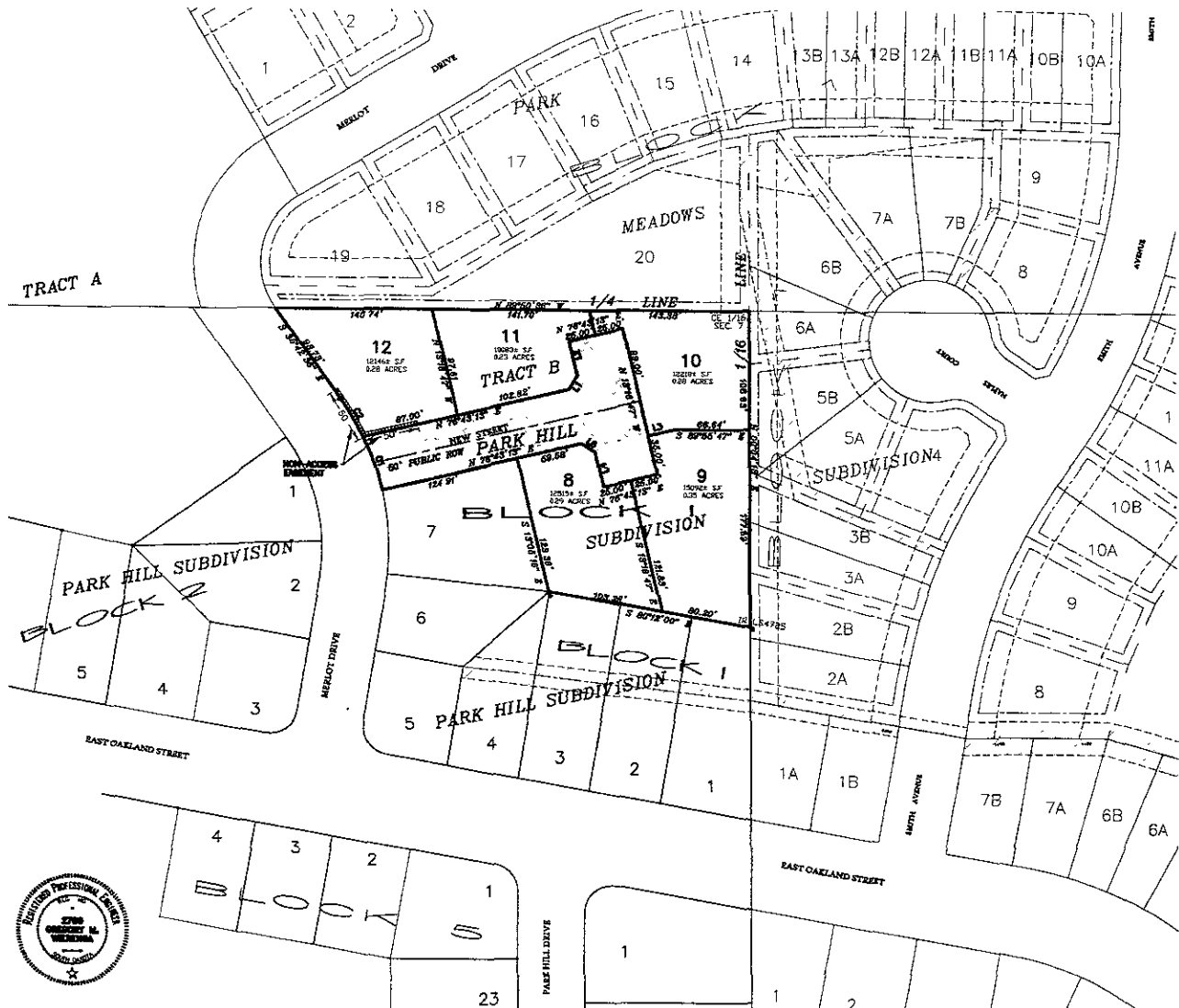


LINE	BEARING	DISTANCE
L1	S 59°45'15" W	14.14'
L2	N 13°16'47" W	32.00'
L3	N 78°43'15" E	23.00'
L4	S 13°16'47" W	32.00'
L5	S 58°16'47" E	14.14'

CURVE	RADIUS	ARC LENGTH	DELTA ANGLE
C1	232.01'	80.36'	122°33'17"
C2	232.01'	40.97'	100°07'00"

- - - - - EXISTING MAJOR DRAINAGE EASEMENT
- ▭ DEDICATED RIGHT-OF-WAY

- NOTES:**
- All major drainage easements shown herein shall be kept free of all obstructions including but not limited to buildings, walls, fences, hedges, trees and shrubs. These easements grant to all public authorities the right to construct, operate, maintain, inspect and repair such improvements and structures as it deems expedient to facilitate drainage from any source.
 - Building setback requirements are as stated in the zoning and/or platting regulations.
 - Utility and other Drainage Easements - 4' on the interior side of all front, side and rear lot lines.
 - Total Right-of-Way delineated by this plat: 188'11.91' ±, 0.32± acres.
 - Scale of Boundary Survey bearing of S 88°02'30" E, the south lot line of Lot 20 of Block 1, as shown on the plat of Park Meadows Subdivision in plat book 31, page 69.
 - Plat is subject to SDCL 8-3-8.1 and 8-3-2. The Developer of the property described within this Plat shall be responsible for protecting any waters of the State, including groundwater, located adjacent to or within such platted area from pollution from sewage from such subdivision and shall in prosecution of such protection conform to and follow all regulations of the state of South Dakota Department of Environment and Natural Resources relating to the same.



DESIGNED BY: _____
 DRAWN BY: _____
 CHECKED BY: _____
 APPROVED BY: _____
 DATE: 12/28/05

PRELIMINARY PLAT

PROJECT DESCRIPTION:
 LOTS 8, 9, 10, 11, AND 12 OF BLOCK 1, PARK HILL SUBDIVISION FORMERLY TRACT B, PARK HILL SUBDIVISION FORMERLY TRACT B OF THE NW1/4 OF SE1/4 OF SECTION 7, T1N, R8E, B.H.M. SOUTH DAKOTA

1830 West Fulken Street
 Rapid City, SD 57702
 Phone: (605) 541-1764
 Fax: (605) 541-1764
 celec@celec-engineers.com