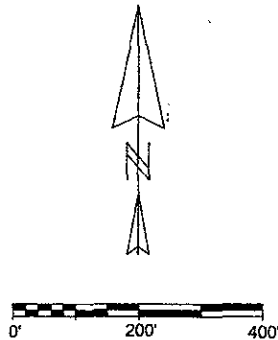
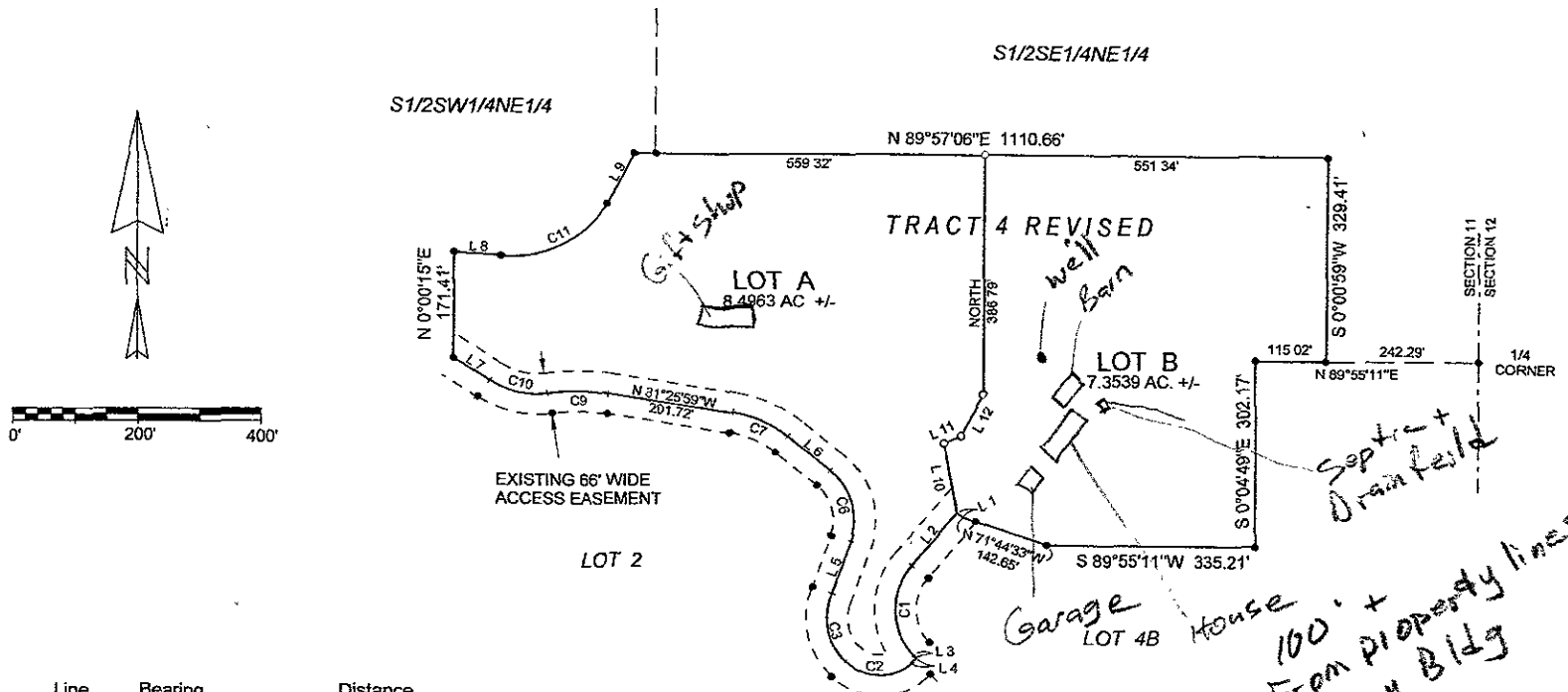


RECEIVED

DEC 7 2005

Rapid City Growth
Management Department

LOTS A AND B OF TRACT 4 REVISED IN CAVERN CREST SUBDIVISION
LOCATED IN SE1/4NE1/4 AND NE1/4SE1/4 OF SECTION 11, T1N, R6E, B.H.M.
PENNINGTON COUNTY, SOUTH DAKOTA



Line	Bearing	Distance
1	N 54°37'33.0"W	11.46'
2	S 40°20'51.0"W	111.65'
3	S 43°19'25.0"E	4.19'
4	S 46°40'35.0"W	11.22'
5	N 19°38'34.0"E	94.42'
6	N 51°02'09.0"W	84.54'
7	N 57°02'45.0"W	68.40'
8	S 84°45'53.0"E	74.96'
9	N 28°56'40.8"E	80.68'
10	N 10°37'24"W	115.77'
11	N 66°17'25.7"E	29.94'
12	N 28°49'12"E	77.39'

Septic + Drain field

Garage

House

100' + From property lines to any Bldg

Prepared by
Hanson Surveying & Mapping
832 Horace Mann Drive
Rapid City, SD 57701
(605) 388-9652

Date: Oct. 27, 2005