

RECEIVED

DEC 30 2005

Rapid City Growth Management Department

PRELIMINARY PLAT OF
 LOTS 8, 9, 10, 11, AND 12 OF BLOCK 1,
 AND DEDICATED PUBLIC RIGHT-OF-WAY OF PARK HILL SUBDIVISION
 FORMERLY TRACT B OF THE NW1/4 SE1/4 OF SECTION 7, T1N, R8E
 LOCATED IN THE NW1/4 OF SE1/4, SECTION 7, T1N, R8E, B.H.M.,
 RAPID CITY, PENNINGTON COUNTY, SOUTH DAKOTA



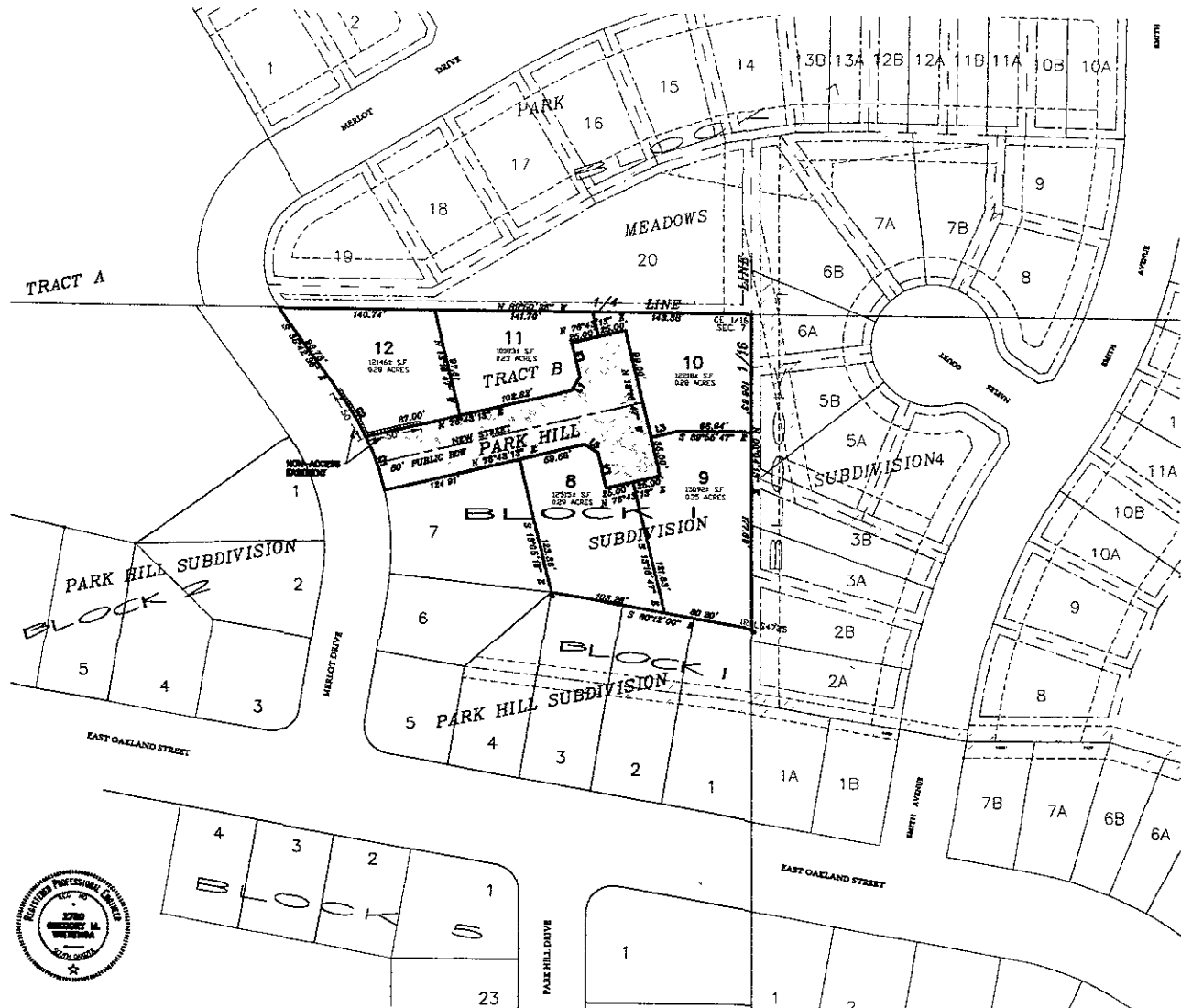
LINK	BEARING	DISTANCE
L1	S 37°29'13" W	14.14'
L2	N 13°16'47" W	32.00'
L3	N 7°43'15" E	23.00'
L4	N 13°16'47" W	32.00'
L5	S 86°16'47" E	14.14'

CURVE	RADIUS	ARC LENGTH	DELTA ANGLE
C1	282.01'	80.36'	162.63°
C2	282.01'	40.87'	100.75°

- EXISTING MAJOR DRAINAGE EASEMENT
- DEDICATED RIGHT-OF-WAY

NOTES:

- All major drainage easements shown herein shall be kept free of all obstructions including but not limited to buildings, walls, fences, hedges, trees and shrubs. These easements grant in all public authorities the right to construct, operate, maintain, inspect and repair such improvements and structures as it deems essential to facilitate drainage from any source.
- Building setback requirements are as stated in the zoning and/or planning regulations.
- Utility and Other Drainage Easements - "F" on the interior side of all front, side and rear lot lines.
- Total right-of-way delineated by this plat 19851.91 S.F., 0.356 acres.
- Books of Recording Passed bearing of S 80°57'24" E, the north lot line of Lot 20 of Block 1, as shown on the plat of Park Hill Subdivision in plat book 37, page 68.
- Pursuant to SDCL 3-3-6.1 and 3-3-6.2, The Developer of the property described within this Plat shall be responsible for providing any notices of the State, including construction, bonded adjacent to or within such platted area from pollution from sewage from such subdivisions and shall in prosecution of such protection continue to and follow all regulations of the state of South Dakota Department of Environment and Natural Resources relating to the same.



1630 West Edison Street
 Rapid City, SD 57102
 Phone: (605) 341-7800
 Fax: (605) 341-7800
 www.cedec.com

DESIGNED BY: []
 CHECKED BY: []
 DRAWN BY: []
 APPROVED BY: []
 DATE: 12/28/05

CEDEC ENGINEERING SERVICES, INC.

PROJECT DESCRIPTION: PRELIMINARY PLAT

PLAT 2005-016

LOTS 8, 9, 10, 11, AND 12 OF BLOCK 1, AND DEDICATED PUBLIC RIGHT-OF-WAY OF PARK HILL SUBDIVISION FORMERLY TRACT B OF THE NW1/4 SE1/4 OF SECTION 7, T1N, R8E, B.H.M., RAPID CITY, SOUTH DAKOTA