

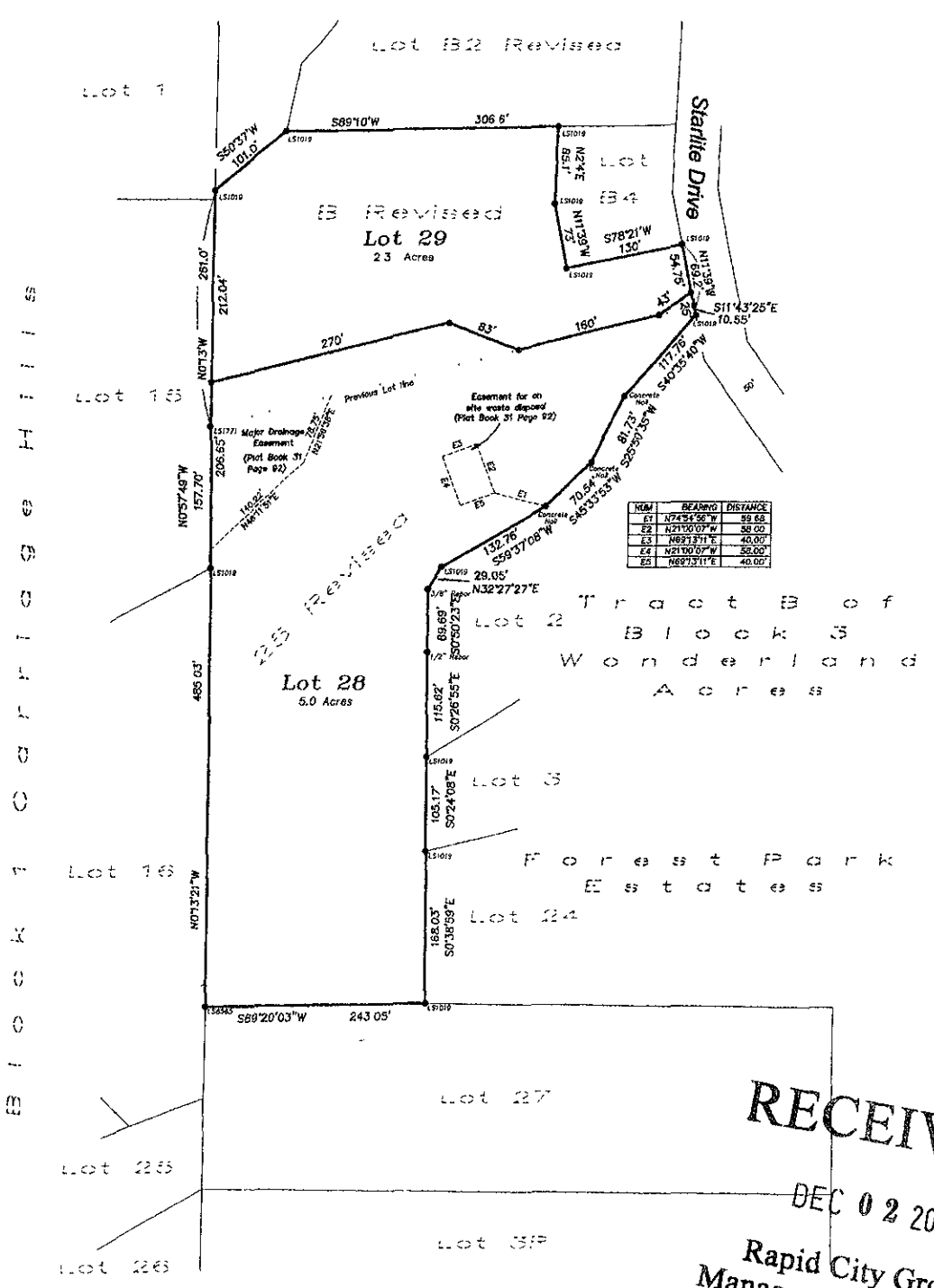
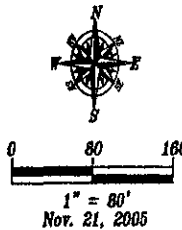
# Plat of Lots 28 & 29 of Forest Park Estates

Formerly all of Lot 25 R of Forest Park Estates and all of Lot B Revised of the E1/2 SW1/4 of Section 16, T1N, R7E  
All in Section 16, T1N, R7E, BHM  
Rapid City, Pennington County, South Dakota

Prepared by:  
Fisk Land Surveying  
& Consulting Engineers, Inc  
P.O. Box 8154  
Rapid City, SD 57709  
Project # 97-10-01

All major drainage easements shown hereon shall be kept free of all obstructions including but not limited to buildings, walls, fences, hedges, trees & shrubs, these easements grant to all public authorities the right to construct, operate, maintain, inspect, and repair such improvements and structures as it deems expedient to facilitate drainage from any source.

Utility and minor drainage easements 8' on the interior side of all lot lines



NUM	BEARING	DISTANCE
E1	N74°54'36"W	89.68
E2	N21°00'07"W	50.00
E3	N62°13'11"E	40.00
E4	N21°00'07"W	50.00
E5	N62°13'11"E	40.00

**RECEIVED**  
DEC 02 2005  
Rapid City Growth  
Management Department