

05PL244

PLAT OF BLACK HILLS CENTER

LOTS 2A & 2B, BLOCK 1
FORMERLY LOT 2, BLOCK 1

LOCATED IN THE SW1/4NE1/4 AND THE SE1/4NW1/4 OF SECTION 24,
T.1N., R.7E., B.H.M., RAPID CITY, PENNINGTON COUNTY, SOUTH DAKOTA



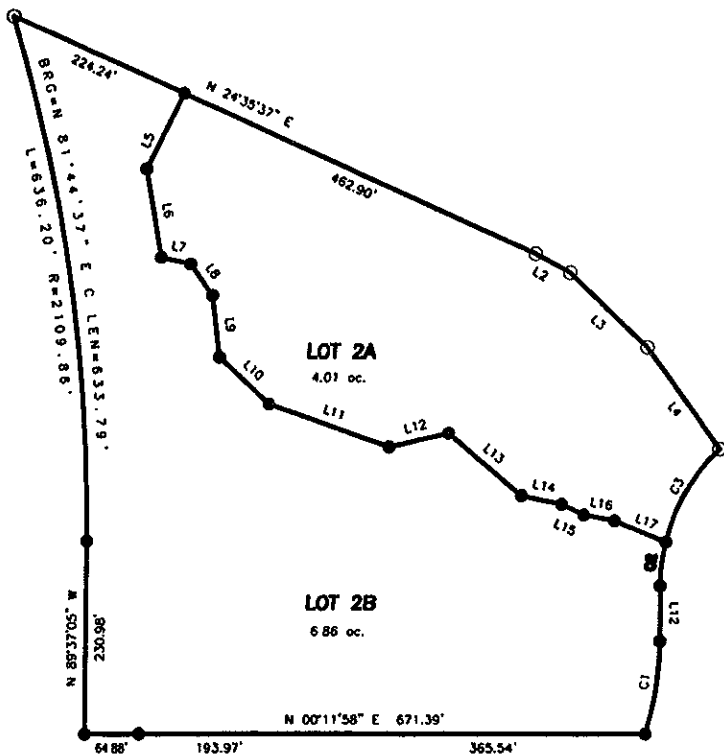
Scale 1 Inch = 100 Feet

LEGEND

- Denotes set 5/8" rebar with survey cap marked "ARLETH 3977"
- Denotes Found Survey Monument

NOTES:

1. MAJOR DRAINAGE AND UTILITY EASEMENTS ARE HEREBY ESTABLISHED 8' WIDE ON THE INTERIOR SIDE OF ALL LOT LINES AND RIGHT-OF-WAY (EXCEPT WHERE MAJOR DRAINAGE EASEMENTS ARE LOCATED)
2. TOTAL PLATTED AREA: 10.87 ACRES; LOTS: 10.87 ACRES;
3. ANY MAJOR DRAINAGE EASEMENT SHOWN HEREON SHALL BE KEPT FREE OF ALL OBSTRUCTIONS INCLUDING BUT NOT LIMITED TO BUILDINGS, WALLS, FENCES, HEDGES, TREES, AND SHRUBS. THESE EASEMENTS GRANT TO ALL PUBLIC AUTHORITIES THE RIGHT TO CONSTRUCT, OPERATE, MAINTAIN, INSPECT AND REPAIR SUCH IMPROVEMENTS AND STRUCTURES AS IT SEEMS EXPEDIENT TO FACILITATE DRAINAGE FROM ANY SOURCE.
4. NON-ACCESS EASEMENTS ARE HEREBY ESTABLISHED ALONG THE FIRST FIFTY FEET OF CORNER LOTS OR AS INDICATED HEREON.
5. ALL BUILDERS SHALL MAINTAIN EXISTING DRAINAGE FACILITIES IN ACCORDANCE TO APPROVED CONSTRUCTION PLANS. (RAPID CITY ENGINEERING DIVISION REQUESTED NOTE)
6. ACREAGE SHOWN ON LOTS INCLUDE EASEMENTS.



LINE	Bearing	DISTANCE
L1	N 20°34'18\"	47.17'
L2	N 43°31'02\"	120.20'
L3	N 54°30'05\"	112.50'
L4	S 43°30'04\"	100.49'
L5	S 40°28'22\"	108.97'
L6	N 12°50'43\"	26.71'
L7	N 54°30'01\"	48.11'
L8	N 83°20'00\"	78.20'
L9	N 43°30'19\"	69.25'
L10	N 12°50'30\"	159.69'
L11	N 12°50'35\"	72.68'
L12	N 40°28'22\"	111.60'
L13	S 12°19'24\"	49.52'
L14	S 25°08'28\"	20.30'
L15	S 10°46'57\"	23.00'
L16	N 22°17'40\"	65.24'

CURVE	BEARING	ARC LENGTH	CHORD LENGTH	CHORD BEARING
C1	374.00'	113.87'	111.54'	S 81°20'41\"
C2	282.00'	53.11'	53.99'	N 67°12'27\"
C3	282.00'	129.72'	127.91'	N 59°49'29\"

RECEIVED

DEC 09 2005

Rapid City Growth
Management Department



PREPARED BY:
ARLETH & ASSOCIATES

25 KIRK ROAD
DEADWOOD, SD 57732
605-578-1637

JOB NO.
7116

DATE: DECEMBER 6, 2005
SCALE: 1" = 100'
REVISED: 12/07/05

APPROVED: JMA

DWG: 7116PLAT.DWG

PREPARED FOR:
DEAN DESIGN INTERNATIONAL, INC.
528 KANSAS CITY STREET, SUITE 1
RAPID CITY, SOUTH DAKOTA 57701
(605) 348-6550