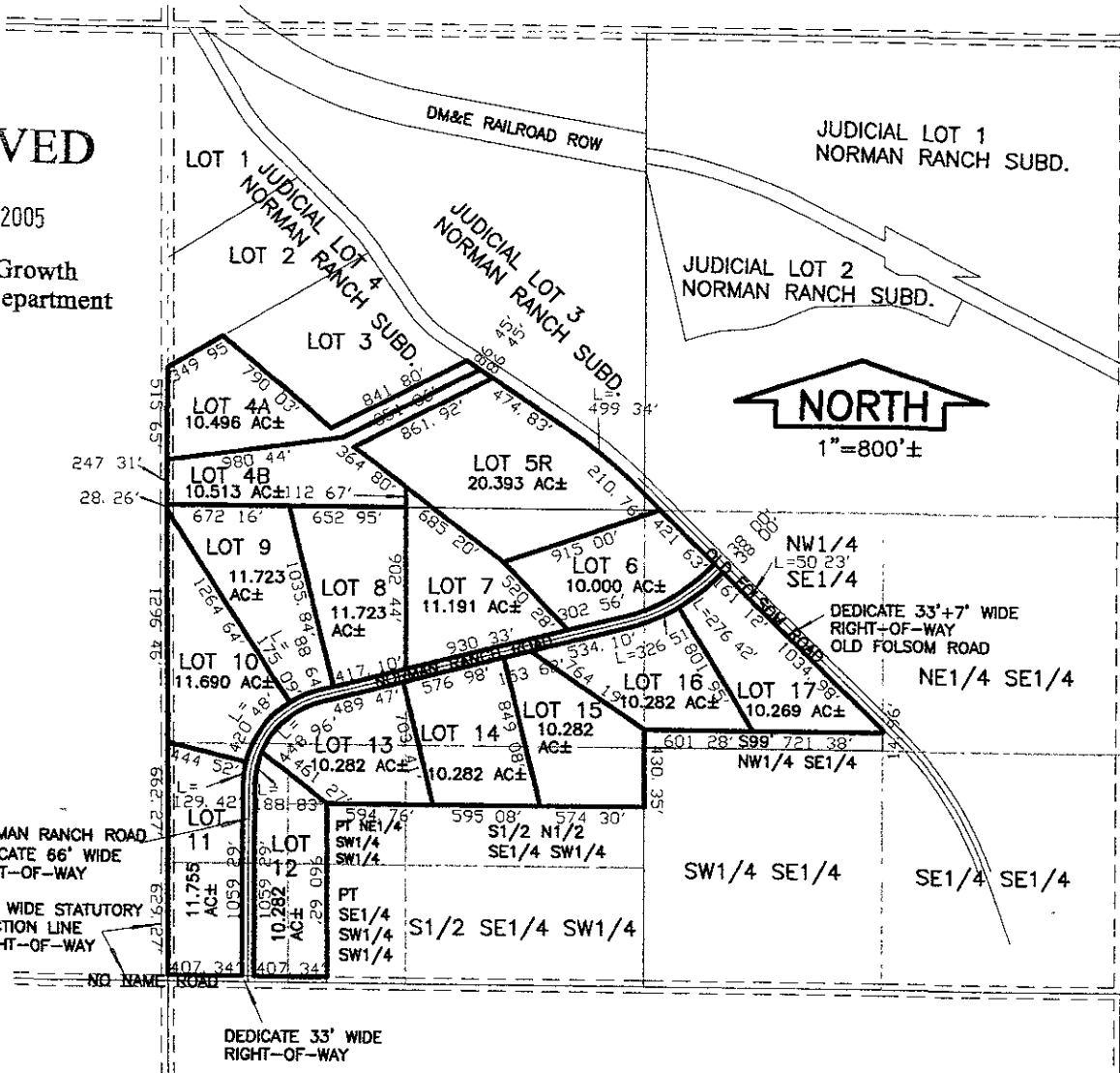


RECEIVED

DEC 09 2005

Rapid City Growth Management Department



PLAT OF
 LOT 4A, LOT 4B, AND LOT
 5R OF JUDICIAL LOT 4,
 AND LOTS 6 THROUGH 17,
 NORMAN RANCH
 SUBDIVISION

JUDICIAL LOT 1
 NORMAN RANCH SUBD.

JUDICIAL LOT 2
 NORMAN RANCH SUBD.



(FORMERLY LOT 4 AND LOT
 5 OF JUDICIAL LOT 4
 OF NORMAN RANCH
 SUBDIVISION);
 THE N1/2 SW1/4; THE
 NW1/4 SE1/4 LYING
 SOUTHWEST OF
 OLD FOLSOM ROAD LESS
 THE SOUTH 99' OF NW1/4
 SE1/4;
 THE N1/2 N1/2 SE1/4
 SW1/4; THE W1/2 SW1/4
 SW1/4;
 THE N1/2 NE1/4 SW1/4
 SW1/4; THE WEST 220'
 OF
 S1/2 NE1/4 SW1/4 SW1/4;
 AND THE WEST 220'
 OF
 SE1/4 SW1/4 SW1/4; ALL
 IN SECTION 28)

LOCATED IN THE S1/2
 NW1/4; SW1/4 NE1/4;
 NW1/4 SE1/4; AND IN THE
 SW1/4;
 SECTION 28, T1N, R8E,
 B. H. M.,
 PENNINGTON COUNTY,
 SOUTH DAKOTA.

UTILITY AND MINOR
 DRAINAGE EASEMENTS; 8'
 ON THE INTERIOR SIDES
 OF ALL LOT LINES.

NORMAN RANCH ROAD
 DEDICATE 66' WIDE
 RIGHT-OF-WAY

66' WIDE STATUTORY
 SECTION LINE
 RIGHT-OF-WAY

DEDICATE 33' WIDE
 RIGHT-OF-WAY