

EXHIBIT "A"

Vacation of Section Line Right-of-Way

located in

Tract B in SE1/4 SW1/4 of Section 31, T2N, R8E, BHM,
 Lot 2 of Eastbrooke Subd. in Section 31, T2N, R8E and Section 6, T1N, R8E BHM &
 Lots 1, 3 & 21, including vacated alley adjoined to Lots 1 & 3, of Block 1 of
 Brennan & Sweeney Addn. in Section 6, T1N, R8E, BHM,
 and in Racine Street adjoined thereto, Rapid City, Pennington County, South Dakota

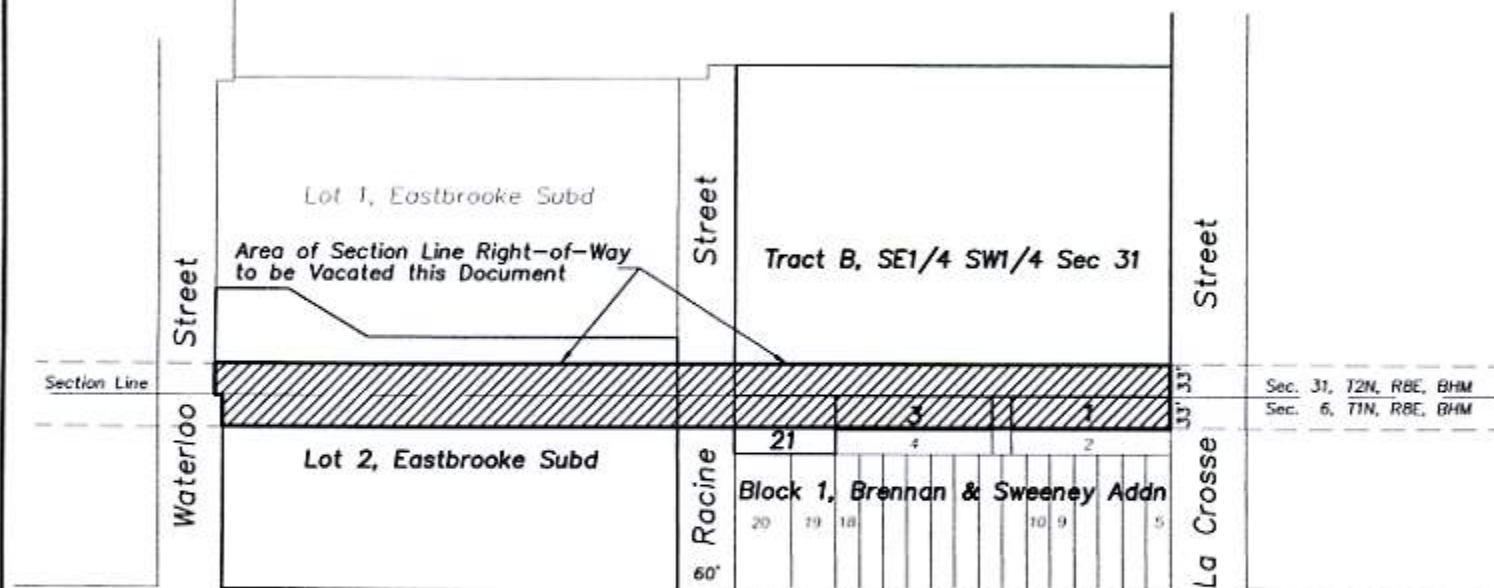


1" = 200'
 Aug. 11, 2005
 Revised Oct. 20, 2005

Notes:

Vacation of Section Line Right-of-Way in Racine Street does not nullify the Right-of-Way dedication as shown on the original plat.

Vacation of Section Line Right-of-Way, as shown hereon, does not alter or nullify existing utility or drainage easements of record.



RECEIVED

OCT 21 2005

Rapid City Growth
 Management Department