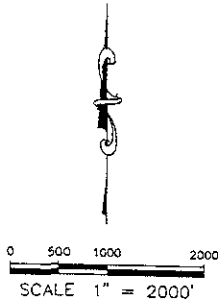


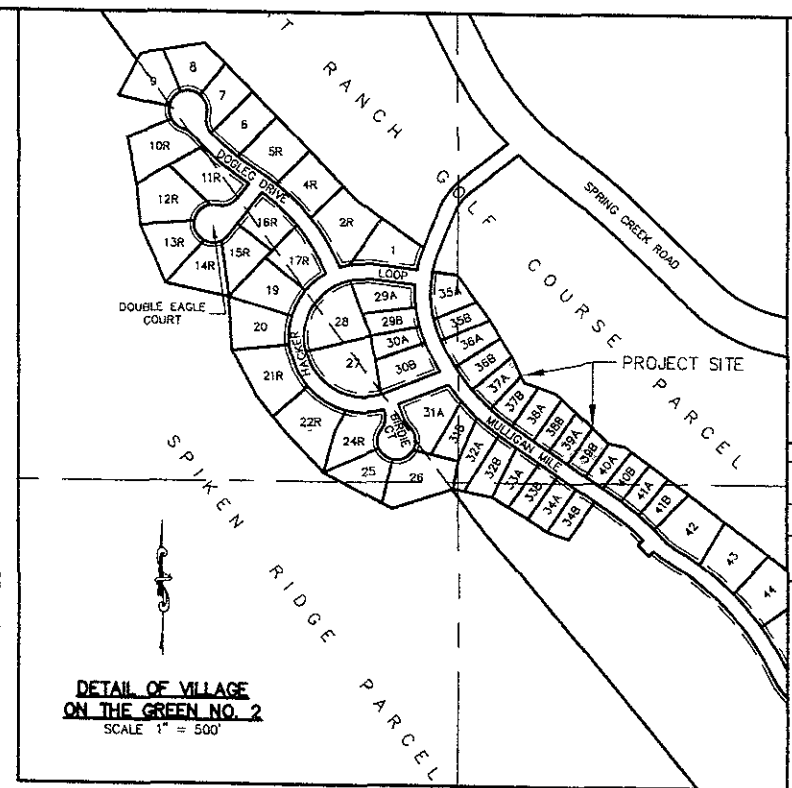
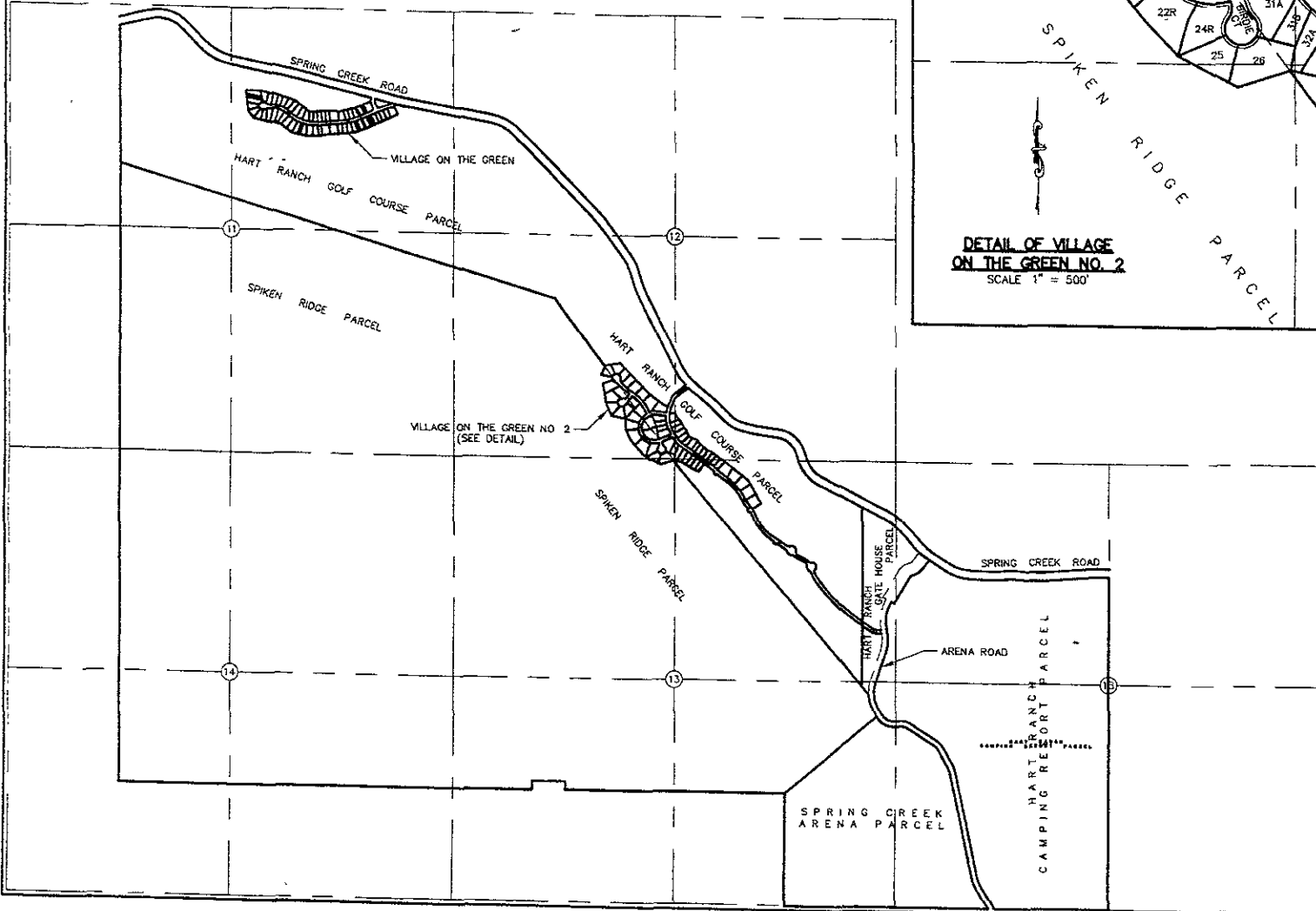
05SV074



RECEIVED

OCT 26 2005

Rapid City Growth
Management Department



F M G, Inc.
 3700 Sturgis Road
 Rapid City, SD 57702-0317
 (605) 342-4105 FAX (605) 342-4222



PAO File No. 517323
 Location: SHELZ, 2E1/4 SEC. 13, T15, R25, B10
 Surveyed By: _____
 Drawn By: _____
 Checked By: _____

LOTS 37A, 37B, 39A & 39B OF VILLAGE
 ON THE GREEN NO. 2 SUBDIVISION
 PENNINGTON COUNTY, SOUTH DAKOTA

Revision / Date	
Sheet Name	VICINITY MAP
Sheet Number	1
Total Sheets	1

OCTOBER 2005