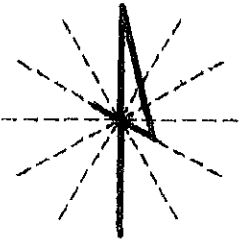


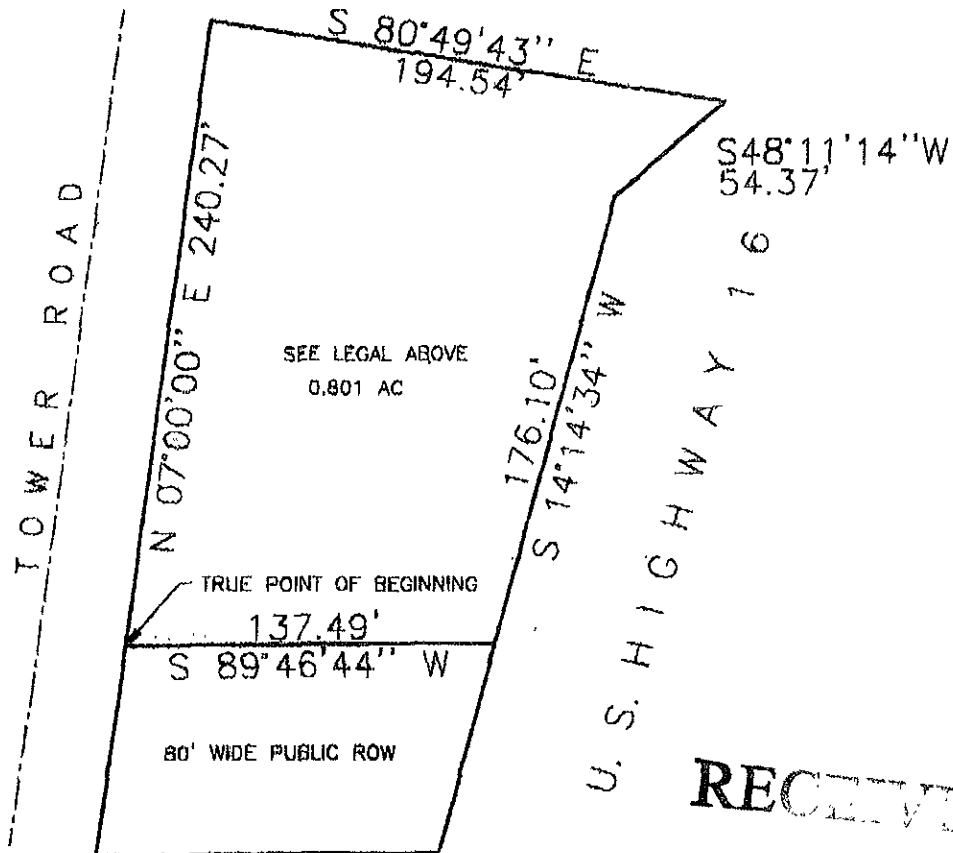
# EXHIBIT A -- METES AND BOUNDS DESCRIPTION

**LEGAL DESCRIPTION:** THAT PART OF LOT D OF LOT C OF THE NE1/4 OF THE SW1/4 OF SECTION 14, T1N, R7E, BHM., LYING WEST OF THE HIGHWAY  
05RZ059



DATE: OCT 28, 2005

SCALE: NOT TO SCALE



**RECEIVED**

OCT 28 2005

Rapid City Growth  
Management Department



METES AND BOUNDS DESCRIPTION FOR REZONING