

PLAT OF LOTS 1 AND 2 OF M AND B SUBDIVISION AND DEDICATED R.O.W.

Formerly all of the N1/2 E1/2 of Lot 1 of the NE1/4 NE1/4, less Lot H-1 and the S1/2 E1/2 of Lot 1 of the NE 1/4 NE1/4, less Lot D of Ted Subdivision

Located in the NE1/4 NE1/4 of Section 28, T1N, R7E, BHM, Rapid City, Pennington County, South Dakota

Prepared by:
Flak Land Surveying & Consulting Engineers, Inc.
 P.O. Box 8164
 Rapid City, SD 57709
 (605) 948-1638
 Project # 05-09-10

8' Utility and Minor Drainage Easements on the interior sides of all lot lines

All major drainage easements shown hereon shall be kept free of all obstructions including but not limited to buildings walls, fences, hedges, trees & shrubs. These easements grant to oil public authorities the right to construct, operate, maintain, inspect, and repair such improvements and structures as it deems expedient to facilitate drainage from any source.

EASEMENT NOTES

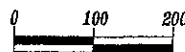
NOTE 1 - Black Hills Corp ROW Easement Bk 48 Page 5132 - N1/2 E1/2 of Lot 1 Width Not Specified

NOTE 2 - Black Hills Corp ROW Permit Bk 58 Page 8045 - N1/2 E1/2 of Lot 1 Route Not Geometrically Specified

NOTE 3 - 20' Wide Utility Easement for overhead lines - created this document. Annotations to centerline - tied to Sec. Line ROW but termination shall be the South Boundary of ROW from Note 1.

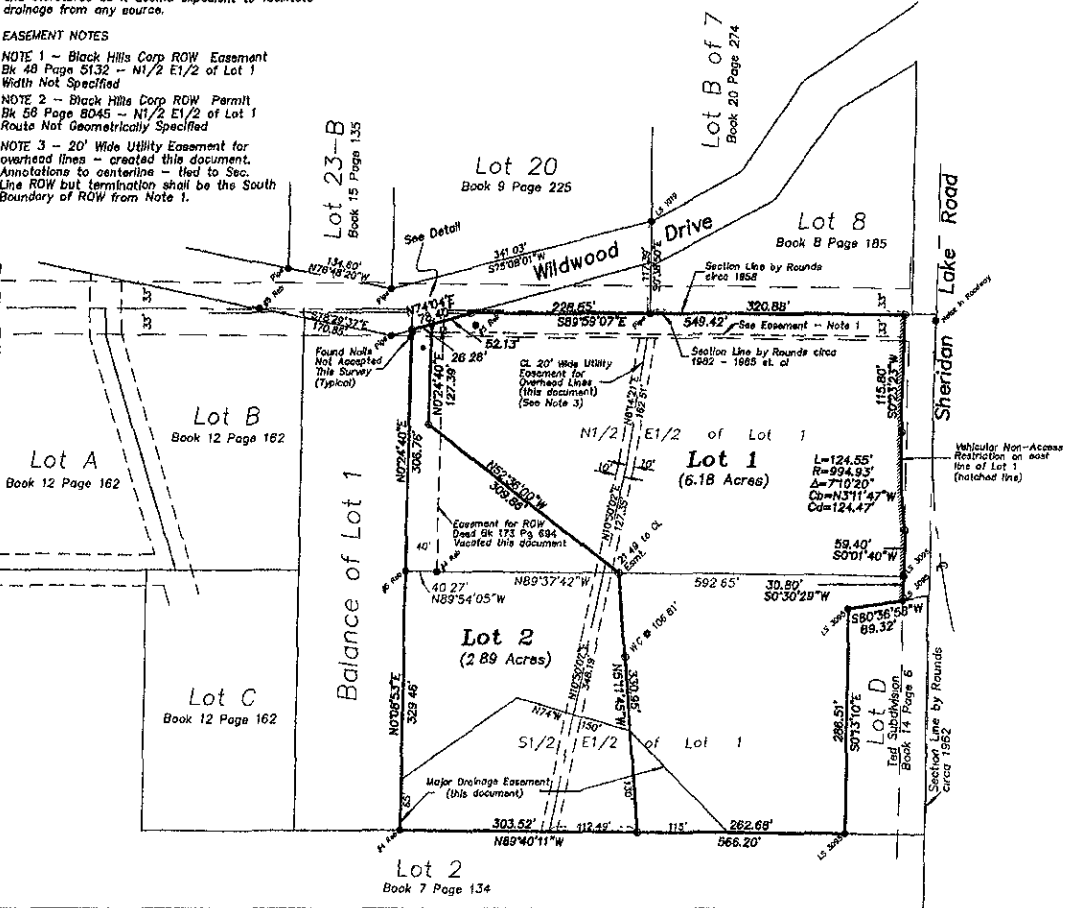
LEGEND

- = Found survey monument as noted
- = Found 10" Spike
- = Set 5/8" Rebar with cap marked "LS 6565"
- = Measured this survey
- = Basis of Bearings = Solar Observation



1" = 100'
 Oct. 14, 2005

That portion of Wildwood Drive containing 810 S.F. as shown hereon is hereby dedicated as Public Right-of-Way however such dedication shall not be construed to mean a donation of the fee of said land



DETAIL

