

PLAT OF  
LOTS 8 THROUGH 12 OF BLOCK 8, LOTS 5 THROUGH 9 OF BLOCK 9,  
LOTS 17 THROUGH 23 OF BLOCK 10, LOTS 13 THROUGH 18 OF BLOCK 11,  
AND LOTS 5 THROUGH 10 OF BLOCK 13,  
ELKS COUNTRY ESTATES

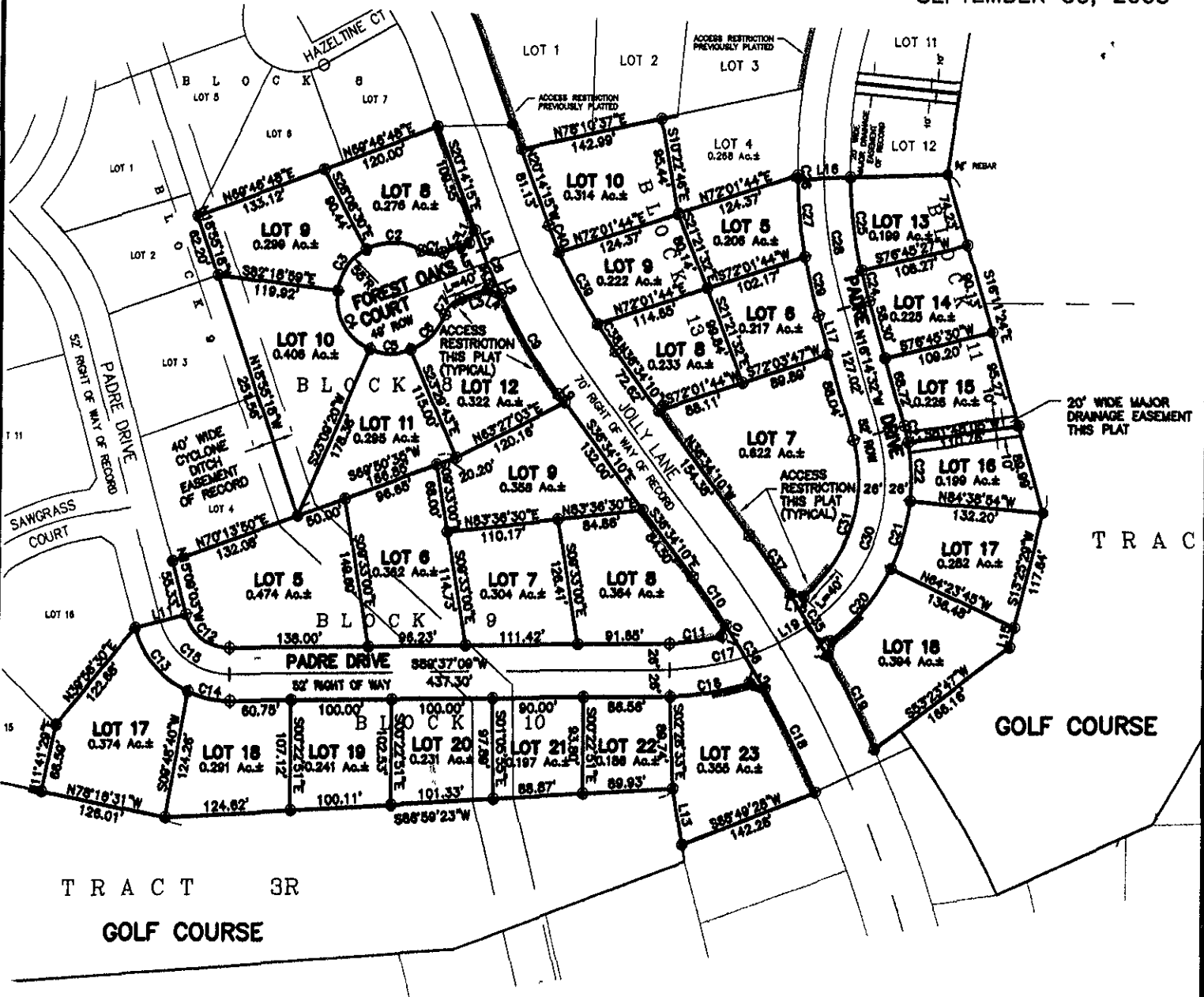
(FORMERLY A PORTION OF TRACT 1 OF THE E 1/2 OF SECTION 16, T1N, R8E, B.H.M.)  
LOCATED IN THE SE 1/4 OF THE SE 1/4,  
SECTION 16, T1N, R8E, B.H.M.,  
RAPID CITY, PENNINGTON COUNTY, SOUTH DAKOTA

RECEIVED

SEP 28 2005

Rapid City Growth  
Management Department

NO SCALE  
SEPTEMBER 30, 2005



C:\DRAWINGS\1260-YR2000\PLATSH-T-PADRE.DWG. 8x11, 9/27/2005 8:15:14 AM