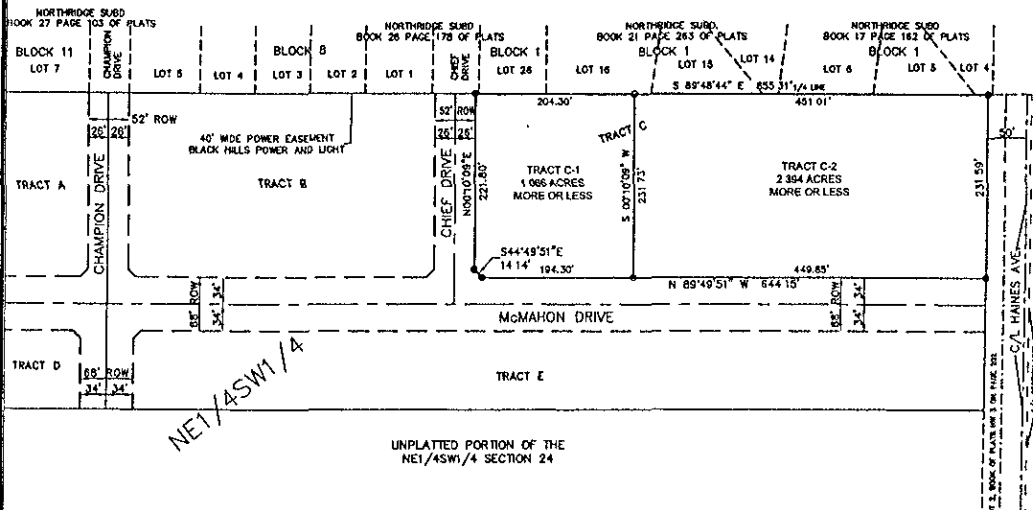


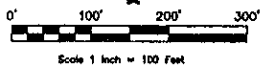
**PLAT OF MCMAHON SUBDIVISION
TRACT C-1 AND TRACT C-2
FORMERLY TRACT C OF THE MCMAHON SUBDIVISION
LOCATED IN THE NE1/4SW1/4 OF SECTION 24, T2N, R7E, B.H.M., CITY OF RAPID CITY,
PENNINGTON COUNTY, SOUTH DAKOTA**



RECEIVED

OCT 14 2005

**Rapid City Growth
Management Department**



Scale 1 inch = 100 Feet

LEGEND

- Denotes set 5/8" rebar with survey cap marked "ARLETH 3977"
- Denotes Found Survey Monument

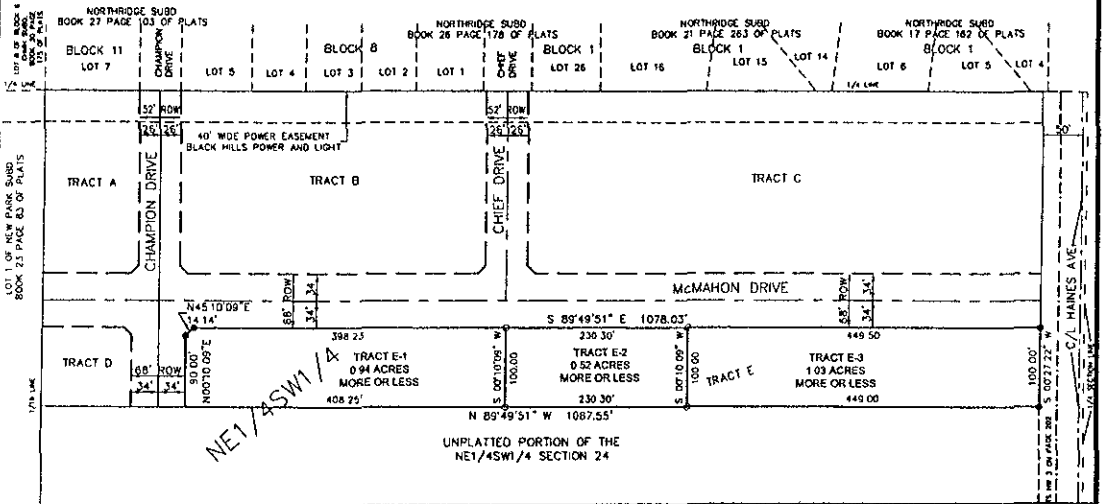
NOTES

1. MINOR DRAINAGE AND UTILITY EASEMENTS ARE HEREBY ESTABLISHED BY DEED ON THE INTERIOR SIDE OF ALL LOT LINES AND RIGHT-OF-WAY (EXCEPT WHERE MAJOR DRAINAGE EASEMENTS ARE LOCATED)
2. TOTAL PLATTED AREA: 3.48 ACRES;
LOTS: 3.48 ACRES
3. ANY MAJOR DRAINAGE EASEMENT SHOWN HEREON SHALL BE KEPT FREE OF ALL OBSTRUCTIONS INCLUDING BUT NOT LIMITED TO BUILDINGS, WALLS, FENCES, HEDGES, TREES, AND SHRUBS. THESE EASEMENTS GRANT TO ALL PUBLIC AUTHORITIES THE RIGHT TO CONSTRUCT, OPERATE, MAINTAIN, INSPECT AND REPAIR SUCH IMPROVEMENTS AND STRUCTURES AS IT DEEMS EXPEDIENT TO FACILITATE DRAINAGE FROM ANY SOURCE.
4. NON-ACCESS EASEMENTS ARE HEREBY ESTABLISHED ALONG THE FIRST FIFTY FEET OF CORNER LOTS OR AS INDICATED HEREON.
5. ACREAGE SHOWN ON LOTS INCLUDE EASEMENTS.

05RZ056

PLAT OF MCMAHON SUBDIVISION
TRACT E-1, TRACT E-2 AND TRACT E-3
FORMERLY TRACT E OF MCMAHON SUBDIVISION

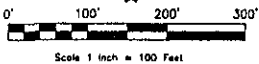
LOCATED IN THE NE1/4SW1/4 OF SECTION 24, T2N, R7E, B.H.M., CITY OF RAPID CITY,
PENNINGTON COUNTY, SOUTH DAKOTA



RECEIVED

OCT 14 2005

Rapid City Growth
Management Department



LEGEND

- Denotes set 5/8" rebar with survey cap marked "ARLETH 3977"
- ⊕ Denotes Found Survey Monument

NOTES

- MINOR DRAINAGE AND UTILITY EASEMENTS ARE HEREBY ESTABLISHED 8' WIDE ON THE INTERIOR SIDE OF ALL LOT LINES AND RIGHT-OF-WAY (EXCEPT WHERE MAJOR DRAINAGE EASEMENTS ARE LOCATED)
- TOTAL PLATTED AREA: 11.64 ACRES;
LOTS: 8.94 ACRES;
DEDICATED R.O.W.: 2.70 ACRES;
- ANY MAJOR DRAINAGE EASEMENT SHOWN HEREON SHALL BE KEPT FREE OF ALL OBSTRUCTIONS INCLUDING BUT NOT LIMITED TO BUILDINGS, WALLS, FENCES, HEDGES, TREES, AND SHRUBS. THESE EASEMENTS GRANT TO ALL PUBLIC AUTHORITIES THE RIGHT TO CONSTRUCT, OPERATE, MAINTAIN, INSPECT AND REPAIR SUCH IMPROVEMENTS AND STRUCTURES AS IT DEEMS EXPEDIENT TO FACILITATE DRAINAGE FROM ANY SOURCE
- NON-ACCESS EASEMENTS ARE HEREBY ESTABLISHED ALONG THE FIRST FIFTY FEET OF CORNER LOTS OR AS INDICATED HEREON.
- ACREAGE SHOWN ON LOTS INCLUDE EASEMENTS.

Prepared for:

Dream Design International, Inc
528 Kansas City Street, Suite 4
Rapid City, SD 57701