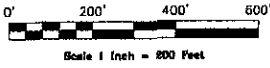


PLAT OF BLACK HILLS CENTER

LOTS 1 THRU 4, BLOCK 1; LOTS 1 THRU 8, BLOCK 2;
LOTS 1 THRU 5, BLOCK 3 AND DEDICATED PUBLIC ROAD
LOCATED IN THE SW1/4NE1/4 AND THE SE1/4NE1/4 OF SECTION 24,
T.1N., R.7E., B.H.M., RAPID CITY, PENNINGTON COUNTY, SOUTH DAKOTA



LEGEND

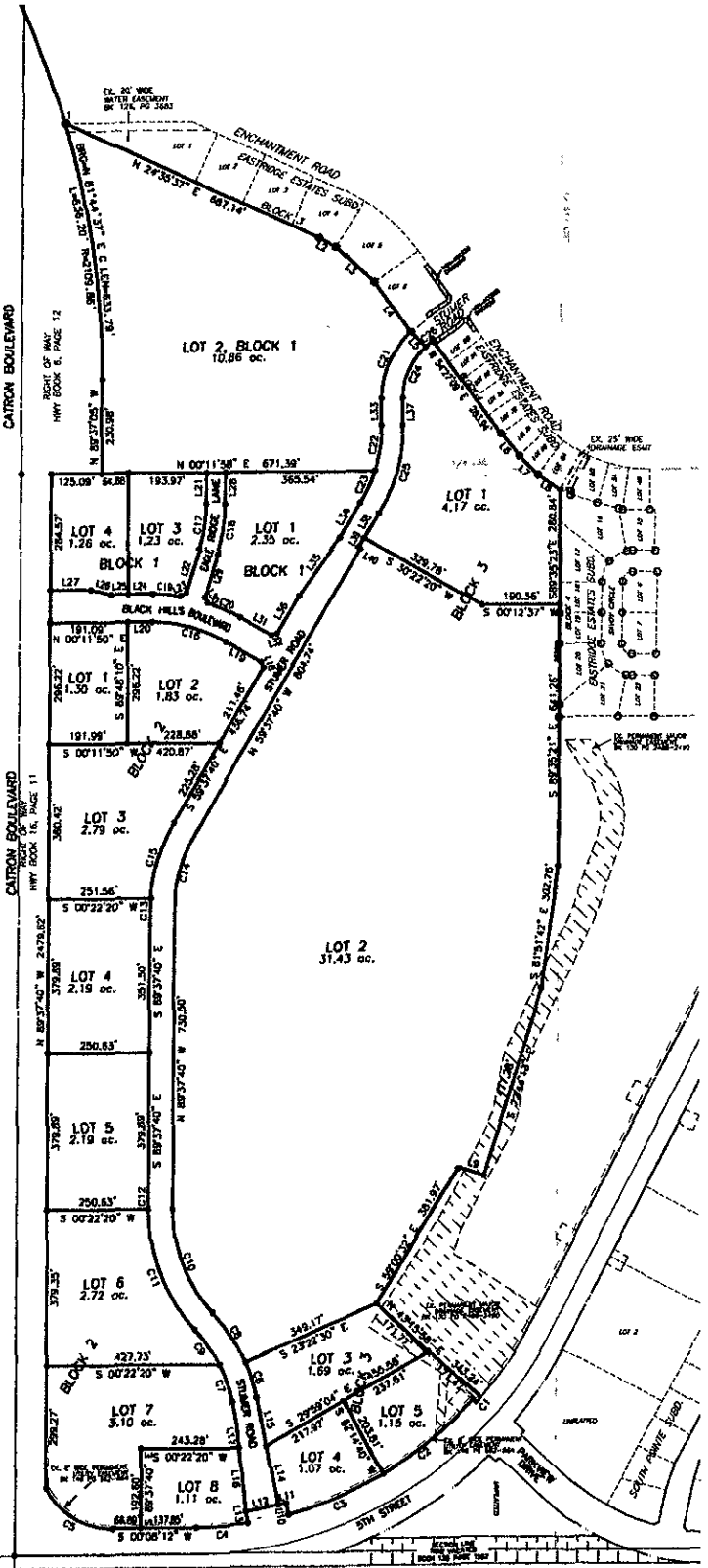
- Denotes set 5/8" rebar with survey cap marked "ARLETH 3977"
- Denotes Found Survey Monument

NOTES:

1. MAJOR DRAINAGE AND UTILITY EASEMENTS ARE HEREBY ESTABLISHED 8' WIDE ON THE INTERIOR SIDE OF ALL LOT LINES AND RIGHT-OF-WAY (EXCEPT WHERE MAJOR DRAINAGE EASEMENTS ARE LOCATED)
2. TOTAL PLATTED AREA: 77.59 ACRES;
LOTS: 72.44 ACRES;
DEDICATED PUBLIC RIGHT-OF-WAY: 5.15 ACRES.
3. ANY MAJOR DRAINAGE EASEMENT SHOWN HEREON SHALL BE KEPT FREE OF ALL OBSTRUCTIONS INCLUDING BUT NOT LIMITED TO BUILDINGS, WALLS, FENCES, HEDGES, TREES, AND SHRUBS. THESE EASEMENTS GRANT TO ALL PUBLIC AUTHORITIES THE RIGHT TO CONSTRUCT, OPERATE, MAINTAIN, RESPECT AND REPAIR SUCH IMPROVEMENTS AND STRUCTURES AS IT DEEMS EXPEDIENT TO FACILITATE DRAINAGE FROM ANY SOURCE.
4. NON-ACCESS EASEMENTS ARE HEREBY ESTABLISHED ALONG THE FIRST FIFTY FEET OF CORNER LOTS OR AS INDICATED HEREON.
5. ALL BUILDERS SHALL MAINTAIN EXISTING DRAINAGE FACILITIES IN ACCORDANCE TO APPROVED CONSTRUCTION PLANS. (RAPID CITY ENGINEERING DIVISION REQUESTED NOTE)
6. ACREAGE SHOWN ON LOTS INCLUDE EASEMENTS.

LINE	BEARING	DISTANCE
L1	N 00°09'34" E	1.06
L2	N 28°34'18" E	47.17
L3	N 43°17'12" E	128.30
L4	S 42°30'09" E	128.30
L5	N 42°43'58" E	50.00
L6	N 51°04'28" E	68.64
L7	N 48°12'00" E	85.81
L8	N 35°42'25" E	96.69
L9	N 17°18'14" E	65.48
L10	S 78°54'18" W	37.78
L11	S 11°12'42" E	20.03
L12	S 11°14'42" E	79.87
L13	N 78°24'42" E	73.07
L14	N 78°24'30" W	145.86
L15	S 78°24'30" W	129.33
L16	S 04°11'29" W	184.03
L17	S 82°11'29" W	52.90
L18	N 78°24'30" E	145.86
L19	N 78°24'30" E	99.78
L20	N 00°11'50" E	81.35
L21	S 88°48'10" E	78.81
L22	S 77°48'18" E	111.68
L23	S 27°48'18" E	17.80
L24	S 00°11'50" W	81.35
L25	S 00°11'50" W	40.20
L26	S 18°42'14" W	91.30
L27	S 00°11'50" W	100.63
L28	S 88°48'10" E	78.81
L29	S 77°48'18" E	111.68
L30	S 27°48'18" E	17.80
L31	N 82°10'42" E	15.73
L32	N 30°22'20" E	87.70
L33	S 14°37'40" E	14.14
L34	N 80°37'40" E	64.18
L35	S 82°37'40" E	88.73
L36	S 82°37'40" E	175.28
L37	S 28°37'40" E	105.71
L38	N 80°00'00" E	86.10
L39	S 28°37'40" E	78.81
L40	S 28°37'40" E	48.70
L41	N 30°22'20" E	4.00

CURVE	RADIUS	ARC LENGTH	CHORD LENGTH	CHORD BEARING
C1	909.00	17.85	17.85	N 48°47'41" W
C2	897.00	273.28	273.18	N 38°47'41" W
C3	897.00	248.90	248.69	N 22°28'35" W
C4	897.00	128.24	128.13	N 03°57'33" W
C5	181.00	204.59	194.92	N 30°49'01" E
C6	430.00	81.20	81.03	N 72°40'17" E
C7	370.00	99.28	99.12	N 71°02'58" E
C8	430.00	148.29	143.59	N 58°20'57" E
C9	370.00	104.93	104.58	N 50°13'30" E
C10	370.00	378.42	292.83	S 68°44'15" W
C11	430.00	323.94	318.23	S 68°40'41" W
C12	430.00	26.41	26.40	S 69°58'51" W
C13	430.00	26.41	26.40	N 87°24'07" W
C14	370.00	193.73	181.83	N 74°37'40" W
C15	430.00	188.74	183.03	N 77°44'07" W
C16	386.00	182.78	180.54	N 80°17'05" W
C17	378.50	112.97	111.18	S 81°18'24" E
C18	430.00	122.90	122.90	S 81°18'24" E
C19	430.00	88.33	88.70	N 04°42'27" E
C20	430.00	88.33	88.31	N 24°13'58" E
C21	225.00	182.83	177.80	N 82°52'03" E
C22	374.00	112.97	112.24	S 81°20'41" E
C23	374.00	88.33	88.10	S 86°00'37" E
C24	172.00	140.39	134.59	N 68°37'03" E
C25	428.00	225.84	223.19	S 74°48'50" E
C26	172.00	23.06	23.06	N 39°23'27" W



PREPARED BY:
ARLETH & ASSOCIATES
25 KIRK ROAD
DEADWOOD, SD 57732
605-578-1637

JOB NO.
7118
DATE: OCTOBER 10, 2005
SCALE: 1" = 200'
REVISOR: OCTOBER 13, 2006

APPROVED: JMA
DWG: 7118PLAT.DWG

PREPARED FOR:
ERDMAN DESIGN INTERNATIONAL, INC.
624 KANSAS CITY STREET, SUITE 4
RAPID CITY, SOUTH DAKOTA 57701
(605) 340-0534