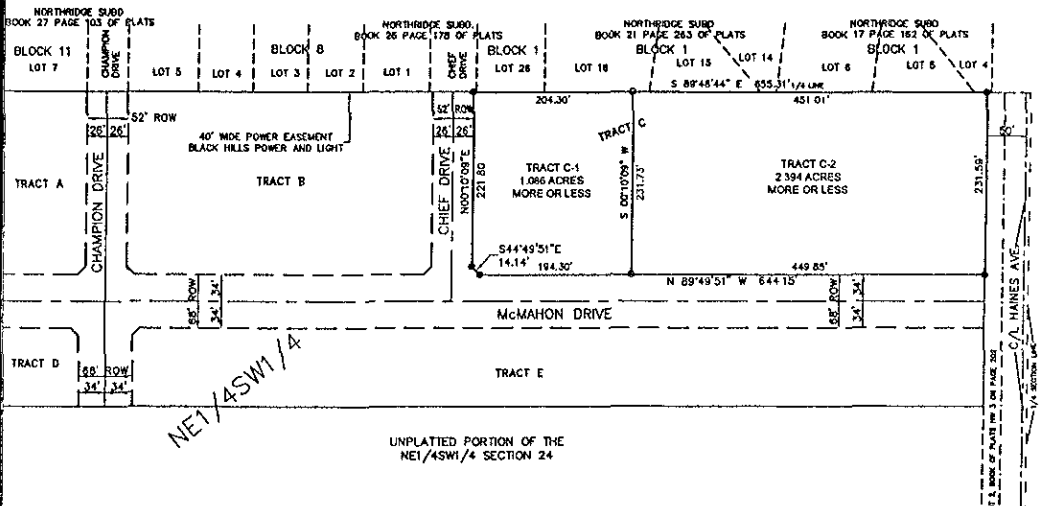


**PLAT OF MCMAHON SUBDIVISION**  
**TRACT C-1 AND TRACT C-2**  
**FORMERLY TRACT C OF THE MCMAHON SUBDIVISION**  
 LOCATED IN THE NE1/4SW1/4 OF SECTION 24, T2N, R7E, B.H.M., CITY OF RAPID CITY,  
 PENNINGTON COUNTY, SOUTH DAKOTA



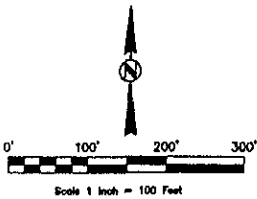
NE1/4SW1/4

UNPLATTED PORTION OF THE  
NE1/4SW1/4 SECTION 24

**RECEIVED**

OCT 14 2005

**Rapid City Growth**  
**Management Department**

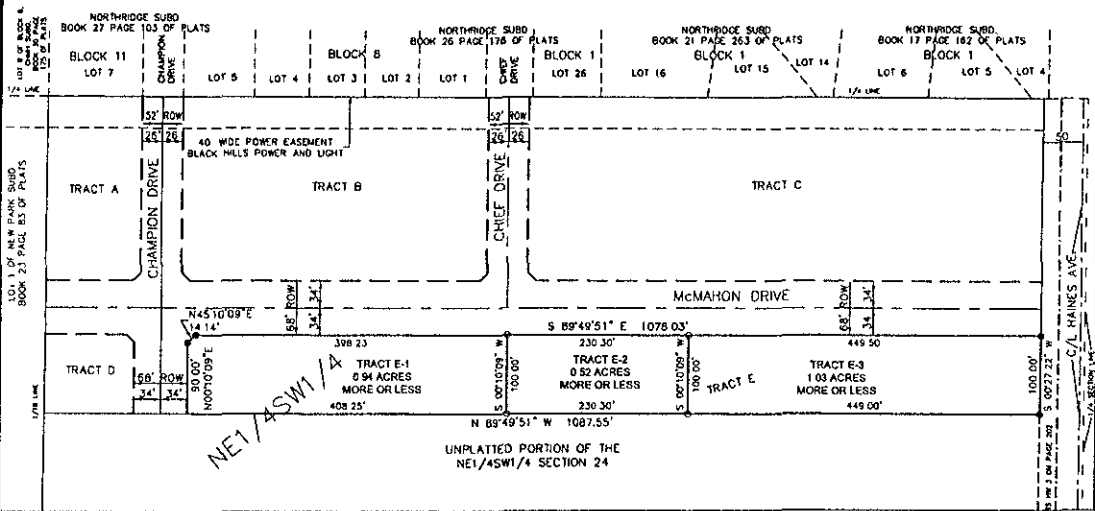


- LEGEND**
- Denotes set 5/8" rebar with survey cap marked "ARLETH 3977"
  - Denotes Found Survey Monument

- NOTES:**
1. MINOR DRAINAGE AND UTILITY EASEMENTS ARE HEREBY ESTABLISHED IF WIDE ON THE INTERIOR SIDE OF ALL LOT LINES AND RIGHT-OF-WAY (EXCEPT WHERE MAJOR DRAINAGE EASEMENTS ARE LOCATED)
  2. TOTAL PLATTED AREA, 3.48 ACRES. LOTS: 3.48 ACRES.
  3. ANY MAJOR DRAINAGE EASEMENT SHOWN HEREON SHALL BE KEPT FREE OF ALL OBSTRUCTIONS INCLUDING BUT NOT LIMITED TO BUILDINGS, WALLS, FENCES, HEDGES, TREES, AND SHRUBS. THESE EASEMENTS GRANT TO ALL PUBLIC AUTHORITIES THE RIGHT TO CONSTRUCT, OPERATE, MAINTAIN, INSPECT AND REPAIR SUCH IMPROVEMENTS AND STRUCTURES AS IT DEEMS EXPEDIENT TO FACILITATE DRAINAGE FROM ANY SOURCE.
  4. NON-ACCESS EASEMENTS ARE HEREBY ESTABLISHED ALONG THE FIRST FIFTY FEET OF CORNER LOTS OR AS INDICATED HEREON.
  5. ACREAGE SHOWN ON LOTS INCLUDE EASEMENTS.

PLAT OF MCMAHON SUBDIVISION  
TRACT E-1, TRACT E-2 AND TRACT E-3  
FORMERLY TRACT E OF MCMAHON SUBDIVISION

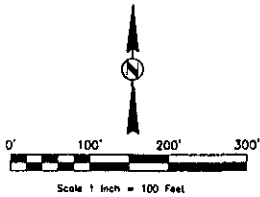
LOCATED IN THE NE1/4SW1/4 OF SECTION 24, T2N, R7E, B.H.M., CITY OF RAPID CITY,  
PENNINGTON COUNTY, SOUTH DAKOTA



RECEIVED

OCT 14 2005

Rapid City Growth  
Management Department



LEGEND

- Denotes set 5/8" rebar with survey cap marked "ARLETH 3977"
- Denotes Found Survey Monument

NOTES:

1. MINOR DRAINAGE AND UTILITY EASEMENTS ARE HEREBY ESTABLISHED IF MADE ON THE INTERIOR SIDE OF ALL LOT LINES AND RIGHT-OF-WAY (EXCEPT WHERE MAJOR DRAINAGE EASEMENTS ARE LOCATED)
2. TOTAL PLATTED AREA, 11.84 ACRES, LOTS, 8.94 ACRES, DEDICATED R.O.W. 2.70 ACRES;
3. ANY MAJOR DRAINAGE EASEMENT SHOWN HEREON SHALL BE KEPT FREE OF ALL OBSTRUCTIONS INCLUDING BUT NOT LIMITED TO BUILDINGS, WALLS, FENCES, HEDGES, TREES, AND SHRUBS, THESE EASEMENTS GRANT TO ALL PUBLIC AUTHORITIES THE RIGHT TO CONSTRUCT, OPERATE, MAINTAIN, INSPECT AND REPAIR SUCH IMPROVEMENTS AND STRUCTURES AS IT DEEMS EXPEDIENT TO FACILITATE DRAINAGE FROM ANY SOURCE
4. NON-ACCESS EASEMENTS ARE HEREBY ESTABLISHED ALONG THE FIRST FIFTY FEET OF CORNER LOTS OR AS INDICATED HEREON.
5. ACREAGE SHOWN ON LOTS INCLUDE EASEMENTS.