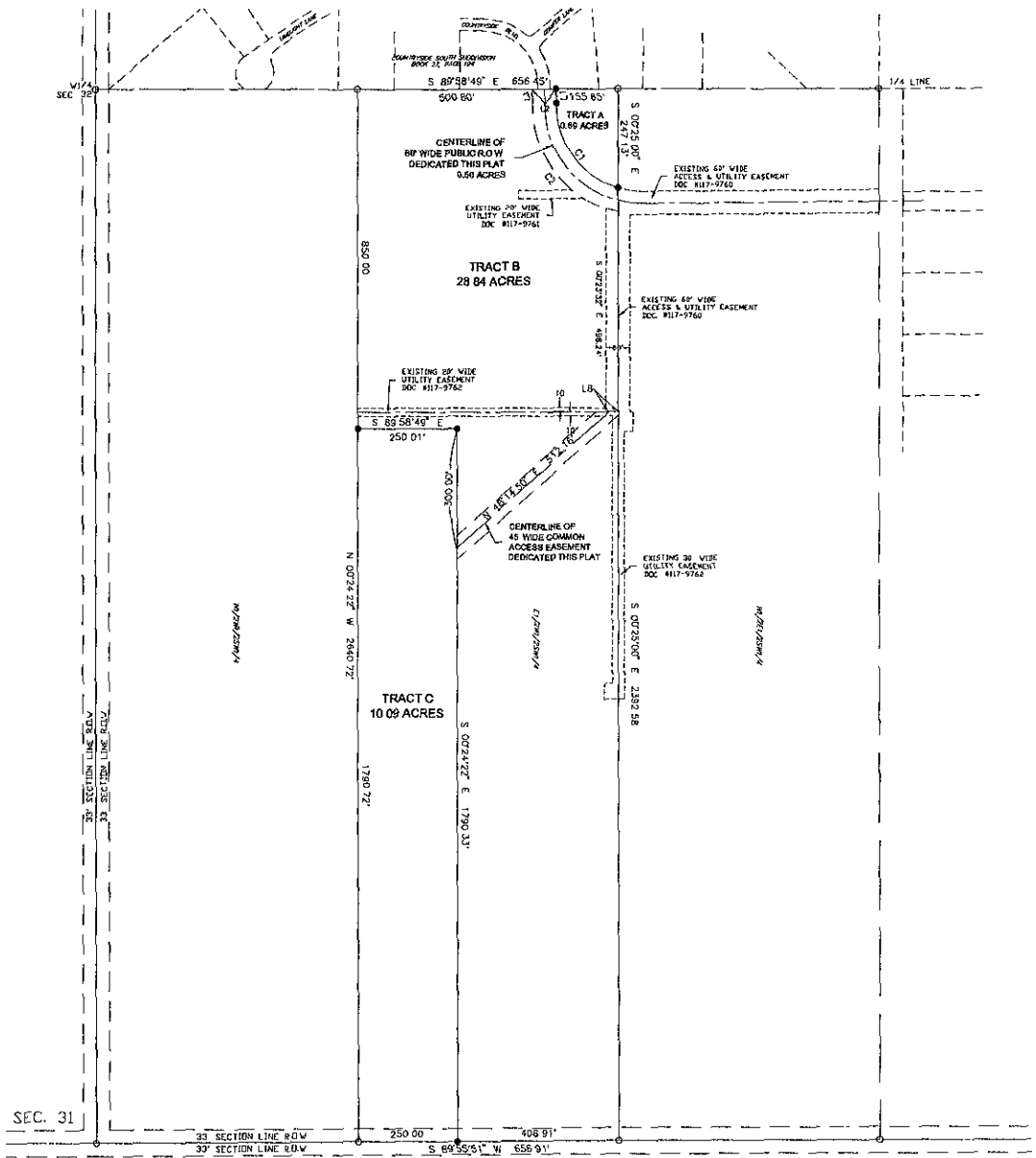


PLAT OF FALCON CREST SUBDIVISION

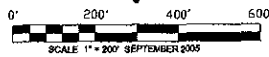
TRACT A, TRACT B AND TRACT C
LOCATED IN THE E1/2W1/2SW1/4 OF SECTION 32,
T.1N., R.7E., B.H.M., PENNINGTON COUNTY, SOUTH DAKOTA



RECEIVED

SEP 30 2005

Rapid City Growth
Management Department



LINE	BEARING	DISTANCE
L1	N 00°01'18" E	36.17'
L2	N 89°58'48" W	60.00'
L3	S 00°01'18" W	36.17'
L4	N 90°00'00" W	136.99'
L5	S 00°00'00" E	20.00'
L6	N 90°00'00" E	156.51'
L7	S 87°30'00" E	35.41'
L8	S 86°59'43" E	24.31'

LEGEND

- Denotes set 5/8" rebar with survey cap marked "ARLETH 3977"
- Denotes Found Survey Monument

NOTES:

- 1 MINOR DRAINAGE AND UTILITY EASEMENTS ARE HEREBY ESTABLISHED BY VIDE ON THE INTERIOR SIDE OF ALL LOT LINES AND RIGHT-OF-WAY (EXCEPT WHERE MAJOR DRAINAGE EASEMENTS ARE LOCATED)
- 2 TOTAL PLATTED AREA 4012 ACRES, LOTS 3962 ACRES, DEDICATED ROW= 050 ACRES;
- 3 ANY MAJOR DRAINAGE EASEMENT SHOWN HEREON SHALL BE KEPT FREE OF ALL OBSTRUCTIONS INCLUDING BUT NOT LIMITED TO BUILDINGS, WALLS, FENCES, HEDGES, TREES, AND SHRUBS. THESE EASEMENTS GRANT TO ALL PUBLIC AUTHORITIES THE RIGHT TO CONSTRUCT, OPERATE, MAINTAIN, INSPECT AND REPAIR SUCH IMPROVEMENTS AND STRUCTURES AS IT DEEMS EXPEDIENT TO FACILITATE DRAINAGE FROM ANY SOURCE
- 4 MINOR ACCESS EASEMENTS ARE HEREBY ESTABLISHED ALONG THE FIRST FIFTY FEET OF CORNER LOTS OR AS INDICATED HEREON
- 5 ACREAGE SHOWN ON LOTS INCLUDE EASEMENTS

CURVE	RADIUS	ARC LENGTH	CHORD LENGTH	CHORD BEARING
C1	229.30'	282.24'	283.28'	N 30°45'53" W
C2	280.00'	377.18'	349.30'	N 38°34'10" W
C3	280.00'	34.72'	34.70'	N 67°12'18" W



PREPARED BY
**ARLETH &
ASSOCIATES**

25 KIRK ROAD
DEADWOOD, SD 57732
605-578-1637

JOB NO
6205

DATE SEPTEMBER 28, 2005

SCALE 1" = 100'

DRAWN

APPROVED JMA

DWG 6205/FINAL/PLAT DWG

PREPARED FOR
DREAM DESIGN INTERNATIONAL, INC
628 KANSAS CITY STREET, SUITE 5
RAPID CITY, SOUTH DAKOTA 57901
(605) 348-8538