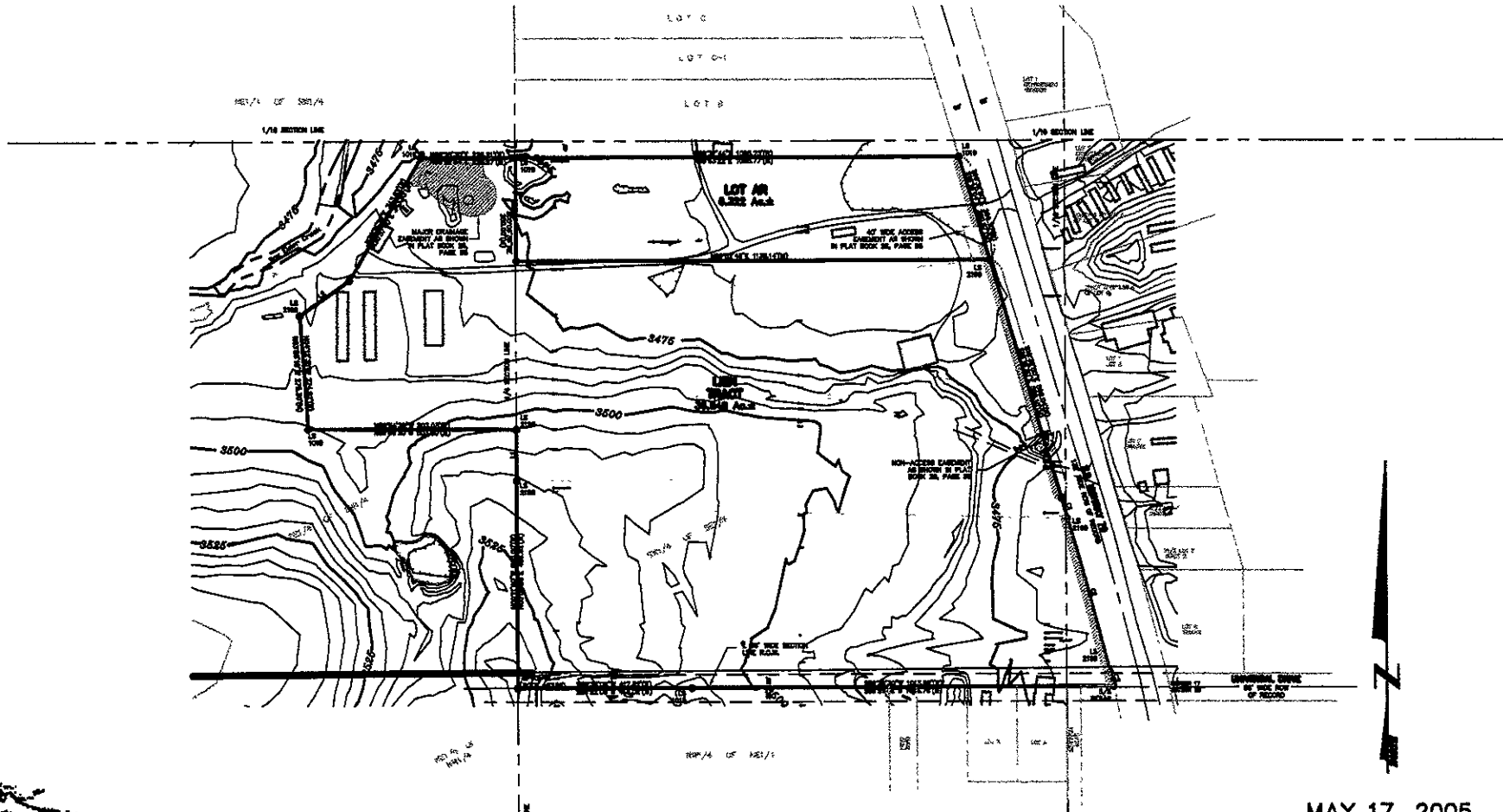


05PL072

TOPOGRAPHICAL SURVEY  
**LOTS A, B, AND C**  
**OF KELLER SUBDIVISION**  
 LOCATED IN THE S1/2 OF SE1/4  
 SECTION 17, T2N, R7E, BHM  
 PENNINGTON COUNTY, SOUTH DAKOTA



**Renner Associates, LLC.**



616 Sixth St. \* Rapid City, SD 57701 \* 605/721-7310  
 FAX: 605/721-7313 \* E-MAIL: Gary@RennerAssoc.com

MAY 17, 2005  
 0 200 400 800  
 SCALE 1" = 400'