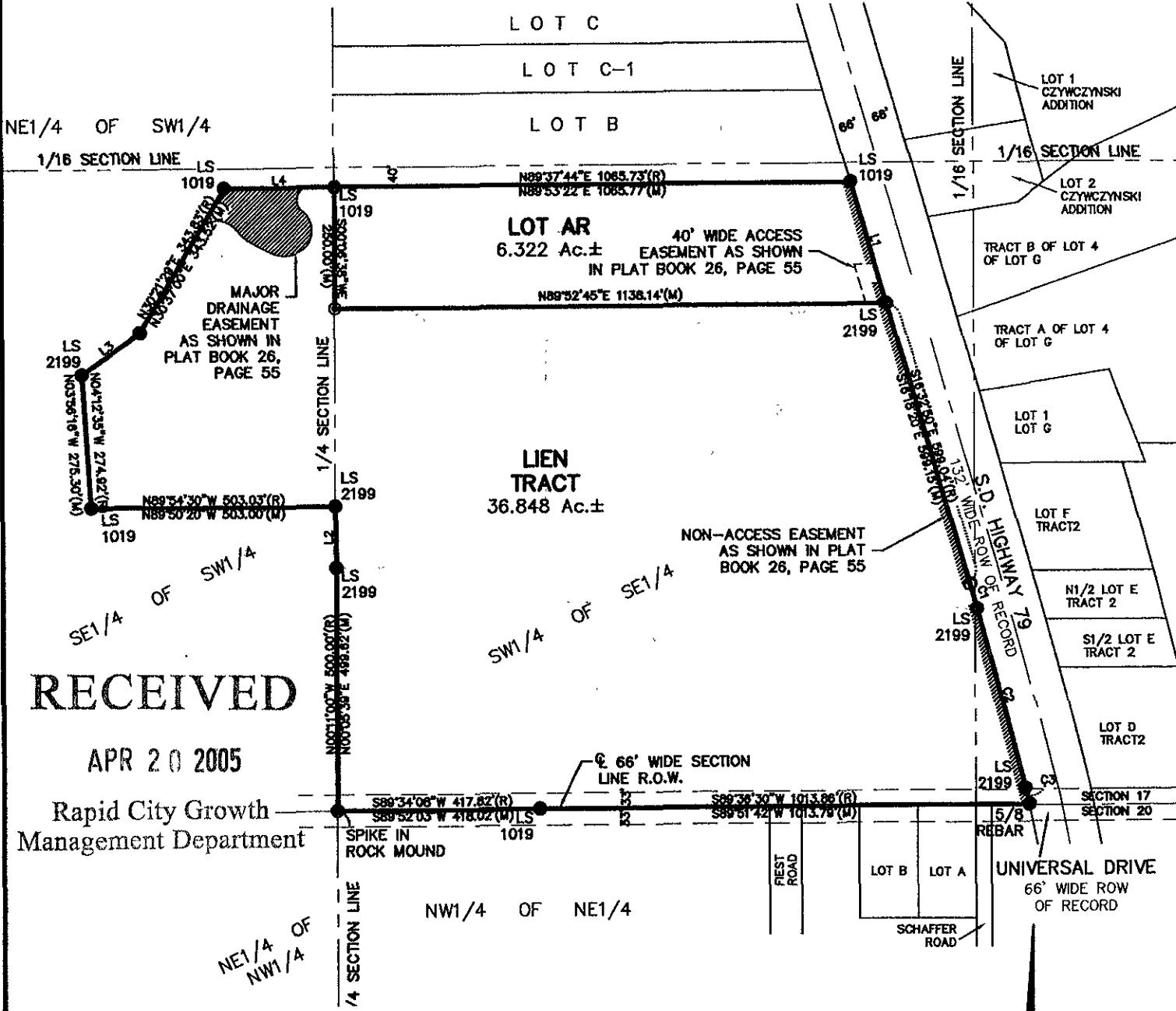


PLAT OF LIEN TRACT AND LOT AR OF KELLER SUBDIVISION,

(formerly Lots A, B, and C of Keller Subdivision)
LOCATED IN THE S1/2 OF SE1/4
SECTION 17, T2N, R7E, BHM,
PENNINGTON COUNTY, SOUTH DAKOTA



RECEIVED

APR 20 2005

Rapid City Growth
Management Department



Renner Associates, LLC.

616 Sixth St. * Rapid City, SD 57701 * 605/721-7310
FAX: 605/721-7313 * E-MAIL: Gary@RennerAssoc.com

APRIL 19, 2005
N.T.S.

Plat.dwg, 4/19/2005 3:05:32 PM