

04SV042

VARIANCE EXHIBIT

WAIVE REQUIREMENT OF CURB, GUTTER, SIDEWALK, PAVEMENT, SEWER, WATER MAIN, AND STREET LIGHT CONDUIT

VARIANCE AREA

SE 1/4 SECTION 35

PROPOSED SAMMIS TRAIL (PAVED MAJOR ARTERIAL)

PROPOSED SAMMIS TRAIL (PAVED MAJOR ARTERIAL)

EXISTING SAMMIS TRAIL (GRAVEL SURFACE)

SW 1/4 SECTION 35



SCALE: 1" = 500'

US HIGHWAY 16

HYLAND PARK SUBDIVISION

JOB NO: 04-0008

REV 1:

DATE: 06/25/2004

REV 2:

DRAWN BY: RDC

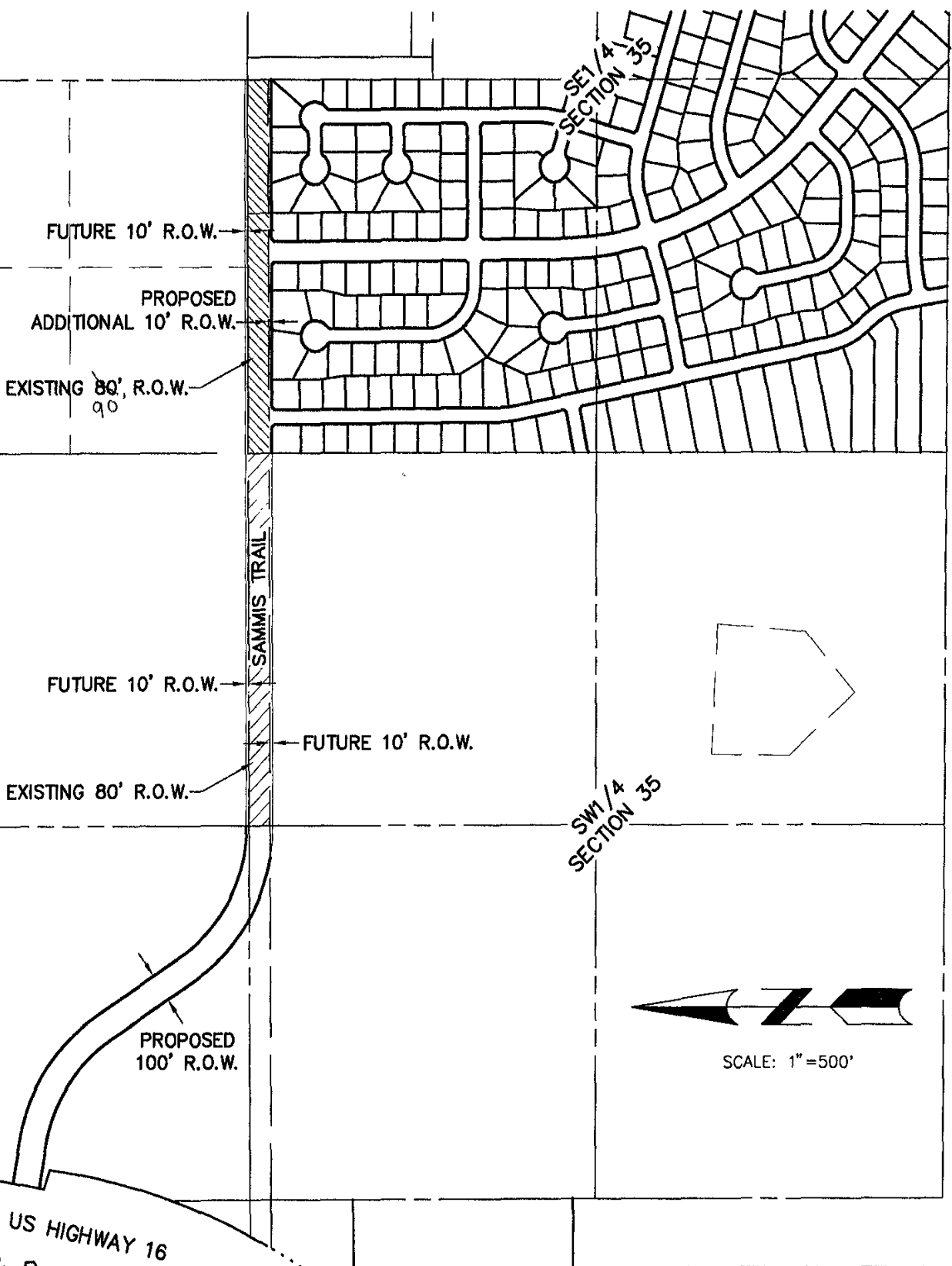
REV 3:



D.D.I.
DREAM DESIGN INTERNATIONAL, INC.
PROFESSIONAL STRUCTURAL & CIVIL ENGINEERING CONSULTANTS

528 KANSAS CITY ST. SUITE 4, RAPID CITY, SD 57701
PH. 605-348-0538 FAX. 605-348-0546 EMAIL: engineers@dreamdesigninc.com

R.O.W. VARIANCE EXHIBIT



HYLAND PARK SUBDIVISION

JOB NO: 04-0008
 DATE: 06/25/2004
 DRAWN BY: RDC

REV 1:
 REV 2:
 REV 3:



D.D.I.
DREAM DESIGN INTERNATIONAL, INC.
 PROFESSIONAL STRUCTURAL & CIVIL ENGINEERING CONSULTANTS
 628 KANSAS CITY ST., SUITE 4, RAPID CITY, SD 57701
 PH. 605-348-0538 FAX. 605-348-0545 EMAIL. engineers@dreamdesigninc.com

PLOT SCALE: 1"=500' DATE: 06/24/04 TIME: 07:35 FILE: \\server\projects\04-0008\Drawings\ExhibitA\ROW-Variance.dwg

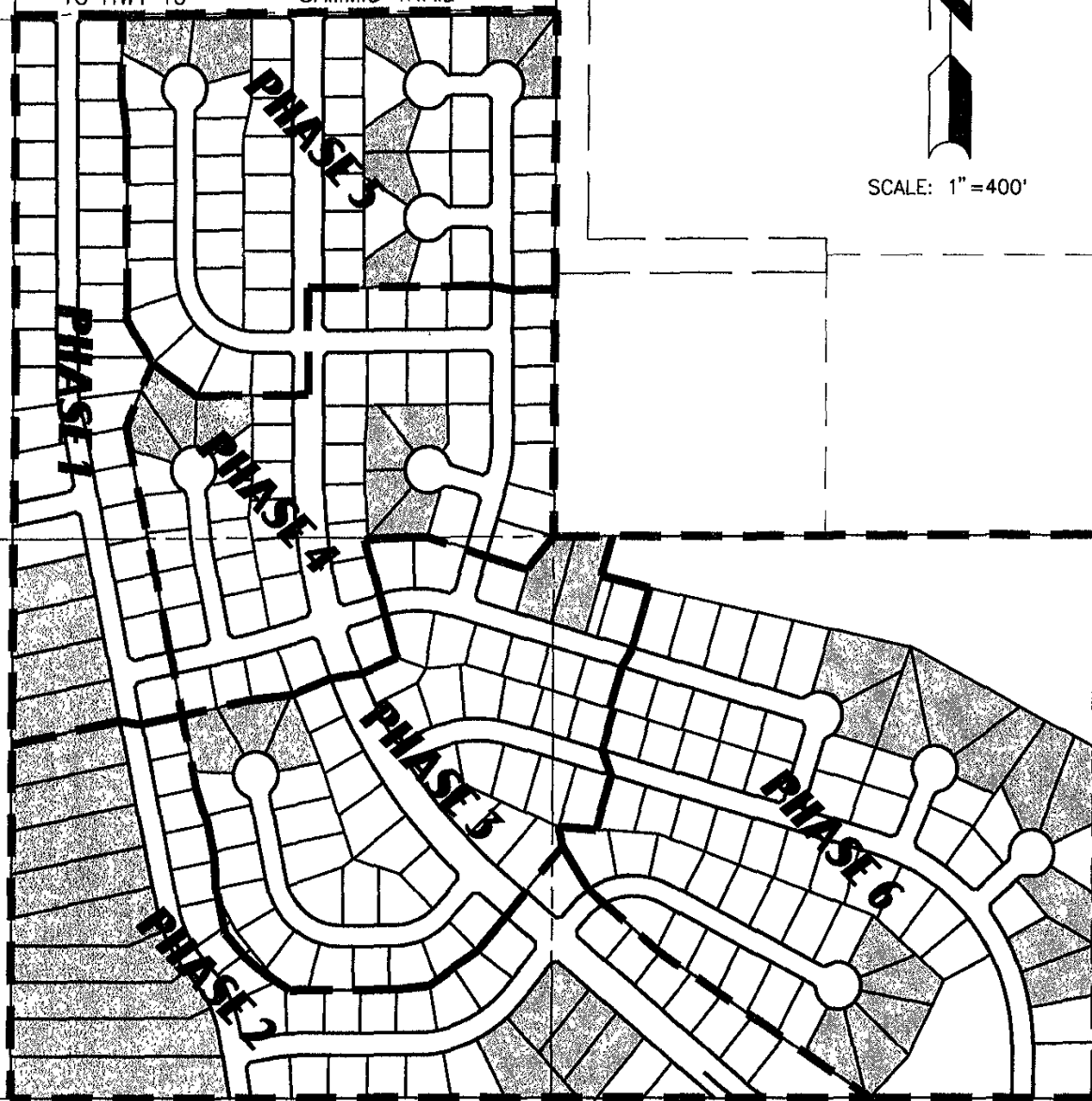
LOT DIMENSION VARIANCE EXHIBIT

PRIMARY ACCESS VIA SAMMIS TRAIL
TRAIL CONSTRUCTED WITH
PHASE 1

← TO HWY 16 SAMMIS TRAIL



SCALE: 1" = 400'



SECONDARY ACCESS VIA HART RANCH ROAD CONSTRUCTED AT THE END OF PHASE 2

HYLAND PARK SUBDIVISION

JOB NO: 04-0008	REV 1:
DATE: 06/25/2004	REV 2:
DRAWN BY: RDC	REV 3:



D.D.I.
DREAM DESIGN INTERNATIONAL, INC.
 PROFESSIONAL STRUCTURAL & CIVIL ENGINEERING CONSULTANTS
 528 KANSAS CITY ST., SUITE 4, RAPID CITY, SD 57701
 PH. 605-348-0538 FAX. 605-348-0545 EMAIL: engineers@dreamdesigninc.com