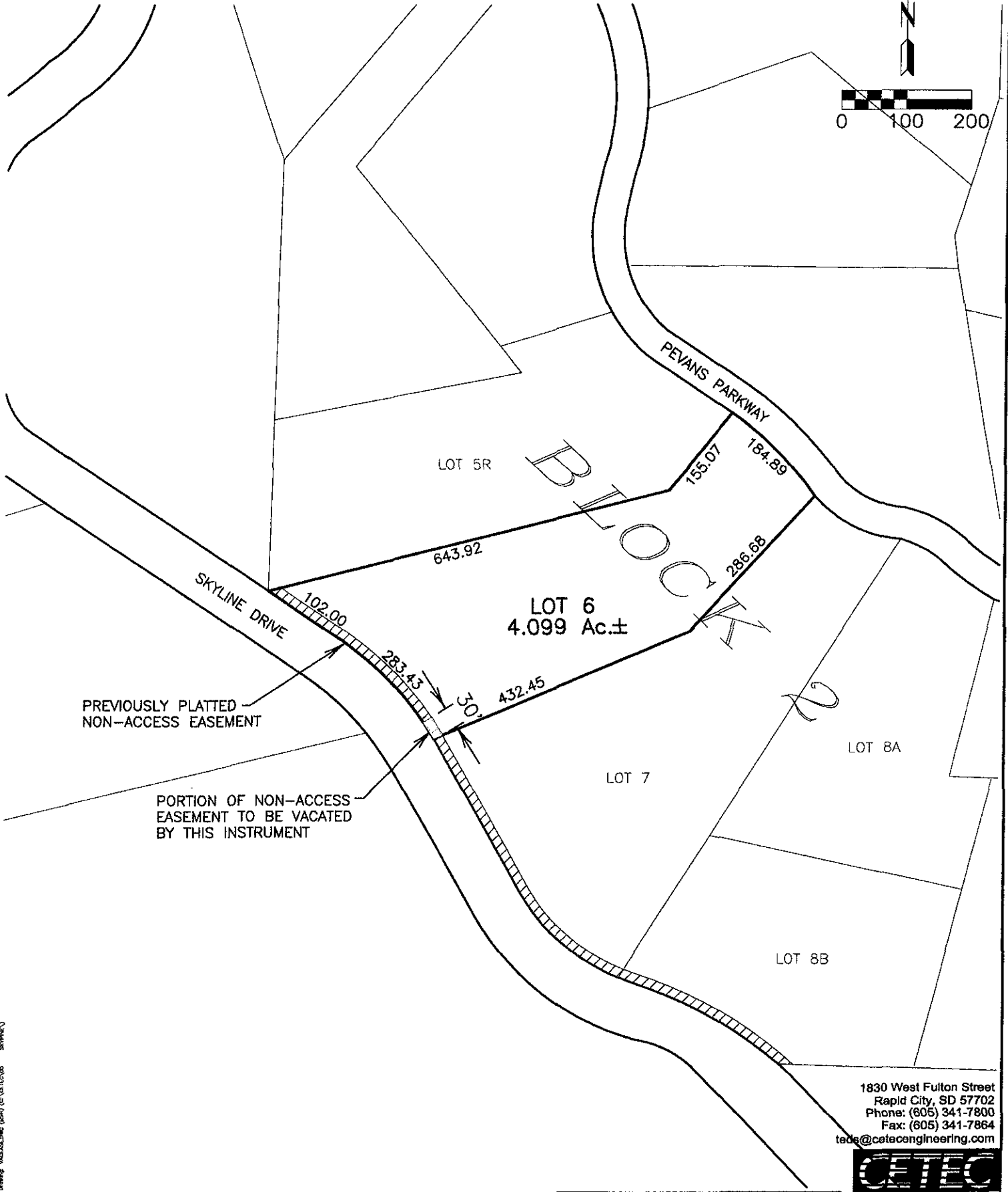
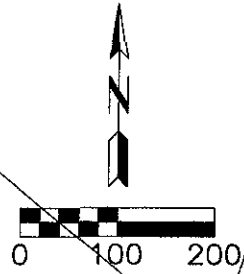


EXHIBIT "A"

SHOWING VACATION OF A PORTION OF NON-ACCESS EASEMENT
 FOR LOT 6, BLOCK 2, SKYLINE PINES SUBDIVISION
 IN THE SW1/4 OF SECTION II, T1N, R7E, B.H.M.
 RAPID CITY, PENNINGTON COUNTY, SOUTH DAKOTA



Surveyed by: [illegible]
 Date: [illegible]

1830 West Fulton Street
 Rapid City, SD 57702
 Phone: (605) 341-7800
 Fax: (605) 341-7864
 ted@catceengineering.com

