

Pactola Dam Emergency Preparedness Plan



*Rapid City-Pennington County
Emergency Management*

February 2002

PACTOLA DAM EMERGENCY PREPAREDNESS PLAN

TABLE OF CONTENTS

	Page
Purpose.....	3
Authority	3
Threat Analysis.....	3
Objectives	3
Concept of Operations.....	4
Command & Management.....	7
Expected Actions	8
Internal Alert Actions	9
Response Level 1 Actions	10
Response Level 2 Actions	11
Response Level 3 Actions	17
Response Level 4 Actions	28
Attachments.....	33
Attachment 1 – Suggested Evacuation Responsibilities	33
Attachment 2 – Inundation Maps	34

PACTOLA DAM EMERGENCY PREPAREDNESS PLAN

PURPOSE

The Pactola Dam Emergency Preparedness Plan is prepared as a condition of compliance with the South Dakota Water Management Board, Safety of Dam Rules, ARSD Chapter 74:02:08 and United States Bureau of Reclamation policy. The information contained within this plan is intended to provide for the warning, evacuation, and care of people residing within an area potentially affected by a breach or failure of this structure.

AUTHORITY

Environment and Natural Resources; SDCL 46-7-3, 46-7-5, 46-7-5.1
Water Board Safety of Dam Rules; ARSD Chapter 74:02:08
Emergency and Disaster Service; SDCL 33-15
Rapid City Laws and Ordinances
US Bureau of Reclamation Policy

THREAT ANALYSIS

Pactola Dam is classified as a high-hazard facility. Failure of the dam has the potential to jeopardize lives and property along Rapid Creek to the Oahe Reservoir. In addition, economic loss would be significant due to destruction of residences, businesses, roads, highways, and utilities.

Pactola Dam has been structurally modified and is now capable of passing the volume of a Probable Maximum Flood. The primary hazards are associated with the limited capacity of the Rapid Creek channel.

OBJECTIVES

This plan delineates procedures necessary to cope with large releases or a potential or actual breach or failure of the Pactola Dam. The plan objectives are:

- A. Identify the duties and responsibilities of Pennington County, Rapid City, and State emergency response organizations involved in responding to large releases of water, or a dam breach or failure.
- B. Describe the procedures for plan implementation.
- C. Describe warning procedures.
- D. Describe evacuation procedures.
- E. Describe reception and care procedures.
- F. Identify actions for traffic control and perimeter security.

CONCEPT OF OPERATIONS

Upon large releases of water, a dam breach or failure, or other emergency event, control of the situation will be assumed by the initial responding public safety officer who will become the Incident Commander (IC). The initial responding public safety officer will remain the IC until relieved by an experienced senior official from an appropriate law, fire, or public works agency.

A. Plan Implementation

1. Large releases of water, dam breach or failure warning calls to the Emergency Services Communications Center (ESCC) from concerned citizens will be considered authentic until determined otherwise. The ESCC dispatcher will contact the dam tender (342-3696) and send an official or officer to confirm the event and will simultaneously initiate Warning Fan-Out Plan notification procedures in accordance with Annex F, Attachment 1a of the Rapid City-Pennington County Multi-Hazard Emergency Operations Plan.
2. Notification from the US Bureau of Reclamation of an internal alert or response level will initiate the required response as stated elsewhere in the attached annexes.
3. Designees of state and local agencies stated herein will prepare to respond to the incident unless advised to the contrary.
4. Upon confirmation of large releases of water, a dam breach or failure threat, or other emergency event, those agencies assigned emergency responsibilities will proceed with their functional assignments.

B. Emergency Operations Center/Incident Command Post

1. Upon notification that large releases of water, a dam breach or failure incident, or other emergency event has occurred or is developing, the Rapid City-Pennington County Emergency Management Coordinator will activate the Emergency Operations Center (EOC) and/or assist in activating an Incident Command Post.
2. The Emergency Management Coordinator in cooperation with the ESCC and the National Weather Service will ensure those in immediate danger are warned first.
3. The US Bureau of Reclamation, EOC staff and/or Incident Commander will continually receive and analyze information and advise agencies accordingly. Communications and coordination will be maintained between those involved in the warning and evacuation process.
4. The Emergency Management Coordinator will brief local governing officials and state government representatives on the status of the situation and convey requests for extraordinary supplemental assistance to the South Dakota Office of Emergency Management.

5. In the event of large releases of water, a dam breach or failure, the EOC staff and/or Incident Commander will monitor the situation and determine when it is safe for evacuees to return to the impacted areas. The EOC staff will issue advisories on the situation and provide information on any health and safety measures required to be taken upon re-entry.

C. Warning

1. Response Levels

- a. The severity of the situation will dictate the manner and importance assigned to disseminating the warning to local officials and the general public. The US Bureau of Reclamation has classified events at the dam into five emergency response level categories.
 1. Internal Alert - Results in increased surveillance and internal notifications of affected organizations. Nothing serious is happening at this time. The current event will be observed and analyzed for further developments.
 2. Response Level 1 - Involved organizations need to “standby” for additional information relative to the developing situation. There is no emergency at this time, this is an alert status.
 3. Response Level 2 - At this point the dam may be unstable or operational releases will be such that they could become life threatening. The dam will not have failed, nor is failure imminent. Populations must be notified that they are on stand-by status for evacuation and should begin preparations to leave.
 4. Response Level 3 - Evacuation of affected populations must begin. Operational releases have become life-threatening or the dam is in danger of impending failure within four to six hours.
 5. Response Level 4 - The dam is failing or has failed, resultant releases are extremely life-threatening. **Immediate evacuation required.**
- b. An Internal Alert and Response Levels 1 and 2 may allow time to prepare for the possibility of a dam breach or failure. US Bureau of Reclamation, the RC Public Works Department, and RC/PC Emergency Management Office will monitor the situation and review contingency options based upon the severity of the problem.
- c. A Response Level 2 requires warning of those residents within the threatened area to prepare for a possible evacuation order..
- d. Response Level 3 requires residents within the threatened area to evacuate.

- e. **A Response Level 4 requires immediate evacuation.** The ESCC will sound the Public Warning Sirens as appropriate, dispatch emergency service units to contact the endangered, and direct the Emergency Management Office to broadcast an Emergency Alert System (EAS) message.

2. Dissemination

- a. The agency furnishing the IC, supported by the Johnson Siding Fire Department, the Pennington County Sheriff's Office, and the Pennington County Search and Rescue Team, will coordinate all emergency service units involved in the warning.
- b. Residents will be alerted to evacuate through the use of public warning sirens, electronic news media announcements, public address systems, and door-to-door contact.
- c. If time permits, residents will be given specific instructions on vacating their home, following evacuation routes, and the locations of reception and care centers.
- d. Requests for transportation will be relayed to the EOC and/or the ICP.

D. Evacuation

- 1. The Pennington County Sheriff's Office, the Johnson Siding Fire Department, Rapid City Police Department, and Rapid City Department of Fire and Emergency Services will coordinate all evacuation activities.
- 2. Designated evacuation routes will be followed, as conditions permit.
- 3. Pennington County Highway Department, Sheriff's Office, the SD Highway Patrol, and other public agencies will assist in marking the routes, establishing barricades, and managing traffic.
- 4. Volunteer organizations will be registered at the EOC and assigned to the IC for dam monitoring, traffic management, and emergency transportation, as needed.
- 5. If time permits, emergency personnel will verify that all warned residences are evacuated and utilities shut off.
- 6. Upon completion of the evacuation, the Pennington County Sheriff's Office (county) and the Rapid City Police Department (city) have primary jurisdiction and shall use their best efforts to provide security for homes by controlling ingress and egress and through implementation of their security programs.

E. Reception and Care

1. The Emergency Management Office will coordinate with the Red Cross, Salvation Army, and other local agencies for the activation of reception and care centers upon notification of a need for evacuation.
2. Security for the reception and care centers will be coordinated through the Rapid City Police Department.
3. The Emergency Management Office will coordinate the assigning of medical personnel to reception and care centers to ensure that all precautions are taken against sickness and injury.
4. Reception and care centers will register all evacuees and provide this list to the EOC.

F. Public Information

1. In the event of a Response Level 4 incident (practically instantaneous breach/failure), the Emergency Management Office in collaboration with the National Weather Service will issue evacuation information through the electronic news media.
2. The Emergency Management Office or EOC Public Information Officer will be responsible for public announcements under a Response Level 2 or 3 incident.
3. The Emergency Management Office or EOC Public Information Officer will assure that emergency response personnel and the electronic media are provided specific instructions on evacuation routes, reception and care center locations, and re-entry information.
4. All public statements relating to the large water releases, dam breach/failure incident will be coordinated with the EOC and/or ICP.

COMMAND AND MANAGEMENT

Pennington County Government

The Pennington County Board of Commissioners is responsible for the overall direction and control of Pennington County governmental agencies responding to a potential or actual breach or failure of the Pactola Dam. The Board of Commissioners is responsible for designating persons authorized to incur costs, disseminate warning information, initiate evacuation procedures, and initiate reception and care procedures for Pennington County.

Rapid City Government

The Mayor is responsible for the overall direction and control of Rapid City agencies responding to emergency events, The Mayor is also responsible for designating persons authorized to incur costs, disseminate warning information,

initiate evacuation procedures, and initiate reception and care procedures for Rapid City.

EXPECTED ACTIONS

- A. Expected Actions are emergency response actions that Rapid City-Pennington County emergency services organizations would implement anytime emergency incidents occur that affect Pactola or Deerfield Dam(s).
- B. To help prevent over or under reacting to developing emergency conditions, it is recommended that any time a response is initiated by the U S Bureau of Reclamation, actions taken by Rapid City-Pennington County should be based on the severity of the event. Therefore, Reclamation classifies emergency events affecting Pactola or Deerfield Dam(s) into one of the five unique emergency classifications listed on the following pages.
- C. Declaration of any one of these Response Levels will prompt Rapid City-Pennington County organizations to implement specific Expected Actions designed specifically for that Response Level.
- D. The U S Bureau of Reclamation's Emergency Action Plan for Pactola and Deerfield Dam(s) includes the Expected Actions of dam operations personnel and other appropriate Reclamation offices for each Response Level.
- E. Expected Actions of these organizations have been arranged according to the severity and time of occurrence of the developing emergency event and then placed under the appropriate Response Levels. This means that the Expected Actions for each organization will be the response actions that organization will implement when that Response Level is declared. This operating methodology has been designed to help prevent organizations from over or under reacting to the observed and identified emergency event that is occurring.
- F. Other Federal, State, and local public safety officials are encouraged to evaluate the actions they would take in response to emergency incidents at Pactola or Deerfield Dam(s) and arrange them according to the Response Level they would most appropriately fall under, as has already been done for Reclamation organizations under the Emergency Action Plan for Pactola and Deerfield Dam(s). The rationale for doing this is to promote integration of plans and procedures that all public safety organizations would implement in response to emergency conditions affecting Pactola or Deerfield Dam(s).
- G. Each Response Level contains a list of Expected Actions that Rapid City-Pennington County organizations having emergency responsibilities would implement in response to declaration of each specific Response Level.
- H. The Expected Actions that would be implemented in response to emergency incidents affecting Pactola or Deerfield Dam(s) by Rapid City-Pennington County organizations having emergency responsibilities are detailed on the following pages.

PACTOLA DAM INTERNAL ALERT ACTIONS

An Internal Alert at Pactola Dam results in increased surveillance. The event does not pose a hazard either at the dam or to downstream populations potentially at risk. The current event will be observed and analyzed for further developments.

Internal Alert Response Level involves procedures and activities that are solely internal to personnel of affected organizations. It does not represent an emergency that would require external notifications although they could be made as a courtesy to the downstream jurisdiction.

EXPECTED ACTIONS

**US BUREAU OF RECLAMATION
PACTOLA DAM TENDER
RAPID CITY PUBLIC WORKS**

- ☐ Inform RC-PC Emergency Management of concerns that activated the Internal Alert.

Business hours: (605) 394-2185

After hours, weekends, and holidays:

Park Owens: (605) 348-8935 or (605) 394-4135 or 911

Pam Buck: (605) 716-0899 or (605) 394-4135 or 911

PACTOLA DAM RESPONSE LEVEL 1 ACTIONS

Response Level 1 indicates that Rapid City-Pennington County organizations need to “stand-by” for additional information relative to the developing situation. Indications are that something is happening that could progress into a potentially significant threatening event if it continues or intensifies.

Response Level 1 does not represent an emergency YET, but may be perceived as such by the media or general public. Nor does Response Level 1 pose a hazard at the dam or to downstream populations at the time of observation.

Developing events in Response Level 1 will be identified as being a level of intensity where they can be managed and brought under control by the dam operating personnel with no negative impacts downstream.

EXPECTED ACTIONS

US BUREAU OF RECLAMATION PACTOLA DAM TENDER RAPID CITY PUBLIC WORKS

- ☐ Inform RC-PC Emergency Management of concerns that activated the Response Level 1.

Business hours: (605) 394-2185

After hours, weekends, and holidays:

Park Owens: (605) 348-8935 or (605) 394-4135 or 911

Pam Buck: (605) 716-0899 or (605) 394-4135 or 911

RC-PC EMERGENCY MANAGEMENT

- ☐ Inform the following agencies of Response Level 1 stand-by status:
 - ☐ Johnson Siding Fire Department
 - ☐ Pennington County Sheriff's Office
 - ☐ Rapid City Police Department
 - ☐ Rapid City Department of Fire & Emergency Services
 - ☐ Pennington County Search & Rescue
 - ☐ Rapid Valley Fire Department
 - ☐ Emergency Services Communications Center
 - ☐ Black Hills Chapter-American Red Cross
 - ☐ National Weather Service

PACTOLA DAM RESPONSE LEVEL 2 ACTIONS

Response Level 2 means that operational releases are high enough that they could become life-threatening or the condition of the dam is unstable. The dam has not failed nor is failure imminent. At this point populations at risk need to be notified to begin preparations in the event an evacuation becomes necessary. The dam may yet be able to be stabilized or releases maintained if conditions diminish.

Populations at risk are those living along Highway 44 West, Dark Canyon, and Rapid Valley.

EXPECTED ACTIONS

US BUREAU OF RECLAMATION PACTOLA DAM TENDER RAPID CITY PUBLIC WORKS

- ☐ 1. Notify Pennington County warning point, Emergency Services Communications Center at (605) 394-2151 or (605) 394-4131. Inform them of the Response Level 2 and tell them to follow their instructions in the Pactola Dam Plan.
- ☐ 2. Communicate with and update RC-PC Emergency Management on event status as information becomes available.

EMERGENCY SERVICES COMMUNICATIONS CENTER

- ☐ 1. Inform RC-PC Emergency Management of notification of Response Level 2.

Business hours: (605) 394-2185

After hours, weekends, and holidays:
Park Owens: (605) 348-8935 or (605) 394-4135 or 911
Pam Buck: (605) 716-0899 or (605) 394-4135 or 911
- ☐ 2. Page/contact the following agencies and inform them of the Response Level 2:
 - ☐ Johnson Siding Fire Department
 - ☐ Pennington County Sheriff's Office
 - ☐ Pennington County Highway Department
 - ☐ Pennington County Search & Rescue
 - ☐ State Radio (to notify Highway Patrol and State DOT)
 - ☐ Rapid Valley Fire Department
 - ☐ Rapid City Ambulance
 - ☐ Rapid City Police Department
 - ☐ Rapid City Department of Fire and Emergency Services
 - ☐ Rapid City Public Works Department

EMERGENCY MANAGEMENT

- ☐ 1. Inform the following of the Response Level 2 situation:
 - ☐ Pennington County Board of Commissioners
 - ☐ Mayor, City of Rapid City
 - ☐ National Weather Service
 - ☐ SD Division of Emergency Management Region IV Coordinator
 - ☐ Black Hills Chapter American Red Cross
 - ☐ Salvation Army
 - ☐ Health and Human Services
 - ☐ Local Utility Companies
- ☐ 2. Activate the Emergency Alert System to inform population at risk of the need to prepare for evacuation.
- ☐ 3. Request Red Cross open a shelter for those residents preferring to leave their homes at this time.
- ☐ 4. Activate the Emergency Operations Center at level one as described in the Emergency Operations Plan. Be prepared to expand EOC to level two when needed.

PENNINGTON COUNTY BOARD OF COMMISSIONERS RAPID CITY COMMON COUNCIL RAPID CITY MAYOR

- ☐ 1. Maintain communications with RC-PC Emergency Management Office.
- ☐ 2. Assure Continuity of Government.
- ☐ 3. Direct a representative to the EOC if/when situation requires.

NATIONAL WEATHER SERVICE

- ☐ 1. Provide meteorological forecasts and information to RC-PC Emergency Management, Bureau of Reclamation, and other response agencies.
- ☐ 2. Notify the Sioux Falls NWS office to issue the Flash Flood Watch after coordination with RC-PC Emergency Management. Disseminate the watch on the NOAA Weather Radio and Emergency Alert System (EAS). Issue public statements as information is received.
- ☐ 3. Notify the Missouri Basin River Forecast Center and provide information to assist them.

JOHNSON SIDING FIRE DEPARTMENT

- ☐ 1. Establish, or assist in establishing, an Incident Command Post. Report to EOC if/when situation requires.
- ☐ 2. Coordinate evacuation notifications with RC-PC Emergency Management, Pennington County Sheriff's Office, and Pennington County Search and Rescue.
- ☐ 3. Coordinate possible road and highway closings and traffic management with Pennington County Highway Department, Pennington County Sheriff's Office, State Department of Transportation, and the SD Highway Patrol.
- ☐ 4. Warn population at risk of the situation and advise them to prepare for a possible evacuation. Encourage those that want to leave immediately to do so. Those that prefer to stay should be informed that if an evacuation order is issued there will be no time for further preparation.
- ☐ 5. Inform population at risk of evacuation routes.
- ☐ 6. Inform population at risk of shelter availability.
- ☐ 7. Move fire apparatus out of possible inundation areas.

PENNINGTON COUNTY SHERIFF'S OFFICE

- ☐ 1. Establish, or assist in establishing an Incident Command Post. Report to EOC if/when situation requires.
- ☐ 2. Coordinate with Johnson Siding Fire Department, Rapid Valley Fire Department, Pennington County Highway, State Department of Transportation, Pennington County Search and Rescue, and SD Highway Patrol on evacuation notification, procedures, and routes.
- ☐ 3. Provide security for evacuated homes as the situation allows.

PENNINGTON COUNTY SEARCH AND RESCUE

- ☐ 1. Report to, or assist in establishing the Incident Command Post. Report to EOC if/when situation requires.
- ☐ 2. Coordinate evacuation notification actions with all other agencies involved.
- ☐ 3. Remove Search and Rescue apparatus from possible inundation areas.

RAPID VALLEY FIRE DEPARTMENT

- ☐ 1. Report to, or assist in establishing the Incident Command Post. Report to EOC if/when situation requires.
- ☐ 2. Coordinate evacuation notification actions with all other agencies involved.
- ☐ 3. Notify property owners in known low-lying areas of current and potential threats.
- ☐ 4. Remove fire apparatus from possible inundation areas.

PENNINGTON COUNTY HIGHWAY DEPARTMENT

- ☐ 1. Report to Incident Command Post when requested. Report to EOC if/when situation requires.
- ☐ 2. Coordinate with other emergency response agencies in preparing for road and highway closures in the event of an evacuation.
- ☐ 3. Remove County Highway apparatus from inundation areas.
- ☐ 4. Prepare to assist with debris clearance, emergency repair, and construction, as necessary.
- ☐ 5. Prepare to coordinate private construction resources if needed.

SOUTH DAKOTA STATE RADIO

- ☐ 1. Notify SD Highway Patrol of possible evacuation of affected areas.
- ☐ 2. Notify SD DOT of possible evacuation of affected areas.

SOUTH DAKOTA HIGHWAY PATROL

- ☐ Coordinate with Incident Command Post to prepare for possible road and highway closures, and traffic control.

SOUTH DAKOTA DEPARTMENT OF TRANSPORTATION

- ☐ 1. Coordinate with Incident Command Post and other agencies to prepare for possible road and highway closures.
- ☐ 2. Prepare to assist with debris removal if necessary.

RAPID CITY AMBULANCE**RAPID CITY DEPARTMENT OF FIRE AND EMERGENCY SERVICES**

- ☐ 1. Coordinate with Incident Command in preparation for evacuating residents requiring medical assistance. Report to EOC if/when situation requires.
- ☐ 2. Transport those residents requiring medical assistance to safe areas.
- ☐ 3. Relocate Rapid City vehicles, medical supplies, equipment, and essential resources from potential inundation areas.

RAPID CITY PUBLIC WORKS

- ☐ 1. Prepare to assist with debris clearance or road closings within the Rapid City area as needed.
- ☐ 2. Report to EOC if/when situation requires.

RAPID CITY POLICE DEPARTMENT**RAPID CITY DEPARTMENT OF FIRE AND EMERGENCY SERVICES**

- ☐ 1. Monitor the situation and be prepared to assist as needed within Rapid City area.
- ☐ 2. Be prepared for possible evacuation notifications, road closings, security, etc. if the situation escalates to Response Level 3.
- ☐ 3. Report to EOC if/when situation requires.

SOUTH DAKOTA OFFICE OF EMERGENCY MANAGEMENT

- ☐ 1. Standby to assist RC-PC Emergency Management upon request and as necessary.
- ☐ 2. Coordinate with National Guard for possible augmentation of manpower and resources.
- ☐ 3. Notify the SD Dam Safety Engineer's office.
- ☐ 4. Notify the Governor's Office of potential threat to downstream populations.

AMERICAN RED CROSS**SALVATION ARMY**

- ☐ 1. Coordinate with RC-PC Emergency Management regarding the need for shelters.

- ☐ 2. Coordinate response efforts with other agencies to ensure resources are effectively utilized and services are not unnecessarily duplicated.
- ☐ 3. Review availability of food and potable water sources.

HEALTH AND HUMAN SERVICES

- ☐ 1. Report to EOC if/when situation requires.
- ☐ 2. Coordinate with Red Cross and Salvation Army on establishing shelters.
- ☐ 3. Contact school superintendents regarding use of school facilities for shelters.
- ☐ 4. Contact Pennington County Humane Society for temporary housing of shelteree's pets.
- ☐ 5. Coordinate with RC-PC Emergency Management or EOC Public Information Officer on news releases regarding shelter availability.

PACTOLA DAM RESPONSE LEVEL 3 ACTIONS

Response Level 3 **requires** the evacuation of populations at risk. Response Level 3 is an extremely serious situation. Major life-threatening releases will be made, major structural damage to the dam will occur, or the physical condition of the dam will have deteriorated to the point that stabilization is not possible and the dam will likely fail within 4 to 6 hours.

Populations at risk are those living along Highway 44 West, Dark Canyon, Rapid City, and Rapid Valley.

Declaration of Response Level 3 means populations at risk are in **imminent danger**. This may be the result of worsening conditions since a declaration of Response Level 1 or 2, or it could be that conditions have developed so rapidly that a Response Level 3 is warranted without the prior issuing of a less serious response level. When a Response Level 3 is declared the evacuation of flood inundation areas must take place immediately.

EXPECTED ACTIONS

US BUREAU OF RECLAMATION PACTOLA DAM TENDER RAPID CITY PUBLIC WORKS

- ☐ 1. Notify Pennington County warning point, Emergency Services Communications Center at (605) 394-4131 or (605) 394-2151. Inform them of the Response Level 3 and tell them to follow their instructions in the Pactola Dam Plan.
- ☐ 2. Communicate and update RC-PC Emergency Management on event status as information becomes available.

EMERGENCY SERVICES COMMUNICATIONS CENTER

- ☐ 1. Inform RC-PC Emergency Management of notification of Response Level 3.

Business hours: (605) 394-2185

After hours, weekends, and holidays:
Park Owens: (605) 348-8935 or (605) 394-4135 or 911
Pam Buck: (605) 716-0899 or (605) 394-4135 or 911
- ☐ 2. Page/contact the following agencies and inform them of the Response Level 3:
 - ☐ Johnson Siding Fire Department
 - ☐ Pennington County Sheriff's Office
 - ☐ Pennington County Highway Department
 - ☐ Pennington County Search & Rescue
 - ☐ State Radio (to notify Highway Patrol and State DOT)

- ☐ Rapid Valley Fire Department
 - ☐ Rapid City Ambulance
 - ☐ Rapid City Police Department
 - ☐ Rapid City Department of Fire and Emergency Services
 - ☐ Rapid City Public Works Department
- ☐ 3. Activate the public warning sirens after conducting the above pages and coordinating warning information with RC-PC Emergency Management.
- ☐ 4. Begin relocation of ESCC to alternate site. If situation develops to Response Level 4 there is insufficient time to relocate.

EMERGENCY MANAGEMENT

- ☐ 1. Inform the following of the Response Level 3 situation:
- ☐ Pennington County Board of Commissioners
 - ☐ Mayor, City of Rapid City
 - ☐ National Weather Service
 - ☐ SD Office of Emergency Management Region IV Coordinator
 - ☐ Black Hills Chapter American Red Cross
 - ☐ Salvation Army
 - ☐ Health and Human Services
 - ☐ Local Utility Companies
 - ☐ Rapid City School District
 - ☐ Rapid Transit
 - ☐ Rapid City Regional Hospital
 - ☐ Sioux San Hospital
- ☐ 2. In conjunction with the sounding of the public warning sirens, activate the Emergency Alert System to inform the population at risk of the need for immediate evacuation. Provide information on evacuation routes and shelter availability and location.
- ☐ 3. Request Red Cross open shelters for those residents evacuating their homes.
- ☐ 4. Activate the Emergency Operations Center at level three as described in the Emergency Operations Plan.
- ☐ 5. Respond to media inquiries, as appropriate.
- ☐ 6. Request assistance from local utilities, as necessary.
- ☐ 7. Inform the School District of the need for multiple shelters, possibly for an extended period of time.

- ☐ 8. Inform Rapid Transit of the need for transportation assistance for evacuees.
- ☐ 9. Implement procedures for liaison with state and federal agencies.
- ☐ 10. Activate missing persons section of EOC, when needed for collection and dissemination of information regarding condition and location of flood victims.
- ☐ 11. Begin relocation to alternate EOC site to ensure continuity of government and leadership if situation develops to Response Level 4.

**PENNINGTON COUNTY BOARD OF COMMISSIONERS
RAPID CITY COMMON COUNCIL
RAPID CITY MAYOR**

- ☐ 1. Coordinate public protection actions with RC-PC Emergency Management.
- ☐ 2. Assure Continuity of Government.
- ☐ 3. Direct a representative to the EOC.
- ☐ 4. Coordinate with emergency response agencies in issuing evacuation orders, public safety information, and situation updates.
- ☐ 5. Prepare a Disaster Declaration, in conjunction with RC-PC Emergency Management, for forwarding to the Governor's Office as the situation dictates.
- ☐ 6. Relocate City and County functions affected by a Response Level 3.
- ☐ 7. Begin relocation of affected City and County facilities. If situation develops to a Response Level 4 there is insufficient time to relocate.

NATIONAL WEATHER SERVICE

- ☐ 1. Issue the Flash Flood Warning for threatened areas after coordination with RC-PC Emergency Management. Disseminate the warning on the NOAA Weather Radio (with tone alarm), Emergency Alert System (EAS), and NOAA Weather Wire Service. Issue public statements as information is received.
- ☐ 2. Provide briefings and other meteorological information to the EOC, Bureau of Reclamation, and other response agencies.

JOHNSON SIDING FIRE DEPARTMENT

- ☐ 1. Establish, or assist in establishing, an Incident Command Post and initial staging area. Report to EOC if/when situation requires.

- ☐ 2. Coordinate evacuation notifications with Incident Command, RC-PC Emergency Management, Pennington County Sheriff's Office, and Pennington County Search and Rescue.
- ☐ 3. Coordinate road and highway closings and traffic management with Pennington County Highway Department, State Department of Transportation, Sheriff's Office, and the SD Highway Patrol.
- ☐ 4. Warn population at risk of the situation and advise them to evacuate immediately. Notification methods can include public address speakers, door-to-door contact, vehicles, and other means to get the information to the population at risk.
- ☐ 5. Provide evacuation route information to evacuees.
- ☐ 6. Provide shelter location and availability information to evacuees as time allows.
- ☐ 7. Move fire apparatus out of possible inundation areas. Fire Department is in known flood area.
- ☐ 8. Assist in any rescue efforts required.
- ☐ 9. Assist in identifying sources of contamination (including sewer) and possible hazardous materials threats.
- ☐ 10. Establish an Evacuation Area Temporary Staging Site for evacuees requiring transportation.
- ☐ 11. Coordinate transportation of evacuees without vehicles with Incident Command, RC-PC Emergency Management, Rapid Transit, and Rapid City Ambulance.

PENNINGTON COUNTY SHERIFF'S OFFICE

- ☐ 1. Establish, or assist in establishing an Incident Command Post. Report to EOC if/when situation requires.
- ☐ 2. Coordinate with Incident Command, Johnson Siding Fire Department, Rapid Valley Fire Department, Rapid City Police Department, Rapid City Department of Fire and Emergency Services, Pennington County Highway, State Department of Transportation, Pennington County Search and Rescue, and SD Highway Patrol on evacuation warning, procedures, routes, and traffic control.
- ☐ 3. Issue an order to evacuate dam failure inundation areas.

- ☐ 4. Identify areas at risk and their necessary evacuation routes.
- ☐ 5. Coordinate with RC-PC Emergency Management on issuing emergency public information.
- ☐ 6. Provide security for evacuated homes as the situation allows.
- ☐ 7. Provide security and crowd control at assembly points and public shelters.
- ☐ 8. Warn population at risk of the situation and advise them to evacuate immediately. Notification methods can include public address speakers, door to door knocking, vehicles, and other means to get the information to the population at risk.
- ☐ 9. Provide evacuation route information to evacuees.
- ☐ 10. Provide shelter location and availability information to evacuees as time allows.
- ☐ 11. Coordinate transportation of evacuees without vehicles with Incident Command, RC-PC Emergency Management, Rapid Transit, and Rapid City Ambulance.
- ☐ 12. Begin relocation of department offices and buildings. If situation develops to Response Level 4 there is insufficient time to relocate. (PSB, County Jail, etc.)

PENNINGTON COUNTY SEARCH AND RESCUE

- ☐ 1. Report to, or assist in establishing an Incident Command Post. Report to EOC if/when situation requires.
- ☐ 2. Coordinate with and assist all other agencies in evacuation warning actions.
- ☐ 3. Remove Search and Rescue apparatus from possible inundation areas. Search and Rescue building is in known flood area.
- ☐ 4. Assist in any rescue efforts required.
- ☐ 5. Establish, or assist in establishing an Evacuation Area Temporary Staging Site for evacuees requiring transportation.
- ☐ 6. Coordinate transportation of evacuees without vehicles with Incident Command, RC-PC Emergency Management, Rapid Transit, and Rapid City Ambulance

- ☐ 7. Use all possible methods available to warn population of the need to evacuate, including vehicles, public address systems, door to door knocking etc.
- ☐ 8. Provide evacuation route information to evacuees.
- ☐ 9. Provide shelter location and availability information to evacuees as time allows.

RAPID VALLEY FIRE DEPARTMENT

- ☐ 1. Report to, or assist in establishing an Incident Command Post. Report to EOC if/when situation requires.
- ☐ 2. Coordinate evacuation notification actions with Incident Command and all other agencies involved.
- ☐ 3. Identify areas at risk and their necessary evacuation routes.
- ☐ 4. Remove fire apparatus from possible inundation areas.
- ☐ 5. Establish, or assist in establishing an Evacuation Area Temporary Staging Site for evacuees requiring transportation.
- ☐ 6. Coordinate transportation of evacuees without vehicles with Incident Command, RC-PC Emergency Management, Rapid Transit, and Rapid City Ambulance
- ☐ 7. Use all possible methods available to warn population of the need to evacuate, including vehicles, public address systems, door to door knocking etc.
- ☐ 8. Provide evacuation route information to evacuees.
- ☐ 9. Provide shelter availability and location to evacuees as time allows.

PENNINGTON COUNTY HIGHWAY DEPARTMENT

- ☐ 1. Report to the Incident Command Post when requested. Report to EOC if/when situation requires.
- ☐ 2. Coordinate with other emergency response agencies in conducting road and highway closures for the evacuation.
- ☐ 3. Remove County Highway apparatus from inundation areas.
- ☐ 4. Coordinate and provide assistance with debris clearance, emergency repair, and construction, when necessary.

- ☐ 5. Implement liaison procedures to ensure proper coordination with state, federal, and private public works and construction resources.
- ☐ 6. Provide technical support where needed.
- ☐ 7. Coordinate related public information releases with the EOC.
- ☐ 8. Begin relocation of equipment, affected department offices, and buildings. If situation develops to Response Level 4 there is insufficient time to relocate.

SOUTH DAKOTA STATE RADIO

- ☐ Notify SD Highway Patrol and SD Department of Transportation of evacuation of affected areas.

SOUTH DAKOTA HIGHWAY PATROL

- ☐ Coordinate with the Incident Command Post on road and highway closures, and traffic control.

SOUTH DAKOTA DEPARTMENT OF TRANSPORTATION

- ☐ 1. Coordinate with Incident Command and other agencies in closing roads and highways.
- ☐ 2. Assist with debris clearance, emergency repair, and construction when necessary.

RAPID CITY AMBULANCE

RAPID CITY DEPARTMENT OF FIRE & EMERGENCY SERVICES

- ☐ 1. Coordinate with Incident Command for transporting residents requiring medical assistance. Report to EOC if/when situation requires.
- ☐ 2. Assist with warning, and transport those residents requiring medical assistance to safe areas.
- ☐ 3. Relocate Rapid City ambulance vehicles, medical supplies, equipment, and essential resources from potential inundation areas.
- ☐ 4. Coordinate with local hospitals and nursing homes to possibly receive evacuees requiring medical or long term type of care.
- ☐ 5. Activate a casualty collection/triage point on high ground, if needed.

- ☐ 6. Provide field medical care when needed.
- ☐ 7. Coordinate with local hospitals and the County Coroner for temporary morgue sites, if needed.

RAPID CITY PUBLIC WORKS

- ☐ 1. Assist with debris clearance, emergency repair, and construction when necessary.
- ☐ 2. Assist with road closings and evacuation routes.
- ☐ 3. Report to EOC if/when situation requires.
- ☐ 4. Provide technical public works support where needed.
- ☐ 5. Coordinate related public information releases with the EOC.
- ☐ 6. Initiate actions to prevent potential sewage backup caused by flood waters.
- ☐ 7. Coordinate preventive actions with sewage treatment plant to avoid effluent releases.
- ☐ 8. Begin relocation of affected equipment, department offices, and buildings. If situation develops to Response Level 4 there is insufficient time to relocate.

RAPID CITY POLICE DEPARTMENT

- ☐ 1. Issue an order to evacuate dam failure inundation areas.
- ☐ 2. Coordinate with RC-PC Emergency Management on issuing emergency public information.
- ☐ 3. In coordination with RC-PC Emergency Management determine areas of inundation that require evacuation.
- ☐ 4. Identify evacuation routes.
- ☐ 5. Warn population at risk of the situation and advise them to evacuate immediately. Notification methods can include public address speakers, door to door knocking, vehicles, and other means to get the information to the population at risk.
- ☐ 6. Provide evacuation route information to evacuees.

- ☐ 7. Provide shelter availability and location to evacuees as time allows.
- ☐ 8. Coordinate transportation of evacuees without vehicles with Incident Command, RC-PC Emergency Management, Rapid Transit, and Rapid City Ambulance.
- ☐ 9. Provide security for evacuated homes as the situation allows.
- ☐ 10. Provide security and crowd control at assembly points and public shelters.
- ☐ 11. Report to EOC if/when situation requires.
- ☐ 12. Begin relocation of vehicles, affected department offices, and buildings. If situation develops to Response Level 4 there is insufficient time to relocate. (PSB etc.)

RAPID CITY DEPARTMENT OF FIRE AND EMERGENCY SERVICES

- ☐ 1. Coordinate evacuation notification actions with Incident Command and all other agencies involved.
- ☐ 2. Warn population at risk of the situation and advise them to evacuate immediately. Notification methods can include public address speakers, door to door knocking, vehicles, and other means to get the information to the population at risk.
- ☐ 3. Provide evacuation route information to evacuees.
- ☐ 4. Provide shelter location and availability information to evacuees as time allows.
- ☐ 5. Establish, or assist in establishing an Evacuation Area Temporary Staging Site for evacuees requiring transportation.
- ☐ 6. Coordinate transportation of evacuees without vehicles with Incident Command, RC-PC Emergency Management, Rapid Transit, and Rapid City Ambulance.
- ☐ 7. Move fire apparatus out of possible inundation areas.
- ☐ 8. Assist in rescue efforts when possible.
- ☐ 9. Assist in identifying sources of contamination and possible hazardous materials threats.

SOUTH DAKOTA OFFICE OF EMERGENCY MANAGEMENT

- ☐ 1. Assist RC-PC Emergency Management upon request and as necessary.
- ☐ 2. Coordinate with National Guard and State agencies for augmentation of manpower and resources.
- ☐ 3. Notify the SD Dam Safety Engineer's office of the incident.
- ☐ 4. Notify Governor's Office of threat to downstream populations.
- ☐ 5. Activate State EOC, if warranted.

AMERICAN RED CROSS SALVATION ARMY

- ☐ 1. Coordinate with RC-PC Emergency Management regarding the need for shelters.
- ☐ 2. Coordinate response efforts to ensure resources are effectively utilized and services are not unnecessarily duplicated.
- ☐ 3. Review availability of food and potable water sources.

HEALTH AND HUMAN SERVICES

- ☐ 1. Report to EOC if/when situation requires.
- ☐ 2. Coordinate with Red Cross and Salvation Army on establishing and stocking shelters.
- ☐ 3. Contact school superintendents regarding use of school facilities for shelters.
- ☐ 4. Coordinate with medical personnel, hospitals, and nursing care facilities on patient relocation and receiving evacuees.
- ☐ 5. Contact Pennington County Humane Society for temporary housing of shelteree's pets.
- ☐ 6. Coordinate with RC-PC Emergency Management or EOC Public Information Officer on news releases regarding shelter availability.
- ☐ 7. Locate potable water sources and relocate to areas of need.
- ☐ 8. Implement and coordinate procedures for removal of dead or injured animals.

- ☐ 9. Coordinate measures to control communicable diseases.
- ☐ 10. Implement and coordinate crisis counseling procedures and resources.

PACTOLA DAM RESPONSE LEVEL 4 ACTIONS

Response Level 4 means that populations at risk and emergency response personnel are in **imminent danger** and should leave the inundation area **immediately!** Response Level 4 indicates that the dam has failed. Immediate evacuation must take place. Life-threatening floodwaters will affect populations at risk and emergency response personnel.

At Response Level 4, evacuation actions must be terminated and emergency personnel ordered to leave the inundation areas.

Populations at **immediate** risk are those living along Highway 44 West, Dark Canyon, and large sections of Rapid City and Rapid Valley. Also at risk are populations at Caputa, Farmingdale and Wasta.

EXPECTED ACTIONS

US BUREAU OF RECLAMATION PACTOLA DAM TENDER RAPID CITY PUBLIC WORKS

- ☐ 1. Notify Pennington County warning point, Emergency Services Communications Center at (605) 394-4139 or (605) 394-2151. Inform them of the Response Level 4 and of immediate evacuation requirements of populations at risk and emergency response personnel.
- ☐ 2. Notify RC-PC Emergency Management of Response Level 4 situation.

EMERGENCY SERVICES COMMUNICATIONS CENTER

If ESCC has not been relocated: Time is limited. Activate public warning sirens and conduct appropriate pages to notify emergency response personnel to evacuate inundation areas immediately. Relocate ESCC to an alternate location away from inundation areas.

From alternate site:

- ☐ Perform other actions listed in Response Level 3 as time allows.

EMERGENCY MANAGEMENT

- ☐ 1. If not already accomplished, relocate EOC to alternate site.
- ☐ 2. Perform other actions listed in Response Level 3 as time allows.

**PENNINGTON COUNTY BOARD OF COMMISSIONERS
RAPID CITY COMMON COUNCIL
RAPID CITY MAYOR**

- ☐ 1. Assure Continuity of Government.
- ☐ 2. Perform other actions listed in Response Level 3 as time allows.

NATIONAL WEATHER SERVICE

- ☐ 1. Issue the Flash Flood Warning for downstream areas after coordination with RC-PC Emergency Management. Disseminate the warning on the NOAA Weather Radio (with tone alarm), Emergency Alert System (EAS), and NOAA Weather Wire Service. Issue public statements as information is received.
- ☐ 2. Provide briefings and other meteorological information to the EOC, Bureau of Reclamation, and other response agencies.

JOHNSON SIDING FIRE DEPARTMENT

- ☐ 1. Move fire apparatus and personnel out of possible inundation areas.
- ☐ 2. Perform other actions listed in Response Level 3 as time and safety allows.
- ☐ 3. Prepare for rescue and recovery operations.

PENNINGTON COUNTY SHERIFF'S OFFICE

- ☐ 1. Order all response personnel to evacuate dam failure inundation areas.
- ☐ 2. Perform other actions listed in Response Level 3 as time and safety allows.
- ☐ 3. Prepare for rescue and recovery operations.

PENNINGTON COUNTY SEARCH AND RESCUE

- ☐ 1. Remove Search and Rescue apparatus and personnel from dam failure inundation areas.
- ☐ 2. Perform other actions listed in Response Level 3 as time and safety allows.
- ☐ 3. Prepare for rescue and recovery operations.

RAPID VALLEY FIRE DEPARTMENT

- ☐ 1. Move fire apparatus and personnel out of possible inundation areas.
- ☐ 2. Perform other actions listed in Response Level 3 as time and safety allows.
- ☐ 3. Prepare for rescue and recovery operations.

PENNINGTON COUNTY HIGHWAY DEPARTMENT

- ☐ 1. Move equipment and personnel out of possible inundation areas.
- ☐ 2. Perform other actions listed in Response Level 3 as time and safety allows.
- ☐ 3. Prepare for rescue and recovery operations.

SOUTH DAKOTA STATE RADIO

- ☐ Prepare for rescue and recovery operations.

SOUTH DAKOTA HIGHWAY PATROL

- ☐ 1. Move equipment and personnel out of possible inundation areas.
- ☐ 2. Perform other actions listed in Response Level 3 as time and safety allows.
- ☐ 3. Prepare for rescue and recovery operations.

SOUTH DAKOTA DEPARTMENT OF TRANSPORTATION

- ☐ 1. Move equipment and personnel out of possible inundation areas.
- ☐ 2. Perform other actions listed in Response Level 3 as time and safety allows.
- ☐ 3. Prepare for rescue and recovery operations.

RAPID CITY AMBULANCE

RAPID CITY DEPARTMENT OF FIRE AND EMERGENCY SERVICES

- ☐ 1. Move equipment and personnel out of possible inundation areas.
- ☐ 2. Perform other actions listed in Response Level 3 as time and safety allows.
- ☐ 3. Prepare for rescue and recovery operations.

RAPID CITY PUBLIC WORKS

- ☐ 1. Move equipment and personnel out of possible inundation areas.
- ☐ 2. Perform other actions listed in Response Level 3 as time and safety allows.
- ☐ 3. Prepare for rescue and recovery operations.

RAPID CITY POLICE DEPARTMENT

- ☐ 1. Move equipment and personnel out of possible inundation areas.
- ☐ 2. Perform other actions listed in Response Level 3 as time and safety allows.
- ☐ 3. Prepare for rescue and recovery operations.

RAPID CITY DEPARTMENT OF FIRE AND EMERGENCY SERVICES

- ☐ 1. Move equipment and personnel out of possible inundation areas.
- ☐ 2. Perform other actions listed in Response Level 3 as time and safety allows.
- ☐ 3. Prepare for rescue and recovery operations.

SOUTH DAKOTA OFFICE OF EMERGENCY MANAGEMENT

- ☐ 1. Activate National Guard and State agencies for augmentation of manpower and resources for rescue and recovery operations.
- ☐ 2. Implement damage assessment and recovery procedures upon request from local jurisdiction or from the Governor.
- ☐ 3. Prepare Governor's emergency/disaster declaration, if needed.
- ☐ 4. Notify Federal Emergency Management Agency and implement procedures for possible Presidential Declaration upon Pennington County request.

AMERICAN RED CROSS SALVATION ARMY

- ☐ 1. Implement actions to provide mass shelter facilities
- ☐ 2. Assist with damage assessment.
- ☐ 3. Perform other actions listed in Response Level 3 as time and safety allows.

HEALTH AND HUMAN SERVICES

- ☐ 1. Coordinate actions necessary to provide long term shelter for displaced citizens.
- ☐ 2. Arrange for necessary health provisions regarding immunizations, potable water, etc.
- ☐ 3. Perform other actions listed in Response Level 3 as time and safety allows.

**SUGGESTED EVACUATION RESPONSIBILITIES - RESPONSE LEVELS 3 AND 4
REFER TO ACCOMPANYING INUNDATION MAPS**

**PENNINGTON COUNTY SHERIFF'S OFFICE
JOHNSON SIDING FIRE DEPARTMENT**

All residents located near the stream between Deerfield and Pactola Dam
All residents living along Rapid Creek on Highway 44 West
Hisega Area
Thunderhead Falls Road Area
Dark Canyon Area
Nameless Cave Road Area
Red Rock Canyon Area

**RAPID CITY POLICE DEPARTMENT
RAPID CITY DEPARTMENT OF FIRE & EMERGENCY SERVICES**

Chapel Valley Area
Jackson Blvd to Canyon Lake Dr to Baken Park/Mt View Area
Between Mt View & Jackson - W Fulton St, Valentine, Shaver, Warren Dr Areas
Harter Dr, Dakota Dr, Plum Tree Ln, Clowers St, and Piedmont St Areas
West Main St at Sheffer Dr and east through the Gap Area
Gap Area south of Omaha St to Halley Park
Omaha St north side - Packing Plant Area, east to Boy's Club Area
Prairie Market Area east to LaCrosse St
Downtown - Omaha south to Quincy St and east to SDSMT
East St Patrick St from Hawthorne east to S Valley Dr
Highway 79 east to S Valley Dr

RAPID VALLEY FIRE DEPARTMENT

S Valley Dr south to Fairmont east to Caputa Area
Both sides of Highway 44 East (See Map)

NEW UNDERWOOD FIRE DEPARTMENT

Farmingdale Area

WASTA FIRE DEPARTMENT

Wasta Area

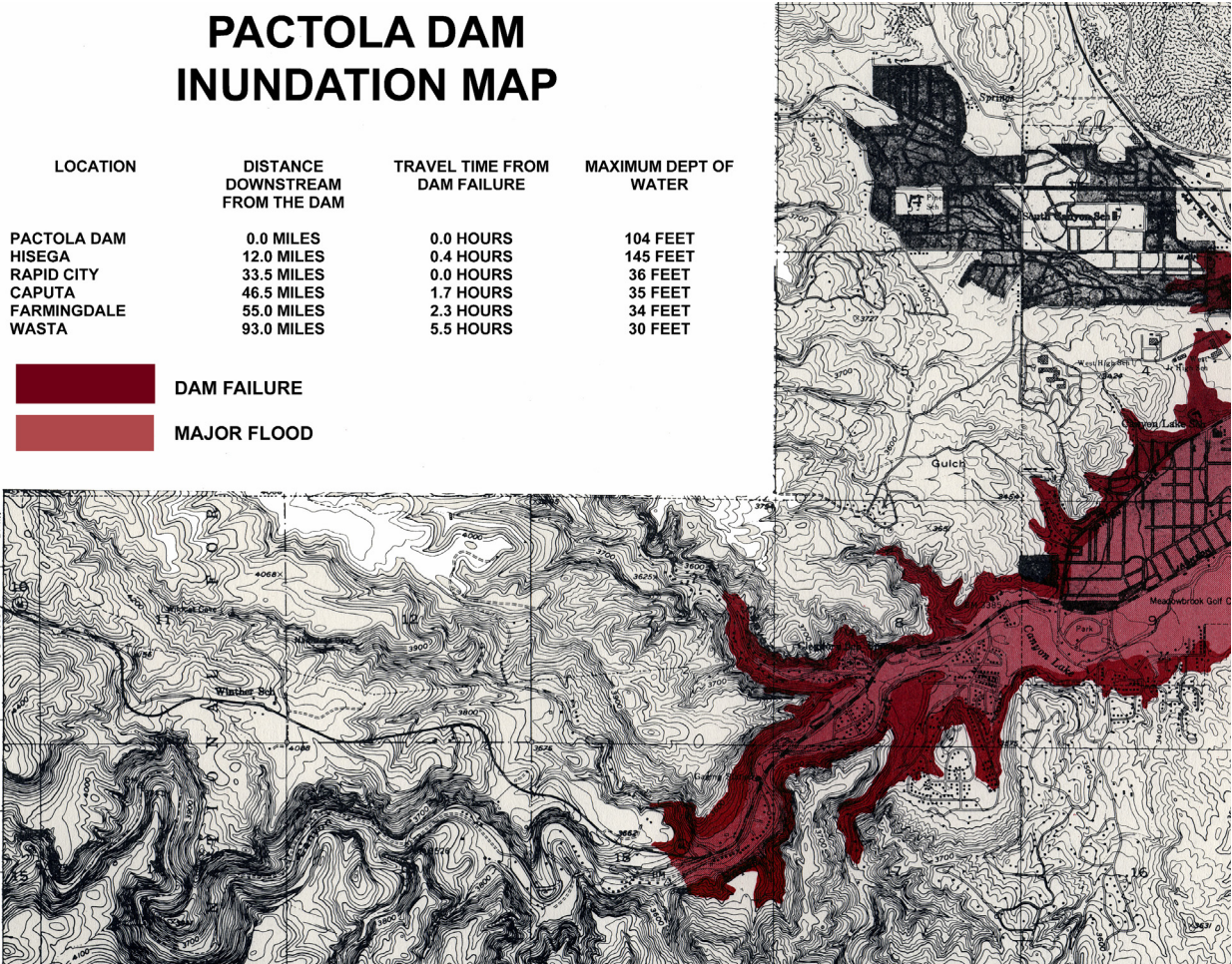
RAPID CITY AREA INUNDATION MAP PANEL 1

PACTOLA DAM
INUNDATION MAP

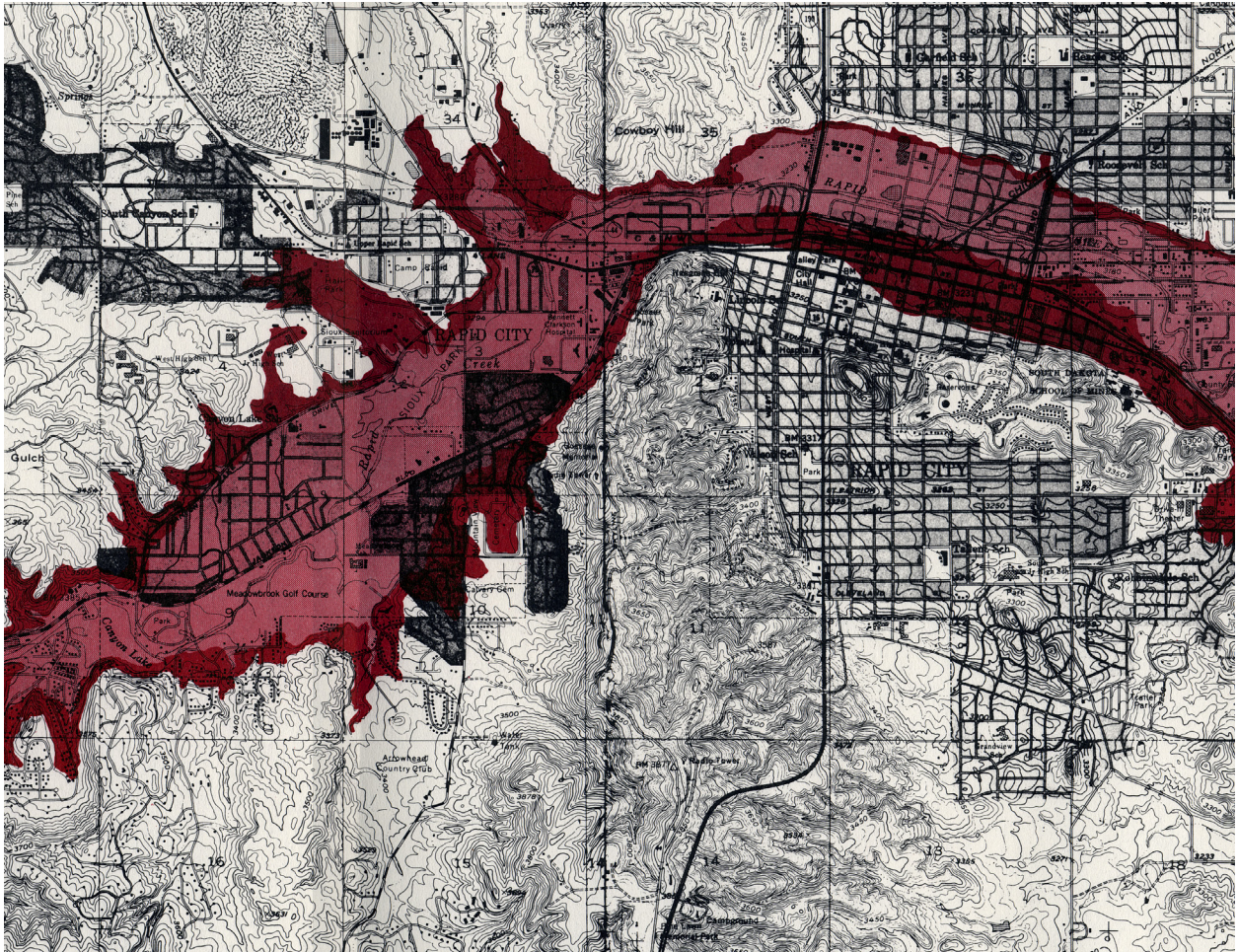
LOCATION	DISTANCE DOWNSTREAM FROM THE DAM	TRAVEL TIME FROM DAM FAILURE	MAXIMUM DEPT OF WATER
PACTOLA DAM	0.0 MILES	0.0 HOURS	104 FEET
HISEGA	12.0 MILES	0.4 HOURS	145 FEET
RAPID CITY	33.5 MILES	0.0 HOURS	36 FEET
CAPUTA	46.5 MILES	1.7 HOURS	35 FEET
FARMINGDALE	55.0 MILES	2.3 HOURS	34 FEET
WASTA	93.0 MILES	5.5 HOURS	30 FEET

DAM FAILURE

MAJOR FLOOD



RAPID CITY AREA INUNDATION MAP PANEL 2



RAPID CITY AREA INUNDATION MAP PANEL 3

