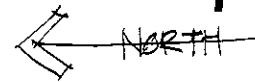


PROJECT INFORMATION :

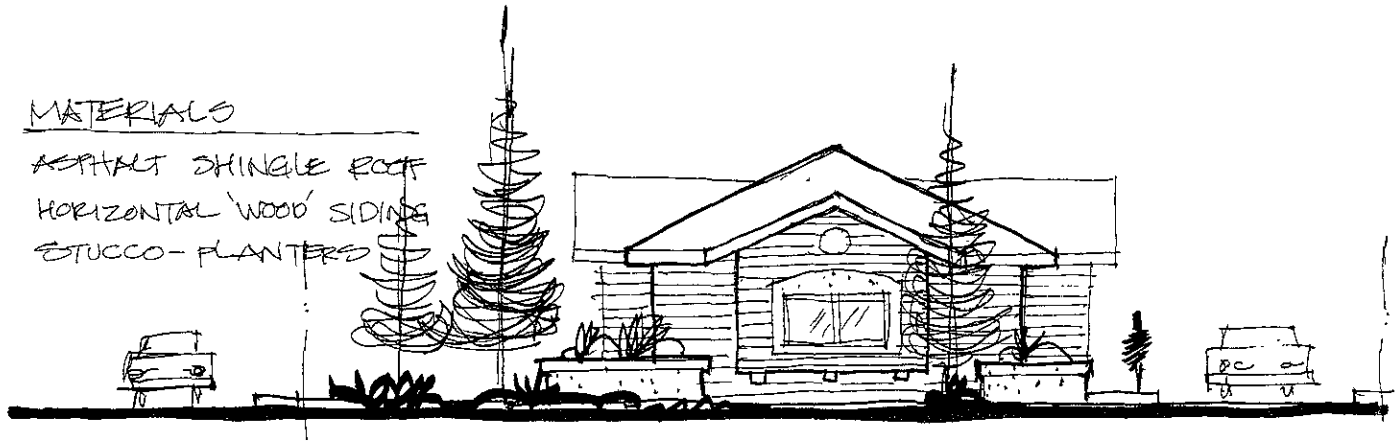
LOT AREA: 20,619 S.F.  
 BUILDING AREA: 3000 SF  
 PARKING REQUIRED: 15 CARS  
 PARKING SUPPLIED: 18 CARS

SITE DEVELOPMENT PLAN :

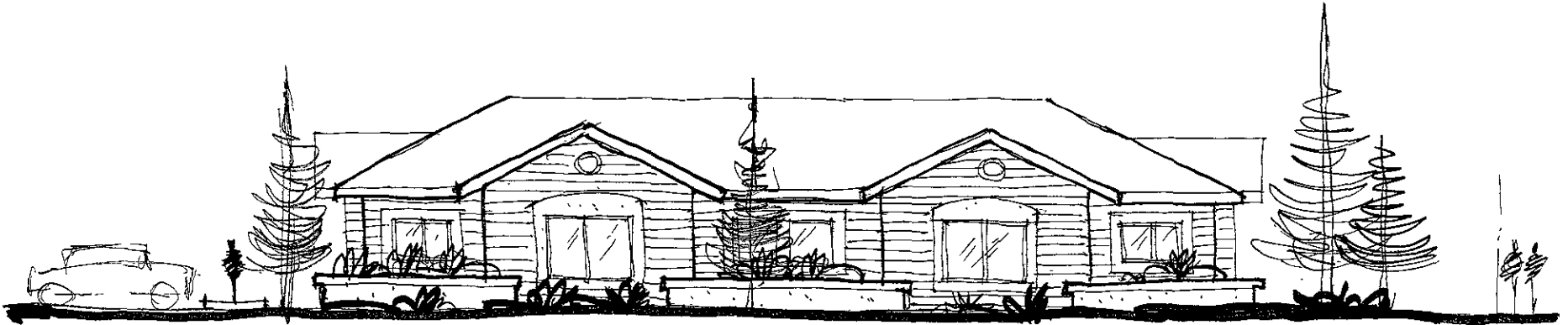


MATERIALS

- ASPHALT SHINGLE ROOF
- HORIZONTAL 'WOOD' SIDING
- STUCCO-PLANTERS



CANYON LAKE DRIVE



HARTER DRIVE

TSP, Inc  
600 Kansas City Street  
Rapid City, SD 57701

phone (605) 343-6102  
fax (605) 343-7159



SEPTEMBER 22, 2005